

Monthly Report on Short-term Transactions of Electricity in India

December 2024



Economics Division
Central Electricity Regulatory Commission
6th, 7th & 8th Floors, Tower B, World Trade Centre
Nauroji Nagar, New Delhi- 110029



Contents

S.No.	Contents	Page No
	Contents	i
	List of Tables	ii
	List of Figures	iii
	Abbreviations	iv
1	Introduction	1
2	Volume of Short-term Transactions of Electricity and DSM	1
3	Price of Short-term Transactions of Electricity and DSM Charges	4
3.1	<i>Price of electricity transacted through Traders</i>	4
3.2	<i>Price of electricity transacted through Power Exchanges</i>	4
3.3	<i>DSM Charges</i>	4
4	Trading Margin	5
5	Volume of Short-term Transactions of Electricity (Regional Entity-wise)	5
6	Congestion on Inter-State Transmission Corridor for Day-Ahead Market and Real-Time Market on Power Exchanges	6
7	Volume and Price of Renewable Energy Certificates (RECs)	7
8	Inferences	8

S.No.	List of Tables	Page No.
Table-1	Volume of Short-term Transactions of Electricity and DSM (All India)	10
Table-2	Percentage Share of Electricity Transacted by Trading Licensees	12
Table-3	Price of Electricity Transacted through Traders	13
Table-4	Price of Electricity Transacted through Traders (Time-wise)	13
Table-5	Price of Electricity Transacted in Day Ahead Market	13
Table-6	Price of Electricity Transacted in Green Day Ahead Market	13
Table-7	Price of Electricity Transacted in High Price Day Ahead Market	13
Table-8	Price of Electricity Transacted in Real Time Market	13
Table-9	Volume and Price of Electricity in Term Ahead Market of IEX	13
Table-10	Volume and Price of Electricity in Term Ahead Market of PXIL	14
Table-11	Volume and Price of Electricity in Term Ahead Market of HPX	14
Table-12	Volume and Price of Electricity in Green Term Ahead Market of IEX	14
Table-13	Volume and Price of Electricity in Green Term Ahead Market of PXIL	14
Table-14	Volume and Price of Electricity in Green Term Ahead Market of HPX	14
Table-15	Volume and Price of Electricity in High Price Term Ahead Market of IEX	14
Table-16	Volume and Price of Electricity in High Price Term Ahead Market of PXIL	14
Table-17	Volume and Price of Electricity in High Price Term Ahead Market of HPX	14
Table-18	Volume of Electricity Sold through Bilateral	16
Table-19	Volume of Electricity Purchased through Bilateral	18
Table-20	Volume of Electricity Sold in Day Ahead Market through Power Exchanges	19
Table-21	Volume of Electricity Purchased in Day Ahead Market through Power Exchanges	23
Table-22	Volume of Electricity Sold in Green Day Ahead Market through Power Exchanges	24
Table-23	Volume of Electricity Purchased in Green Day Ahead Market through Power Exchanges	26
Table-24	Volume of Electricity Sold in High Price Day Ahead Market through Power Exchanges	27
Table-25	Volume of Electricity Purchased in High Price Day Ahead Market through Power Exchanges	27
Table-26	Volume of Electricity Sold in Real Time Market through Power Exchanges	28
Table-27	Volume of Electricity Purchased in Real Time Market through Power Exchanges	32
Table-28	Total Volume of Net Transactions through Power Exchanges (Regional Entity-wise)	34
Table-29	Details of Congestion in Power Exchanges	38
Table-30	Volume of Transactions through Power Exchanges (Day-wise)	39
Table-31(a)	Price of Day Ahead Transactions of Electricity (Day-Wise)	40
Table-31(b)	Price of Green Day Ahead Transactions of Electricity (Day-Wise)	41
Table-31(c)	Price of Real Time Transactions of Electricity (Day-Wise)	42
Table-31(d)	Price of High Price Day Ahead Transactions of Electricity (Day-Wise)	43
Table-32	Volume of Transactions through Power Exchanges (Regional Entity-wise)	44
Table-33	Volume and Charges under DSM (Day wise)	48
Table-34	Volume of Electricity Under drawal/ Over Injection (Exported) under DSM	49
Table-35	Volume of Electricity Over drawal/ Under Injection (Imported) under DSM	55
Table-36	Volume and Price of Renewable Energy Certificates (RECs) transacted through Power Exchanges and through Traders (Bilateral)	61
Table-37(a)	Volume and Price of Cross Border Trade through Day Ahead Market at IEX	61
Table-37(b)	Volume and Price of Cross Border Trade through Real Time Market at IEX	61

S. No.	List of Figures	Page No.
Figure-1	Volume of various kinds of Electricity Transactions in Total Electricity Generation	10
Figure-2	Volume of Short-term Transactions of Electricity and DSM Volume	10
Figure-3	Volume transacted in different markets segments on Power Exchanges	11
Figure-4	Volume of transactions on Power Exchange and DSM Volume (Day-wise)	11
Figure-5	Percentage Share of Electricity Transacted by Trading Licensees	12
Figure-6	Weighted Average Price of Short-term Transactions of Electricity	15
Figure-7	Weighted Average Price of Short-term Transactions of Electricity (Day-wise)	15

Abbreviations

Abbreviation	Expanded Version
ABSP_ANTP	Acme Bhiwadi Solar Power Private Limited, Anantpur
ACBIL	ACB (India) Limited
ACP	Area Clearing Price
ACV	Area Clearing Volume
ACME_SLR	ACME Solar Power Project
ACME_RUMS	Acme Rewa Ultra Mega Solar Project
ADANI_4RE	Adani Renewable Energy Holding Four Limited
ADANI GREEN	Adani Green Energy Limited
ADANIHB_SLR	Adani Hybrid Energy Jaisalmer One Limited (Solar)
ADANI_SLR 4	Adani Solar Energy Four Private Limited
ADANIHB_WIND	Adani Hybrid Energy Jaisalmer One Limited (Wind)
ADEPT	Adept Renewable Technologies Private Limited
ADY1_PVGD	Adyah Solar Energy Pvt Ltd., Block 1 Pavagada Solar Park
ADY2_PVGD	Adyah Solar Energy Pvt Ltd., Block 2 Pavagada Solar Park
ADY3_PVGD	Adyah Solar Energy Pvt Ltd., Block 3 Pavagada Solar Park
ADY6_PVGD	Adyah Solar Energy Pvt Ltd., Block 6 Pavagada Solar Park
ADY10_PVGD	Adyah Solar Energy Pvt Ltd., Block 10 Pavagada Solar Park
ADY13_PVGD	Adyah Solar Energy Pvt Ltd., Block 13 Pavagada Solar Park
AGEMPL BHUJ	Adani Green Energy (MP) Ltd.,Bhuj
AHEJOL_S_FTG2	Adani Hybrid Energy Jaisalmer One Limited (SOLAR)
AHEJOL_W_FTG2	Adani Hybrid Energy Jaisalmer One Limited (WIND)
AHEJ2L_SOLAR	Adani Hybrid Energy Jaisalmer Two Limited (Solar)
AHEJ3L_SOLAR	Adani Hybrid Energy Jaisalmer Three Limited (Solar)
AHEJ4L_SOLAR	Adani Hybrid Energy Jaisalmer Four Limited-Hybrid Solar
AHEJ4L_WIND	Adani Hybrid Energy Jaisalmer Four Limited-Hybrid Wind
AHSP_ANTP	Acme Hisar Solar Power Private Limited,Anantpur
AKS_PVGD	ACME Kurukshetra Solar Energy Pvt. Ltd
AKSP_ANTP	Acme Karnal Solar Power Private Limited,Anantpur
ALFANAR_BHUJ	Alfanar Group Wind Project, Bhuj, Gujarat
ALTRA XERGI	Altra Xergi Power Private Limited
AMP_GREEN6	Amp Energy Green Six Private Limited
AMPLUS_AGES	Amplus Ages Private Limited
AMPS Hazira	Arcelor Mittal Nippon Steel, Hazira
APTEL	Appellate Tribunal for Electricity
ARERJL_SLR	Adani Renewable Energy Park Rajasthan Ltd.
ARINSUM_RUMS	Solenergi RewaUltraMega Solar Project
ARS_PVGD	ACME REWARI Solar Power Pvt Ltd.
ARTPP	Adani Power Limited - Raipur TPP
ASEJTL_SLR	Adani Solar Energy Jodhpur Two Ltd.
AVAADA1_PVGD	Avaada Solar Energy Private Ltd., Pavagada Project 1
AVAADA2_PVGD	Avaada Solar Energy Private Ltd., Pavagada Project 2
AVADARJHN_SLR	Avaada Rjhn Private Limited_Solar
AYANA_NPKUNTA	Ayana Power, NP Kunta
AZURE_ANTP	Azure Power,Anantpur
AZURE_PVGD	Azure Power,Pavagada
AZURE_SLR	Azure Power Solar Power Project
AZURE34_SLR	Azure Power 34 Pvt. Ltd. Solar Power Project
AZURE43_SLR	Azure Power Forty Three Private Limited
BALCO	Bharat Aluminum Company Limited
BARC	Bhabha Atomic Research Centre
BASOCHHU HEP	Basochhu Hydropower Plant Bhutan
BBMB	Bhakra Beas Management Board

BETAM_TCN	Betam Wind Energy Private Limited, Tuticorin
BHADRAVATHI HVDC	Bhadravathi High Voltage Direct Current Link
BRBCL	Bhartiya Rail Bijlee Company Limited
CEA	Central Electricity Authority
CERC	Central Electricity Regulatory Commission
CGPL	Coastal Gujarat Power Limited
CHUKHA HEP	Chhukha Hydroelectric Project, Bhutan
CHUZACHEN HEP	Chuzachen Hydro Electric Power Project
CLEAN_SLR	Clean Solar Power Pvt. Ltd
CLEANSPL_SLR	Clean Solar Jodhpur Pvt Ltd
COASTGEN	Coastal Energen Private Limited
DAGACHU	Dagachhu Hydro Power Corporation
DAM	Day Ahead Market
DEVKOOT_SLR	Devkoot Solar Power Plant, NTPC Green Energy Ltd.
DCPP	Donga Mahua Captive Power Plant
DD&DNH	Daman and Diu & Dadar Nagar Haveli
DGEN MEGA POWER	DGEN Mega Power Project
DGPCL Bhutan	Druk Green Power Corporation Ltd., Bhutan
DHARIWAL POWER	Dhariwal Power Station
DIKCHU HEP	Dikchu Hydro-electric Project, Sikkim
DOYANG HEP	DoyangHydro Electric Project
DSM	Deviation Settlement Mechanism
DVC	Damodar Valley Corporation
EDEN_SLR	Eden RE Cite Private limited
EMCO	EMCO Energy Limited
ESPL_RADHANESDA	Electro Solaire Private Limited, Radhanesda
ESSAR POWER	Essar Power Limited
FORTUM1_PVGD	Fortum Finnsurya Energy Private Ltd, Pavagada Project 1
FORTUM2_PVGD	Fortum Finnsurya Energy Private Ltd, Pavagada Project 2
FRV_ANTP	Fotowatio Renewable Ventures, Anantapur
FRV_NPK	Fotowatio Renewable Ventures, NP Kunta
GIPCL_RADHANESDA	Gujarat Industries Power Company Ltd, Radhanesda
GIWEL_BHUJ	Green infra wind energy Limited, Bhuj
GIWEL_TCN	Green Infra Wind Energy Limited, Tuticorin
GMR CHHATTISGARH	GMR Chhattisgarh Energy Limited
GMR KAMALANGA	GMR Kamalanga Energy Ltd.
G-DAM	Green Day Ahead Market
GRIAN	Grian Energy Private Limited
GSECL P-II	GSECL Raghnesda Solar Park (Phase-II)
G-TAM	Green Term Ahead Market
HPX	Hindustan Power Exchange Limited
HP-DAM	High Price Day Ahead Market
HP-TAM	High Price Term Ahead Market
HVDC ALPD	Alipurduar High Voltage Direct Current Link
HVDC CHAMPA	Champa-Kurukshetra High Voltage Direct Current Link
HVDC PUS	Pasauli High Voltage Direct Current Link
HVDC RAIGARH	Raigarh-Pugalur High Voltage Direct Current Link
IBEUL	Ind Bharat Energy Utkal Limited
IEX	Indian Energy Exchange Limited
IGSTPS	Indira Gandhi Super Thermal Power Station Jhajjar
IL&FS	Infrastructure Leasing & Financial Services Limited
INOX_BHUJ	INOX Wind Limited, Bhuj, Gujarat
J&K	Jammu & Kashmir
JAYPEE NIGRIE	Jaypee Nigrie Super Thermal Power Project

JHABUA POWER MP	Jhabua Thermal Power Project
JINDAL POWER	Jindal Power Limited
JINDAL STAGE-II	Jindal Power Ltd Stage II
JITPL	Jindal India Thermal Power Ltd.
JORETHANG	Jorethang Loop Hydroelectric Power Project
JSW_RENEW_2	JSW Renew Energy Two Limited
KAPP 3&4	Kakrapar Atomic Power Station Unit 3 & 4
KARCHAM WANGTOO	Karcham Wangtoo H.E. Project
KBUNL	Kanti Bijlee Utpadan Nigam Limited
KHURJA STPP	Khurja Super Thermal Power Plant
KORBA WEST POWER	Korba West Power Company Limited
KOTESHWAR	Koteshwar Hydro Power project
KREDL_PVGD	Karnataka Renewable Energy Development Ltd,Pavagada
KSK MAHANADI	KSK Mahanadi Power Ltd
KSMPL_SLR	Kilaj Solar (Maharashtra) Private Limited
KURICHU HEP	Kurichhu Hydro-electric Power Station, Bhutan
LANKO_AMK	LancoAmarkantak Power Private Limited
LANKO BUDHIL	LancoBudhil Hydro Power Private Limited
LANKOKONDAPALLY	Lanco Kondapally Power Private Limited
LOKTAK	Loktak Power Project
MAHINDRA_RUMS	Mahindra Rewa Ultra Mega Solar Project
MAHOBASLR	Mahoba Solar Power Project
MALANA	Malana Hydroelectric Plant
MANGDECHU HEP	Mangdechhu Hydroelectric Project, Mangdechhu River, Bhutan
Maruti Coal	Maruti Clean Coal and Power Limited
MB POWER	MB Power Ltd
MEENAKSHI	Meenakshi Energy Private Limited
MRPL	Mahindra Renewables Private Limited
MSEPL	Masaya Solar Energy Private Limited
MSRPL	Mega Solis Renewables Pvt. Ltd.
MTPS	TATA Power Mundra Thermal Power Station
MTPS II	Muzaffarpur Thermal Power Station – Stage II
MYTRAH_TCN	Mytrah Energy (India) Private Limited,Tuticorin
MU	Million Units
NAPP	Narora Atomic Power Plant
NCR ALLAHABAD	North Central Railway, Allahabad
NEEPCO	North Eastern Electric Power Corporation Limited
NEP	Nepal
NFL	National Fertilisers Limited
NHPC STATIONS	National Hydro Electric Power Corporation Ltd. Stations
NJPC	Nathpa Jhakri Hydroelectric Power Station
NLC	Neyveli Lignite Corporation Limited
NLDC	National Load Dispatch Centre
NOKHRA_STPP	Nokhra Solar Power Plant, NTPC Green Energy Ltd.
NPGC	Nabinagar Power Generating Company (Pvt.) Limited
NREL_DAYAPAR (W)	NREL-Dayapar Wind
NSPCL	NTPC - SAIL Power Company Private Limited
NTECLVallur	NTPC Tamil Nadu Energy Company Limited Vallur
NTPC_ANTP	NTPC Anantapur
NTPC STATIONS	National Thermal Power Corporation Ltd. Stations
NTPL	NLC Tamil Nadu Power Limited
NVVN	NTPC Vidyut Vyapar Nigam Limited
OCF	Order Carry Forward
ONEVOLT	Onevolt Energy Private Limited

ONGC Platana	ONGC Tripura Power Company
OPGC	Odisha Power Generation Corporation
ORANGE_TCN	Orange Renewable Power Pvt. Ltd,Tuticorin
OSTRO	Ostro Energy Private Limited
OTC	Over The Counter
PARAM_PVGD	Parampujya Solar Energy Private Ltd
PARE HEP	Pare hydroelectric project, Arunachal Pradesh
PXIL	Power Exchange India Limited
RAMPUR HEP	Rampur Hydro Electric Power Project
RANGIT HEP	Rangit Hydroelectric power project
RANGANADI HEP	Ranganadi Hydro Electric Power Project, Arunachal Pradesh
RAP-B	Rajasthan Atomic Power Plant-B
RAP-C	Rajasthan Atomic Power Plant-C
RAPP 7&8	Rajasthan Atomic Project 7&8
REC	Renewable Energy Certificate
REGL	Raigarh Energy Generation Limited
RENEW_BHACHAU	ReNew Power Limited, Bhachau
RENEW_BHUI	ReNew Power Limited, Bhuj
RENEW_PVGD	ReNew Wind Energy (TN2) Private Limited
RENEW_ROSHNI FATEHGARH	Renew Surya Roshni Private Limited-Fatehgarh-III PS
RENEW_SAAVAN	Renew Surya Aayan Private Limited
RENEW_SLR_BKN	Renew Solar Bikaner
RENEW_SOJAS	Renew Surya Ojas Private Limited-Wind
RENEW_SPRATAP	Renew Surya Pratap Private Limited
RENEW_SR_SLR	Renew Surya Ravi Private Limited (Solar)
RENEW_SVIHAAN	Renew Surya Vihaan Private Limited
RENEW_ROSHNI	Renew Surya Roshni Private Limited Koppal PS
RENEWJH_SLR	Renew Solar Energy (Jharkhand Three) Private Limited
RENEWURJA_SLR	ReNew Solar Urja Private Limited
RGPPL_IR	Ratnagiri Gas and Power Private Ltd., supply to Indian Railways
RGPPL_OTHER	Ratnagiri Gas and Power Private Limited
RISING_SLR	Rising Sun Energy Pvt. Ltd.
RLDC	Regional Load Dispatch Centre
RONGNICHU HEP	Rongnichu Hydro Electric Power Project
RPREL	Raipur Energen Limited
RSTPS_FSPP	NTPC Ramagundam STPS- Floating Solar PV Project
RTC	Round The Clock
RTM	Real Time Market
SasanUMPP	Sasan Ultra Mega Power Project
SB_SLR	Soft Bank Solar
SB6_POKARAN	SB Energy Six Private Limited, Pokaran
SBG CLEANTECH_SLR	SBG Cleantech Ltd
SBG_NPK	SB Energy Solar Private Limited,NP Kunta
SBG_PVGD	SB Energy Solar Private Limited,Pavagada
SBSR_SLR	SBSR Power Cleantech Eleven Private Limited
SEMBCORP	Sembcorp Gayatri Power Ltd
SIMHAPURI	Simhapuri Energy Private Limited
SKS Power	SKS Power Generation Chhattisgarh Limited
SESPL	Srijan Energy Systems Pvt. Ltd.
SINGOLI BHATWARI HEP	Singoli-Bhatwari Hydroelectric Project, Uttarakhand
SKRPL	Sitac Kabini Renewables Pvt. Ltd.
SPRNG_NPKUNTA	Spring Energy, NP Kunta
SPRING_PUGALUR	Spring Solar Power Private Limited, Pugalur
SUL	Sikkim Urja Limited

TALA HEP	Tala Hydroelectric Project, Bhutan
TASHIDENG HEP	Tashiding Hydro Electric Project, Sikkim
TATA_ANTP	TATA Power Anantapur
TATA_PVGD	Tata Power Renewable Energy Ltd
TATA_SLR	Tata Solar
TAM	Term Ahead Market
TEESTA STG3	Teesta Stage 3 Hydro Power Project
TEHRI	Tehri Hydro Electric Power Project
TESPL	Transition Energy Services Private Limited
THAR1_SLR	Thar Surya Ravi One Pvt Ltd
THERMAL POWERTECH	Thermal Powertech Corporation India Limited
TPREL_RADHANESDA	Tata Power Renewable Energy Limited, Radhanesda
TPS	Thermal Power Station
TPSL	TP Saurya Limited
VINDHYACHAL HVDC	Vindhyachal High Voltage Direct Current Link
WA	Weighted Average
YARROW_PVGD	Yarrow Infra Structure Private Ltd

1. Introduction

1.1. A well-functioning electricity market requires an effective market monitoring process. The monthly report on short-term transactions of electricity, published by CERC since 2008 as part of its market monitoring process, provides a snapshot of key aspects of short-term transactions of electricity in India. Here, “short-term transactions of electricity” refers to the contracts of less than one year period for electricity transacted (inter-State) - through Trading Licensees, directly between entities and on Power Exchanges (Indian Energy Exchange Ltd. (IEX), Power Exchange India Ltd. (PXIL) and Hindustan Power Exchange Ltd. (HPX)). “DSM Volume” includes the volume recorded under Deviation Settlement Mechanism. The main objectives of the report are: (i) to analyse the volume and price of the short-term transactions of electricity; (ii) to assess the competition among the market players; (iii) to analyse the effect of congestion on the volume of electricity transacted through power exchanges; (iv) to provide information on volume and price of Renewable Energy Certificates (RECs) transacted through power exchanges; and (v) to disseminate all other relevant market information. The analysis of short-term transactions of electricity and DSM volume during the month of **December 2024** is presented in the following sections.

2. Volume of Short-term Transactions of Electricity and DSM

2.1. During December 2024, total electricity generation, excluding generation from renewable and captive power plants in India, was 120852.41 MU (Table-1). Of the total electricity generation, 15.29% was transacted through short-term and DSM, comprising 8.77% through power exchanges {Day Ahead Market (DAM) (including G-DAM & HP-DAM) and Real Time Market (RTM)}, followed by 4.50% through bilateral (through Traders and Term-Ahead contracts on power exchanges, and directly between entities), and 2.02% through DSM (Table-1 & Figure-1).

2.2. Of the total short-term transactions and DSM volume (18478.85 MU¹), 57.37% was transacted through power exchanges {DAM (including G-DAM & HP-DAM) and RTM}, followed by 29.40% through bilateral² (i.e., through Traders, Term-Ahead contracts on power exchanges and directly between entities), and 13.23% through DSM (Table-1 & Figure-2). The

¹ Volume here has been finalised in consultation with Grid India, after resolving issues that emerged post implementation of GNA Regulations and transition to new WBES software by Grid India.

² includes bilateral short-term transactions under GNA and T-GNA

daily volume of short-term transactions is shown in Table-30. Figure-4 shows the daily volume trend for short-term transactions and DSM volume.

2.3. Of the total volume of electricity transacted through power exchanges, 58.74% of the volume was transacted in DAM (including G-DAM & HP-DAM), followed by 25.21% in RTM and 16.05% in Term Ahead Market (TAM) (including G-TAM & HP-TAM) (Figure-3).

2.4. The share of electricity traded by each trading licensee is given in Table-2 & Figure-5 shows the share of the top 5 trading licensees. The volume of electricity transacted by the trading licensees includes bilateral transactions and transactions undertaken through power exchanges. There were 65 trading licensees as of December 2024. Of these, 38 trading licensees were engaged in short-term trading. The top 5 trading licensees, namely PTC India Ltd., Powerpulse Trading Solutions Ltd., NTPC Vidyut Vyapar Nigam Ltd., Tata Power Trading Company (P) Ltd., and Manikaran Power Ltd., had a share of 82.94% in the total volume of electricity traded by all the licensees.

2.5. Herfindahl-Hirschman Index (HHI), a commonly accepted index to calculate market concentration, has been used to measure competition among trading licensees. An increase in the HHI generally indicates a decrease in competition and an increase in market concentration, and vice versa. The HHI below 0.15 indicates non-concentration, the HHI between 0.15 and 0.25 indicates moderate concentration, and the HHI above 0.25 indicates high concentration. The HHI has been computed based on the volume of electricity traded (inter-State & intra-State) by inter-State trading licensees, and it was 0.2092 for the month of December 2024, which indicates the moderate concentration of market power (Table-2).

2.6. The volume of electricity transacted in the DAM of IEX, PXIL and HPX was 6643.13 MU, 1.81 MU and 0.28 MU, respectively. The volume of total buy bids and sell bids was 10306.79 MU and 14465.26 MU, respectively in IEX; 108.27 MU and 222.14 MU, respectively, in PXIL; and 2.21 MU and 89.57 MU, respectively in HPX.

2.7. Of the total volume of electricity transacted in the DAM of IEX, the volume sold by the neighbouring countries of India was 3.00 MU, and the volume purchased by the neighbouring countries was 257.73 MU, under the Cross Border Trade of electricity through power exchanges (Table-37(a)). No Cross Border transaction of electricity was undertaken through PXIL and HPX.

2.8. The volume of electricity transacted in the G-DAM of IEX was 772.34 MU, while no electricity was transacted in the G-DAM of PXIL and HPX. The volume of total buy bids and sell bids was 3555.47 MU and 1076.53 MU, respectively, in IEX. While the volume of buy bids was 208.82 MU, no sell bids were received in PXIL. No bids were received in HPX.

2.9. No electricity was transacted in the HP-DAM of IEX, PXIL, and HPX. While no buy bids were received in IEX, the volume of total sell bids was 2467.12 MU. No bids were received in PXIL and HPX.

2.10. The volume of electricity transacted in the RTM of IEX and PXIL was 3180.04 MU and 3.68 MU, respectively, while no electricity was transacted in RTM of HPX. The volume of total buy bids and sell bids was 4448.89 MU and 7787.44 MU, respectively, in IEX. The same was 7.78 MU and 9.44 MU, respectively, in PXIL. While no buy bids were received in HPX, the volume of total sell bids was 4.63 MU. The variation in the volume of buy bids and sell bids placed through power exchanges shows variation in the demand and supply position.

2.11. Of the total volume of electricity transacted in the RTM of IEX, the volume sold by the neighbouring countries of India was 6.27 MU, and the volume purchased was 37.82 MU, under the Cross Border Trade of electricity through power exchanges (Table-37(b)). No Cross Border transaction of electricity was undertaken through PXIL and HPX.

2.12. The volume of electricity transacted in the TAM of IEX, PXIL, and HPX was 497.72 MU, 1023.91 MU, and 427.92 MU, respectively (Table-9, Table-10 & Table-11). The volume of electricity transacted in the Green Term Ahead Market (G-TAM) of IEX, PXIL and HPX was 17.85 MU, 14.42 MU, and 43.87 MU, respectively (Table-12, Table-13 & Table-14).

2.13. The volume of electricity transacted in the HP-TAM of PXIL was 1.80 MU (Table-16). No electricity was transacted in HP-TAM of IEX and HPX (Table-15 & Table-17).

3. Price of Short-term Transactions of Electricity and DSM charges

3.1. **Price of electricity transacted through Traders:** The minimum, maximum and weighted average sale prices for the electricity transacted through traders were ₹2.43/kWh, ₹8.00/kWh and ₹5.72/kWh, respectively (Table-3). The weighted average sale prices were also computed for the electricity transacted during Round the Clock (RTC) and Off-peak periods separately, and the sale prices were ₹5.41/kWh and ₹6.23/kWh, respectively. No electricity was transacted through traders during only Peak periods (Table-4).

3.2. **Price of electricity transacted through Power Exchanges:** The minimum, maximum, and weighted average prices for the electricity transacted in the DAM of IEX were ₹1.61/kWh, ₹10.00/kWh, and ₹3.86/kWh, respectively. These prices in the DAM of PXIL were ₹4.36/kWh, ₹10.00/kWh, and ₹7.02/kWh, respectively. These prices in the DAM of HPX were ₹4.58/kWh, ₹10.00/kWh, and ₹9.52/kWh, respectively (Table-5). The minimum, maximum, and weighted average prices for the electricity transacted in the G-DAM of IEX were ₹1.60/kWh, ₹10.00/kWh, and ₹3.92/kWh, respectively (Table-6). The minimum, maximum, and weighted average prices for the electricity transacted in the RTM of IEX were ₹0.40/kWh, ₹10.00/kWh, and ₹3.80/kWh, respectively. These prices in the RTM of PXIL were ₹10.00/kWh, ₹10.00/kWh, and ₹10.00/kWh, respectively (Table-8). The weighted average price of electricity transacted in the TAM of IEX, PXIL, and HPX was ₹5.60/kWh, ₹5.57/kWh and ₹5.91/kWh, respectively (Table-9, Table-10, and Table-11). The weighted average price of electricity transacted in the G-TAM of IEX, PXIL, and HPX was ₹5.13/kWh, ₹4.58/kWh and ₹4.59/kWh, respectively (Table-12, Table-13 and Table-14). The weighted average price of electricity transacted in the HP-TAM of PXIL was ₹17.85/kWh (Table-16). No electricity was transacted in HP-DAM & HP-TAM of IEX; in G-DAM & HP-DAM of PXIL; and in G-DAM, HP-DAM, RTM & HP-TAM of HPX.

3.3. **DSM Charges:** The minimum, maximum and average charges under DSM was ₹1.91/kWh, ₹34.15/kWh and ₹4.79/kWh, respectively (Table-33).

3.4. The comparison of weighted average prices of electricity transacted through trading licensees and power exchanges (collective transactions) is shown in Figure-6. The daily prices of electricity transacted through various segments (collective transactions) at power exchanges and their comparison are shown in Table-31(a), (b), (c) & (d) and Figure-7. The daily volume and charges under DSM are shown in Table-33.

4. Trading Margin

4.1. As per the CERC (Procedure, Terms, and Conditions for grant of trading licence and other related matters) Regulations 2020, the trading licensees are allowed to charge a trading margin of not less than 0 paise/kWh and up to 7 paise/kWh. The weighted average trading margin charged by the trading licensees for bilateral transactions during the month was ₹0.017/kWh.

5. Volume of Short-term Transactions of Electricity (Regional Entity³-Wise)

5.1. Of the total bilateral transactions, the top 5 regional entities/states sold 39.66% of the volume. These were Uttar Pradesh, Punjab, Jindal Power Limited Stage-II, SKS Power Generation Chhattisgarh Ltd. and Jindal India Thermal Power Limited. The HHI for sellers was 0.0541, which indicates non-concentration of the market (Table-18). The top 5 regional entities/states purchased 60.52% of the volume, and these were Madhya Pradesh, Rajasthan, Tamil Nadu, Jammu & Kashmir, and Himachal Pradesh. The HHI for buyers was 0.1040, which indicates the non-concentration of market (Table-19).

5.2. Of the total DAM transactions at power exchanges, the top 5 regional entities/states sold 42.87% of the volume, and these were Uttar Pradesh, Chhattisgarh, Odisha, Jindal Power Limited Stage-II, and Bihar. The HHI for sellers in DAM was 0.0512, which indicates the non-concentration of the market (Table-20). The top 5 regional entities/states purchased 66.22% of the volume, and these were Telangana, Gujarat, Maharashtra, Andhra Pradesh, and Uttar Pradesh. The HHI for buyers in DAM was 0.1606, which indicates a moderate concentration of the market (Table-21).

5.3. Of the total G-DAM transactions at power exchanges, the top 5 regional entities/states sold 60.24% of the volume, and these were Karnataka, Adani Renewable Energy Holding Four Ltd., Adani Renewable Energy Holding Four Ltd. (PSS-1), Madhya Pradesh, and Adani Wind Energy Kutchh Four Ltd. Nakhatrana. The HHI for sellers in G-DAM was 0.1989, which indicates a moderate concentration of the market (Table-22). The top 5 regional entities/states purchased 66.60% of the volume, and these were Damodar Valley Corporation, Maharashtra,

³ In case of a State, the entities which are “selling” also include generators connected to State Grid and the entities which are “buying” also include open access consumers.

Arcelor Mittal Nippon Steel Hazira, Tamil Nadu and Odisha. The HHI for buyers in G-DAM was 0.1095, which indicates non-concentration of the market (Table-23).

5.4. No volume was traded in HP-DAM of all three power exchanges.

5.5. Of the total RTM transactions at power exchanges, the top 5 regional entities/states sold 39.61% of the volume, and these were Bihar, Tamil Nadu, Madhya Pradesh, Uttar Pradesh and West Bengal. The HHI for sellers in RTM was 0.0478, which indicates the non-concentration of market (Table-26). The top 5 regional entities/states purchased 55.86% of the volume, and these were Telangana, Punjab, Maharashtra, Tamil Nadu and Rajasthan. The HHI for buyers in RTM was 0.0861, which indicates non-concentration of the market (Table-27).

5.6. The total volume of net short-term transactions of electricity (Regional entity-wise), i.e., the volume of net transactions through bilateral and power exchanges, is shown in Table-28 & 32. The top 5 electricity selling regional entities/states of short-term transactions were Uttar Pradesh, Bihar, Jindal Power Limited Stage-II, Chhattisgarh, and Odisha. The top 5 electricity purchasing regional entities/states of short-term transactions were Telangana, Maharashtra, Gujarat, Rajasthan, and Madhya Pradesh.

5.7. Of the total under-drawal/ over-injection volume under DSM in December 2024, the top 5 regional entities/states accounted for 23.27% of the volume, and these were Madhya Pradesh, Gujarat, Rajasthan, Tamil Nadu, and Punjab (Table-34). The top 5 regional entities/states under DSM accounted for 17.08% of the total over-drawal/ under-injection volume, and these were Maharashtra, Tamil Nadu, Rajasthan, Uttar Pradesh, and Odisha (Table-35).

6. Congestion⁴ on Inter-State Transmission Corridor for Day-Ahead Market and Real Time Market on Power Exchanges

6.1. Power exchanges use a price discovery mechanism in which the aggregate demand and supply are matched to arrive at an unconstrained market price and volume. This process assumes that there is no congestion in the inter-State transmission system between different regions. However, in reality, the system operator (NLDC), in coordination with RLDCs, limits

⁴ “Congestion” means a situation where the demand for transmission capacity exceeds the available transfer capability

the flow (due to congestion) in the inter-State transmission system. In such a situation, power exchanges adopt a mechanism called “Market Splitting”⁵.

6.2. The volume of electricity that could not be cleared due to congestion & other reasons and could not be transacted through power exchanges is the difference between unconstrained cleared volume and actual cleared volume. During the month of December 2024, no congestion was experienced in any of the power exchanges (Table-29).

7. Volume and Price of Renewable Energy Certificates (RECs)

7.1. The concept of Renewable Energy Certificates (RECs) seeks to address the mismatch between the availability of renewable energy and the requirement of the obligated entities to meet their renewable purchase obligation by purchasing green attributes of renewable energy remotely located in the form of RECs. The REC mechanism is a market-based instrument to promote renewable sources of energy and the development of the electricity market.

7.2. One REC is equivalent to 1 MWh of electricity injected into the grid from renewable energy sources. The REC is exchanged only in the power exchanges approved by CERC within the band of a floor price and forbearance (ceiling) price as notified by CERC from time to time. The first REC trading was held on power exchanges in May 2011.

7.3. The categorisation of RECs has been dispensed with on introduction of the concept of multiplier under the CERC (Terms and Conditions for Renewable Energy Certificates for Renewable Energy Generation) Regulations, 2022, brought into effect from 05.12.2022. Accordingly, the power exchanges deactivated the Solar and Non-Solar REC contract for trading w.e.f. December 2022. A new contract named “REC” has been made available for trading on the power exchanges. Further, RECs can also be exchanged through trading licensees as per the REC Regulations 2022.

⁵“Market Splitting” is a mechanism adopted by Power Exchanges, where the market is split in the event of transmission congestion, into predetermined (by NLDC) bid areas or zones, which are cleared individually at their respective area prices such that the energy balance in every bid area is reached based upon the demand and supply in individual bid areas and using the available transmission corridor capacity between various bid areas simultaneously. As a result of this market splitting the price of electricity in the importing region, where demand for electricity is more than supply, becomes relatively higher than the price of electricity in the exporting region.

7.4. The details of REC transactions for the month of December 2024 are shown in Table-36. The market clearing volume of RECs transacted on IEX, PXIL, and HPX was 1662203, 885119 and 20000, respectively. The weighted average market clearing price of these RECs was ₹282/MWh in IEX, ₹281/MWh in PXIL, and ₹290/MWh in HPX.

7.5. The gap between the volume of buy and sell bids of RECs placed through power exchanges shows the variation in demand for the RECs. The ratio of buy bids to sell bids was 1.37, 1.03 and 0.41 in IEX, PXIL, and HPX, respectively.

7.6. The volume of RECs transacted through Trading Licensees in December 2024 was 100533. The weighted average trade price for the RECs transacted through traders was ₹265/MWh.

8. Inferences:

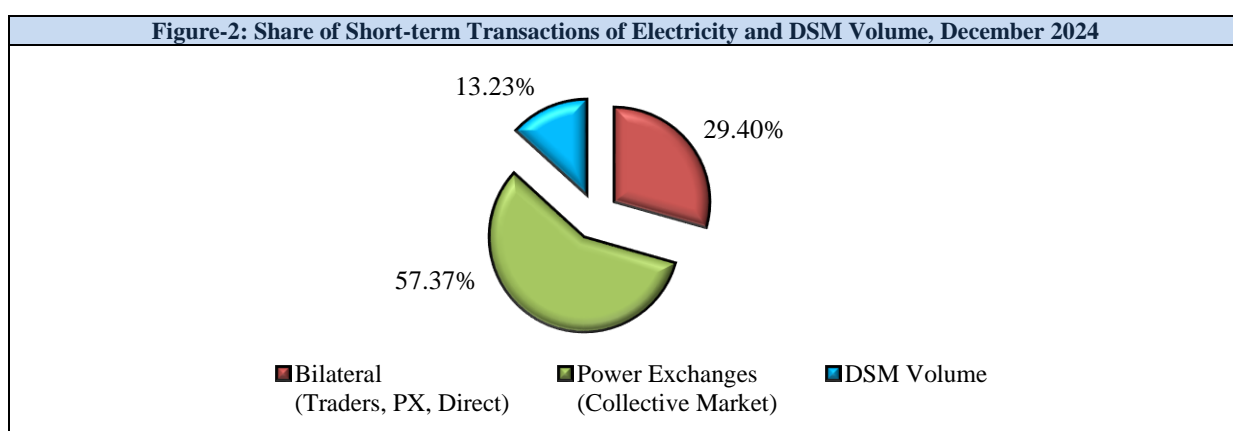
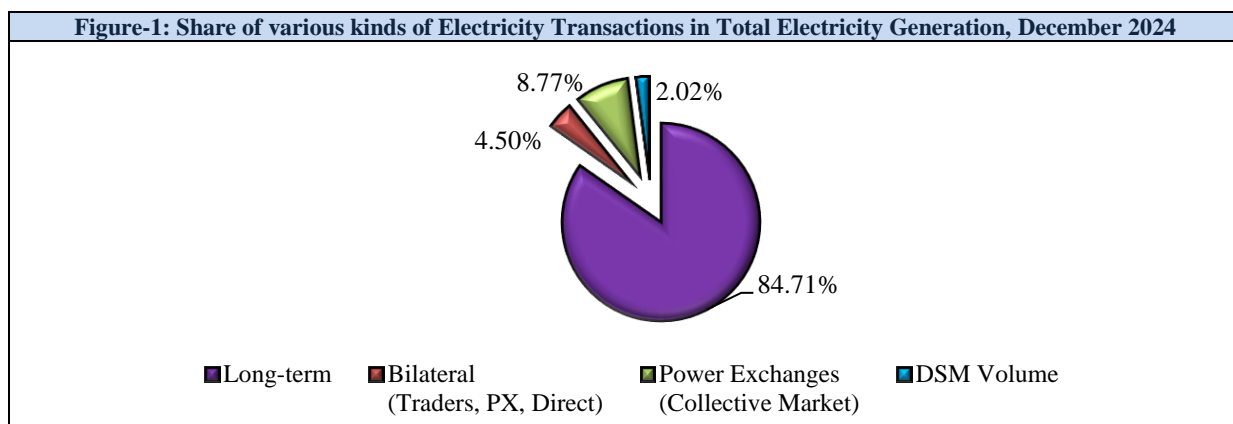
- a) The percentage of short-term transactions of electricity and DSM volume to total electricity generation was 15.29%.
- b) Of the total short-term transactions and DSM volume (18478.85 MU), 57.37% was transacted through power exchanges {DAM (including G-DAM & HP-DAM) and RTM}, followed by 29.40% through bilateral (i.e., through Traders, Term-Ahead contracts on power exchanges and directly between entities), and 13.23% through DSM
- c) Of the total volume of electricity transacted through power exchanges, 58.74% of the volume was transacted in DAM (including G-DAM & HP-DAM), followed by 25.21% in RTM and 16.05% in Term Ahead Market (TAM) (including G-TAM & HP-TAM).
- d) The top 5 trading licensees had a share of 82.94% in the total volume traded by all the trading licensees.
- e) The Herfindahl Hirschman Index computed for the volume of electricity traded by trading licensees was 0.2092, indicating the moderate concentration of market power.
- f) The weighted average sale price of electricity transacted through trading licensees was ₹5.72/kWh.
- g) The weighted average price of electricity transacted in DAM of IEX, PXIL, and HPX was ₹3.86/kWh, ₹7.02/kWh, and ₹9.52/kWh, respectively. The weighted average price of

electricity transacted in G-DAM of IEX was ₹3.92/kWh, while no electricity was transacted in G-DAM of PXIL and HPX. No electricity was transacted in HP-DAM of all the three power exchanges. The weighted average price of electricity transacted in the RTM of IEX and PXIL was ₹3.80/kWh and ₹10.00/kWh, respectively.

- h) The weighted average price of electricity transacted in TAM of IEX, PXIL, and HPX was ₹5.60/kWh, ₹5.57/kWh, and ₹5.91/kWh, respectively. The weighted average price of electricity transacted in G-TAM of IEX, PXIL, and HPX was ₹5.13/kWh, ₹4.58/kWh, and ₹4.59/kWh, respectively. The weighted average price of electricity transacted in HP-TAM of PXIL was ₹17.85/kWh. No electricity was traded in HPTAM of IEX and HPX.
- i) The average charge under DSM was ₹4.79/kWh.
- j) The weighted average trading margin charged by the trading licensees for bilateral transactions was ₹0.017/kWh.
- k) The top 5 electricity selling regional entities/states of short-term transactions were Uttar Pradesh, Bihar, Jindal Power Limited Stage-II, Chhattisgarh, and Odisha. The top 5 electricity purchasing regional entities/states of short-term transactions were Telangana, Maharashtra, Gujarat, Rajasthan, and Madhya Pradesh.
- l) The top 5 under-drawing/ over-injecting regional entities/states under DSM were Madhya Pradesh, Gujarat, Rajasthan, Tamil Nadu, and Punjab. The top 5 over-drawing/ under-injecting regional entities/states under DSM were Maharashtra, Tamil Nadu, Rajasthan, Uttar Pradesh, and Odisha.
- m) During December 2024, no congestion was experienced in any of the power exchanges.
- n) The market clearing volume of RECs transacted on IEX, PXIL, and HPX was 1662203, 885119 and 20000, respectively. The weighted average market clearing price of these RECs was ₹282/MWh in IEX, ₹281/MWh in PXIL, and ₹290/MWh in HPX. The volume of RECs transacted through Trading Licensees in December 2024 was 100533. The weighted average trade price for the RECs transacted through traders was ₹265/MWh.

Table-1: VOLUME OF SHORT-TERM TRANSACTIONS OF ELECTRICITY AND DSM (ALL INDIA), DECEMBER 2024				
Sr. No	Transaction	Volume (MU)	% to short-term transactions and DSM Volume	% to Total Generation
A	Short-term transactions			
1	Bilateral ⁶ (Traders, PX, Direct)	5433.69	29.40	4.50
2	Power Exchanges (Collective Market)	10601.28	57.37	8.77
	(i) IEX			
	(a) DAM	6643.13	35.95	5.50
	(b) RTM	3180.04	17.21	2.63
	(c) GDAM	772.34	4.18	0.64
	(d) HP-DAM	0.00	0.00	0.00
	(ii) PXIL			
	(a) DAM	1.81	0.01	0.001
	(b) RTM	3.68	0.02	0.003
	(c) GDAM	0.00	0.00	0.00
	(d) HP-DAM	0.00	0.00	0.00
	(ii) HPX			
	(a) DAM	0.28	0.00	0.00
	(b) RTM	0.00	0.00	0.00
	(c) GDAM	0.00	0.00	0.00
	(d) HP-DAM	0.00	0.00	0.00
B	Through DSM	2443.87	13.23	2.02
Total Short-term transactions and DSM⁷		18478.85	-	15.29
Total Generation		120852.41	-	-

Source: NLDC



⁶ includes bilateral short-term transactions under GNA and T-GNA

⁷ Volume here has been finalized in consultation with Grid India, after resolving issues that emerged post implementation of GNA Regulations and transition to new WBES software by Grid India.

Figure-3: Share of volume transacted in different market segments on Power Exchanges, December 2024

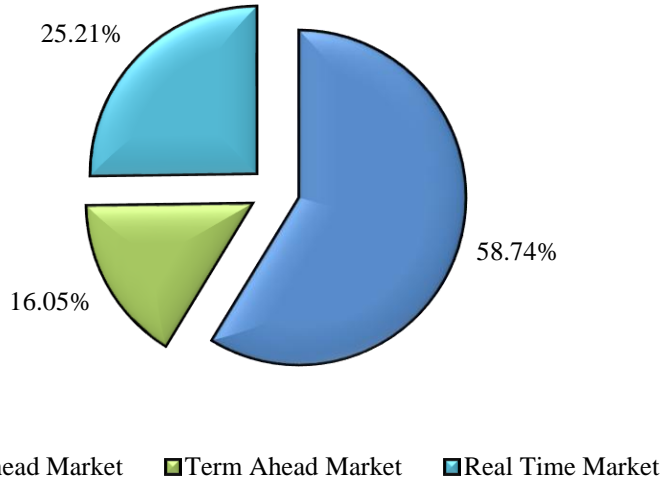


Figure-4: Volume of Short-term transactions and DSM Volume, December 2024 (Day-wise)

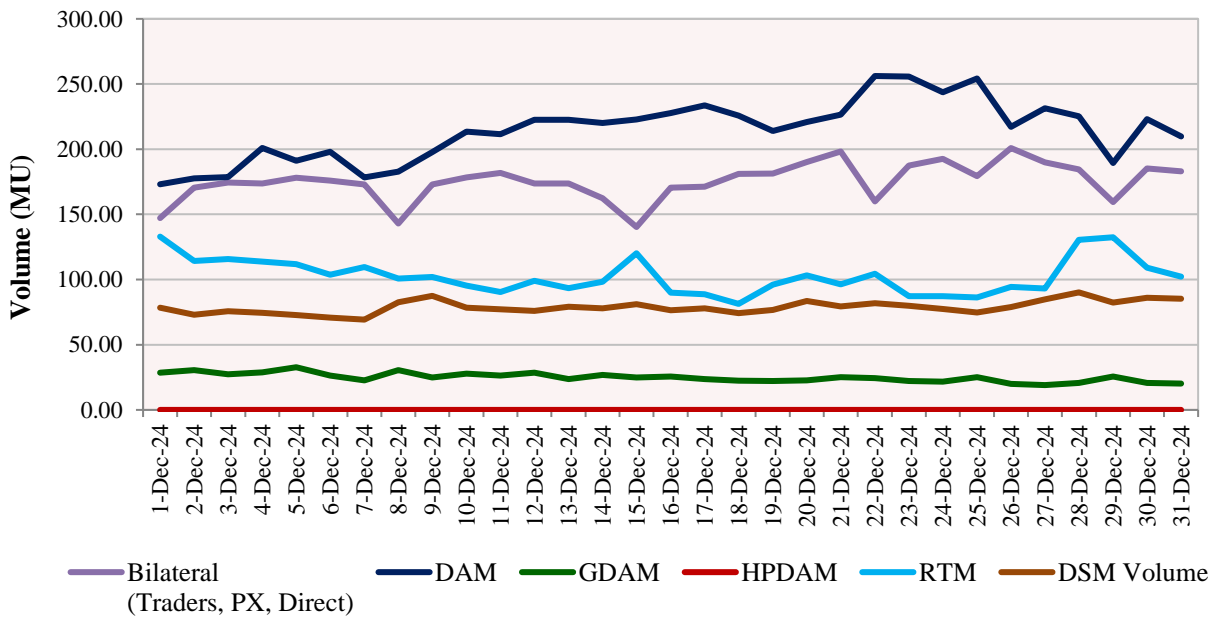


Table-2: PERCENTAGE SHARE OF ELECTRICITY TRANSACTED BY TRADING LICENSEES, DECEMBER 2024

Sr. No	Name of the Trading Licensee	% Share in total Volume traded by Trading Licensees
1	PTC India Ltd.	37.43
2	Powerpulse Trading Solutions Ltd.	19.48
3	NTPC Vidyut Vyapar Nigam Ltd.	14.72
4	Tata Power Trading Company (P) Ltd.	5.66
5	Manikaran Power Ltd.	5.65
6	JSW Power Trading Company Ltd	3.13
7	Arunachal Pradesh Power Corporation (P) Ltd	2.72
8	GMR Energy Trading Ltd.	2.57
9	Kreate Energy (I) Pvt. Ltd.	1.52
10	Instinct Infra & Power Ltd.	1.21
11	Gita Power & Infrastructure Private Limited	0.76
12	Abja Power Private Limited	0.76
13	Ideal Energy Solution Pvt. Ltd.	0.62
14	RPG Power Trading Company Ltd.	0.57
15	Ambitious Power Trading Company Ltd.	0.48
16	Energyedge Power Trading Pvt. Ltd.	0.46
17	Greenko Energies Pvt Ltd	0.44
18	NEFA Power Trading Pvt. Ltd.	0.42
19	Saranyu Power Trading Private Limited	0.22
20	NLC India Ltd.	0.20
21	Kundan International Pvt. Ltd.	0.18
22	Statkraft Markets Pvt. Ltd.	0.18
23	Instant Ventures Pvt. Ltd.	0.14
24	SJVN Ltd.	0.10
25	Elsa Consultancy	0.07
26	Powerfull Energy Trading Pvt. Ltd.	0.07
27	Adarsh Stainless Pvt. Ltd.	0.05
28	Saini Power Transactor	0.04
29	Phillip Commodities India (P) Ltd.	0.03
30	REL Power Trading LLP	0.03
31	Shree Cement Ltd.	0.03
32	Customized Energy Solutions India (P) Ltd.	0.02
33	Altilium Energie Private Limited	0.02
34	Shubheksha Advisors Pvt. Ltd.	0.01
35	Amp Energy Markets India Private Limited	0.01
36	Shell Energy Marketing and Trading India Pvt. Ltd.	0.01
37	Refex Industries Ltd.	0.002
38	Renesis Solar Pvt. Ltd.	0.002
TOTAL		100.00%
Top 5 trading licensees		82.94%
Herfindahl-Hirschman Index (HHI)		0.2092

Note 1: Volume of electricity transacted by the trading licensees includes bilateral transactions (inter-state & intra-state) and the transactions undertaken through power exchanges.

Source: Information submitted by trading licensees

Figure 5: Percentage Share of Electricity Transacted by Trading Licensees, December 2024

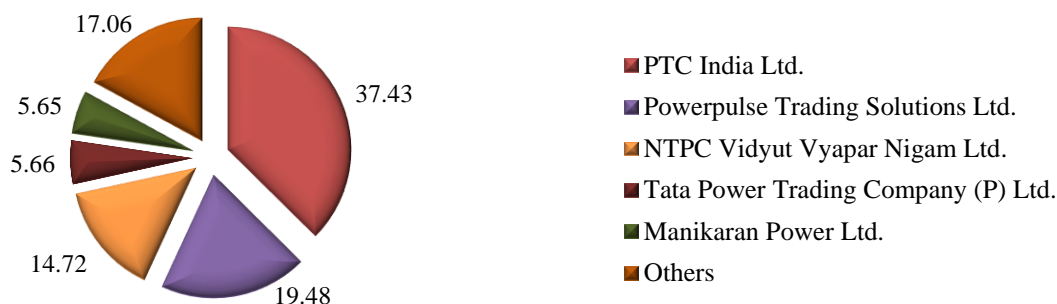


Table-3: PRICE OF ELECTRICITY TRANSACTED THROUGH TRADERS, DECEMBER 2024

Sr.No	Item	Sale Price of Traders (₹/kWh)
1	Minimum	2.43
2	Maximum	8.00
3	Weighted Average	5.72

Source: Information submitted by trading licensees

Table-4: PRICE OF ELECTRICITY TRANSACTED THROUGH TRADERS (TIME-WISE), DECEMBER 2024

Sr.No	Period of Trade	Sale Price of Traders (₹/kWh)
1	RTC	5.41
2	PEAK	-
3	OFF PEAK	6.23

Source: Information submitted by trading licensees

Table-5: PRICE OF ELECTRICITY TRANSACTED IN DAY AHEAD MARKET, DECEMBER 2024

Sr.No	ACP	Price in IEX (₹/kWh)	Price in PXIL (₹/kWh)	Price in HPX (₹/kWh)
1	Minimum	1.61	4.36	4.58
2	Maximum	10.00	10.00	10.00
3	Weighted Average	3.86	7.02	9.52

Source: IEX, PXIL and HPX

Table-6: PRICE OF ELECTRICITY TRANSACTED IN GREEN DAY AHEAD MARKET, DECEMBER 2024

Sr.No	ACP	Price in IEX (₹/kWh)	Price in PXIL (₹/kWh)	Price in HPX (₹/kWh)
1	Minimum	1.60	-	-
2	Maximum	10.00	-	-
3	Weighted Average	3.92	-	-

Source: IEX, PXIL and HPX

Table-7: PRICE OF ELECTRICITY TRANSACTED IN HIGH PRICE DAY AHEAD MARKET, DECEMBER 2024

Sr.No	ACP	Price in IEX (₹/kWh)	Price in PXIL (₹/kWh)	Price in HPX (₹/kWh)
1	Minimum	-	-	-
2	Maximum	-	-	-
3	Weighted Average	-	-	-

Source: IEX, PXIL and HPX

Table-8: PRICE OF ELECTRICITY TRANSACTED IN REAL TIME MARKET, DECEMBER 2024

Sr.No	ACP	Price in IEX (₹/kWh)	Price in PXIL (₹/kWh)	Price in HPX (₹/kWh)
1	Minimum	0.40	10.00	-
2	Maximum	10.00	10.00	-
3	Weighted Average	3.80	10.00	-

Source: IEX, PXIL and HPX

Table-9: VOLUME AND PRICE OF ELECTRICITY IN TERM AHEAD MARKET OF IEX, DECEMBER 2024

Sr.No	Term ahead contracts	Actual Scheduled Volume (MU)	Weighted Average Price (₹/kWh)
1	Intra-Day Contracts	3.05	9.56
2	Day Ahead Contingency Contracts	86.89	6.70
3	Daily Contracts	149.65	5.14
4	Monthly Contracts	11.00	4.25
5	Any Day Single Sided Contracts	247.14	5.49
	Total	497.72	5.60

Source: IEX

Table-10: VOLUME AND PRICE OF ELECTRICITY IN TERM AHEAD MARKET OF PXIL, DECEMBER 2024			
Sr.No	Term ahead contracts	Actual Scheduled Volume (MU)	Weighted Average Price (₹/kWh)
1	Intra-Day Contracts	11.02	8.81
2	Day Ahead Contingency Contracts	225.93	6.04
3	Daily Contracts	307.22	5.19
4	Monthly Contracts	5.58	3.50
5	Any Day Single Sided Contracts	474.16	5.55
	Total	1023.91	5.57

Source: PXIL

Table-11: VOLUME AND PRICE OF ELECTRICITY IN TERM AHEAD MARKET OF HPX, DECEMBER 2024			
Sr.No	Term ahead contracts	Actual Scheduled Volume (MU)	Weighted Average Price (₹/kWh)
1	Intra-Day Contracts	4.32	9.14
2	Day Ahead Contingency Contracts	64.97	8.46
3	Daily Contracts	195.35	5.46
4	Monthly Contracts	79.00	5.01
5	Any Day Single Sided Contracts	84.28	5.66
	Total	427.92	5.91

Source: HPX

Table-12: VOLUME AND PRICE OF ELECTRICITY IN GREEN TAM OF IEX, DECEMBER 2024			
Sr. No	Green Term ahead contracts	Actual Scheduled Volume (MU)	Weighted Average Price (₹/kWh)
1	Day Ahead Contingency Contracts	1.26	5.99
2	Daily Contracts	16.59	5.06
	Total	17.85	5.13

Source: IEX

Table-13: VOLUME AND PRICE OF ELECTRICITY IN GREEN TAM OF PXIL, DECEMBER 2024			
Sr. No	Green Term ahead contracts	Actual Scheduled Volume (MU)	Weighted Average Price (₹/kWh)
1	Day Ahead Contingency Contracts	1.06	4.81
2	Daily Contracts	13.36	4.56
	Total	14.42	4.58

Source: PXIL

Table-14: VOLUME AND PRICE OF ELECTRICITY IN GREEN TAM OF HPX, DECEMBER 2024			
Sr. No	Green Term ahead contracts	Actual Scheduled Volume (MU)	Weighted Average Price (₹/kWh)
1	Day Ahead Contingency Contracts	27.50	4.71
2	Daily Contracts	16.37	4.40
	Total	43.87	4.59

Source: HPX

Table-15: VOLUME AND PRICE OF ELECTRICITY IN HIGH PRICE TAM OF IEX, DECEMBER 2024			
Sr. No	High Price Term ahead contracts	Actual Scheduled Volume (MU)	Weighted Average Price (₹/kWh)
1	No Trade	0.00	-
	Total	0.00	-

Source: IEX

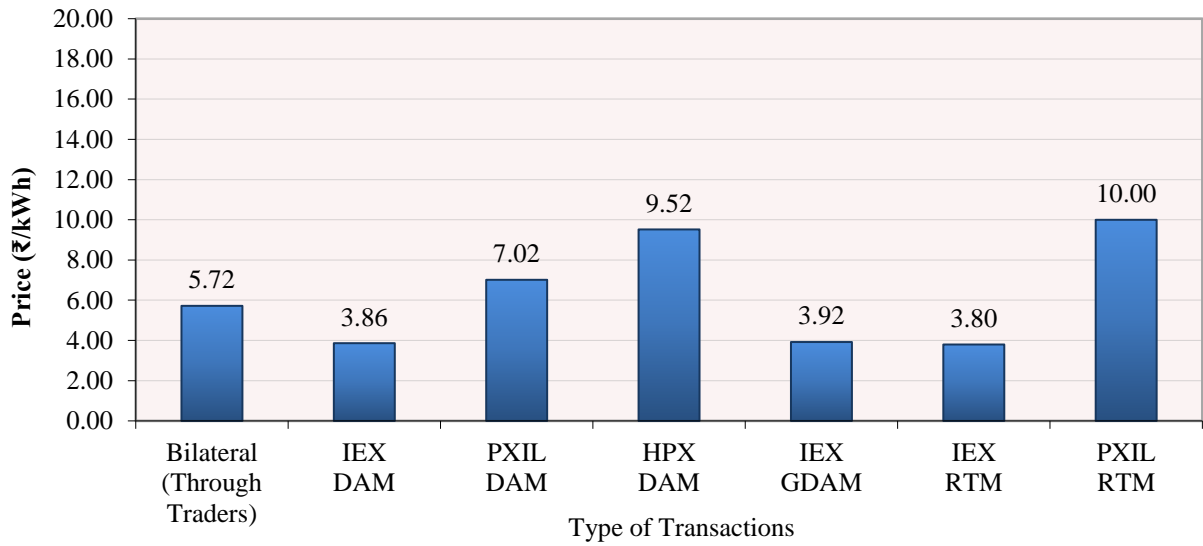
Table-16: VOLUME AND PRICE OF ELECTRICITY IN HIGH PRICE TAM OF PXIL, DECEMBER 2024			
Sr. No	High Price Term ahead contracts	Actual Scheduled Volume (MU)	Weighted Average Price (₹/kWh)
1	Intra-Day Contracts	1.80	17.85
	Total	1.80	17.85

Source: PXIL

Table-17: VOLUME AND PRICE OF ELECTRICITY IN HIGH PRICE TAM OF HPX, DECEMBER 2024			
Sr. No	High Price Term ahead contracts	Actual Scheduled Volume (MU)	Weighted Average Price (₹/kWh)
1	No Trade	0.00	-
	Total	0.00	-

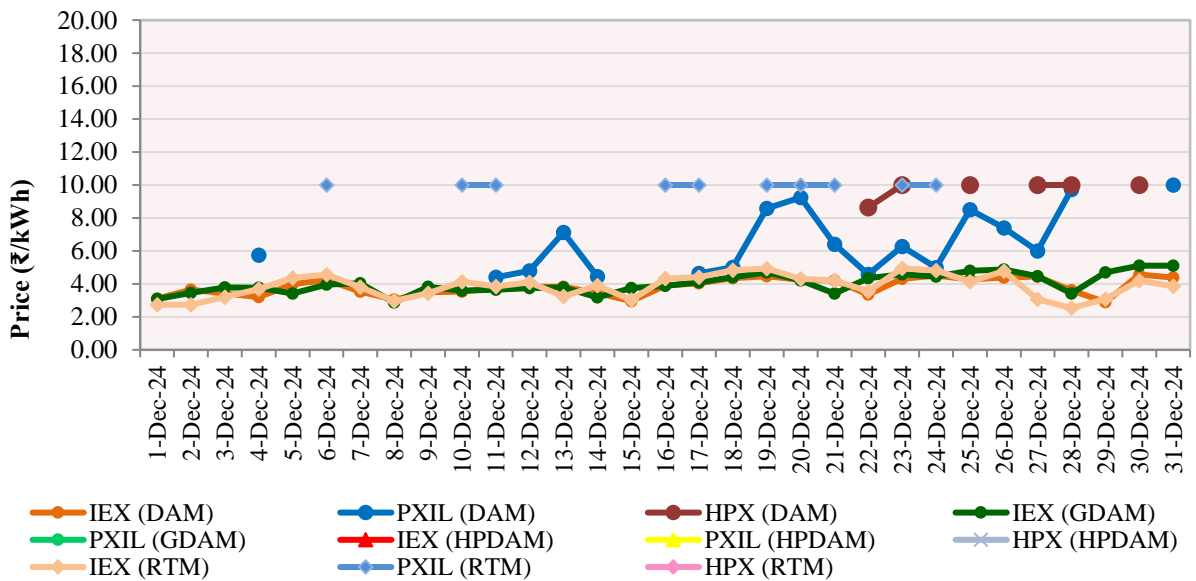
Source: HPX

Figure-6: Weighted Average Price of Short-term Transactions of Electricity, December 2024



Note: No electricity was transacted in G-DAM of PXIL & HPX, RTM of HPX and in HP-DAM of all power exchanges during December 2024

Figure-7: Weighted Average Price of Short-term Transactions of Electricity, December 2024 (Day-wise)



Note: No electricity was transacted in G-DAM of PXIL & HPX, RTM of HPX and in HP-DAM of all power exchanges during December 2024

Table-18: VOLUME OF ELECTRICITY SOLD THROUGH BILATERAL, DECEMBER 2024

Name of the Entity	Volume of Sale (MU)	% of Volume
Uttar Pradesh	869.97	16.01
Punjab	476.51	8.77
Jindal Power Limited, Stage-2	296.07	5.45
SKS Power Generation Chhattisgarh Limited	274.25	5.05
Jindal India Thermal Power Limited	238.36	4.39
Odisha	235.13	4.33
Haryana	220.93	4.07
Jaypee Nigrie Super Thermal Power Plant	212.17	3.90
Delhi	179.88	3.31
DHARIWAL STU MH	156.24	2.88
RKM_POWER	149.15	2.74
Telangana	145.61	2.68
Adani Power Limited-Raipur TPP	143.64	2.64
D B Power Limited	131.85	2.43
Andhra Pradesh	127.99	2.36
Gujarat	108.50	2.00
MB POWER (MADHYA PRADESH) LIMITED	91.90	1.69
IND BARATH ENERGY UTKAL LIMITED	86.50	1.59
COASTAL ENERGEN PRIVATE LIMITED	83.09	1.53
Chhattisgarh	72.57	1.34
Damodar Valley Corporation	71.70	1.32
Adani Power Limited - Raigarh TPP	71.20	1.31
MAHAN ENERGEN LIMITED U#2	63.61	1.17
Tamil Nadu	62.13	1.14
SIMHAPURI ENERGY LIMITED	59.43	1.09
West Bengal	57.90	1.07
ACB (INDIA) LIMITED	57.47	1.06
Rajasthan	57.21	1.05
Karnataka	48.90	0.90
Madhya Pradesh	48.49	0.89
Maharashtra	42.98	0.79
SEIL ENERGY INDIA LIMITED	42.28	0.78
SHREE CEMENT LIMITED TPS	37.48	0.69
R.K.M POWERGEN PRIVATE LIMITED	34.61	0.64
MAHAN ENERGEN LIMITED U#1	32.68	0.60
Jindal Power Limited, Stage-1	31.75	0.58
Jhabua Power Limited	29.22	0.54
TRN ENERGY PRIVATE LIMITED	28.52	0.52
Maruti Clean Coal and Power Limited	26.12	0.48
Serentica Renewables India 1 Private Limited	25.05	0.46
Bihar	24.30	0.45
ADANI RENEWABLE ENERGY HOLDING FOUR LIMITED_PSS-1	16.64	0.31
DHARIWAL STU OTH	13.81	0.25
GMR Warora Energy Limited	11.66	0.21
Goa WR	11.16	0.21
BHARAT ALUMINIUM COMPANY LTD	10.64	0.20
Ramagundam Floating solar	10.05	0.19
TPSL Banderwala SECI 100_INF	9.65	0.18
IRCON RENEWABLE POWER LIMITED	9.51	0.18
Dhariwal ISTS	9.20	0.17
TPSL 200MW TPTCL Banderwala	8.44	0.16
SEIL Energy India Limited Project II	7.92	0.15
OSTRO KANNADA POWER PRIVATE LIMITED	7.86	0.14
TANAKPUR POWER STATION	6.92	0.13

ADANI RENEWABLE ENERGY HOLDING FOUR LIMITED	6.73	0.12
Meghalaya	6.50	0.12
Uttarakhand	4.77	0.09
ReNew Surya Ravi Private Limited	4.02	0.07
HIMACHAL PRADESH	2.83	0.05
KARCHAM WANGTOO HYDRO ELECTRIC PLANT	2.75	0.05
Arunachal Pradesh	2.50	0.05
NTPC KUDGI	2.43	0.04
ADANI RENEWABLE ENERGY FORTY ONE LIMITED_PSS-3	2.13	0.04
IRCON RENEWABLE POWER LIMITED Infirm	1.85	0.03
Ratnagiri Gas & Power Private Limited	1.80	0.03
ADANI WIND ENERGY KUTCHH FOUR Ltd. Nakhatrana	1.73	0.03
Singoli Bhatwari HEP	1.48	0.03
Jindal Steel & Power Ltd , DCPD	1.20	0.02
Dikchu Hydro Electric Project (Sneha Kinetic Power Projects Pvt. Ltd.)	0.89	0.02
Serentica Renewables India 5 Private Limited	0.68	0.01
AMBUJA CEMENTS LIMITED(Khavda PSS-3)_infirm	0.52	0.01
Onevolt Energy Private Limited	0.44	0.01
BHARAT ALUMINIUM COMPANY LTD (Bulk Consumer)	0.35	0.01
Goa SR	0.32	0.01
AMBUJA CEMENTS LIMITED_PSS3	0.30	0.01
Sorang HEP (Himachal Sorang Power Pvt. Ltd.)	0.29	0.01
IGSTPS JHAJJAR	0.25	0.005
ADANI RENEWABLE ENERGY FORTY ONE LIMITED_infirm	0.14	0.003
Total	5433.69	100.00
Volume Sold by top 5 Regional Entities	2155.15	39.66
Herfindahl-Hirschman Index		0.0541

Source: NLDC

Table-19: VOLUME OF ELECTRICITY PURCHASED THROUGH BILATERAL, DECEMBER 2024

Name of the Entity	Volume of Purchase (MU)	% of Volume
Madhya Pradesh	1090.40	20.07
Rajasthan	870.22	16.02
Tamil Nadu	476.52	8.77
Jammu Kashmir	440.53	8.11
HIMACHAL PRADESH	410.85	7.56
Kerala	375.54	6.91
Gujarat	358.91	6.61
Maharashtra	334.24	6.15
Uttarakhand	300.22	5.53
Andhra Pradesh	127.97	2.36
Karnataka	112.92	2.08
Odisha	109.23	2.01
Delhi	103.38	1.90
Uttar Pradesh	48.59	0.89
Haryana	46.11	0.85
COASTAL ENERGEN PRIVATE LIMITED	45.69	0.84
Meghalaya	38.18	0.70
Goa WR	30.81	0.57
BHARAT ALUMINIUM COMPANY LTD (Bulk Consumer)	25.05	0.46
NEA - Bihar STU	18.54	0.34
Adani Power Limited - Raigarh TPP	13.13	0.24
Goa SR	11.16	0.21
Sikkim	9.20	0.17
AMNSIL_WR_State	8.95	0.16
Chandigarh (UT)	7.08	0.13
NEPAL_NR	6.92	0.13
Chhattisgarh	5.90	0.11
Assam	2.88	0.05
Bihar	1.42	0.03
Daman and Diu - Dadra and Nagar Haveli	1.16	0.02
Jharkhand	0.74	0.01
West Bengal	0.63	0.01
Telangana	0.38	0.01
MAHAN ENERGEN LIMITED U#2	0.24	0.004
TOTAL	5433.69	100.00
Volume Purchased by top 5 Regional Entities	3288.52	60.52
Herfindahl-Hirschman Index		0.1040

Source: NLDC

Table-20: VOLUME OF ELECTRICITY SOLD IN DAY AHEAD MARKET THROUGH POWER EXCHANGES, DECEMBER 2024

Name of the Entity	Volume of Sale (MU)	% of Volume
Uttar Pradesh	653.95	9.84
Chhattisgarh	614.26	9.24
Odisha	555.83	8.36
Jindal Power Limited, Stage-2	554.83	8.35
Bihar	469.64	7.07
Adani Power Limited-Raipur TPP	414.92	6.24
West Bengal	393.90	5.93
Jindal Power Limited, Stage-1	232.80	3.50
Adani Power Limited - Raigarh TPP	220.76	3.32
Haryana	201.02	3.02
Jaypee Nigrie Super Thermal Power Plant	179.57	2.70
Assam	147.08	2.21
MAHAN ENERGEN LIMITED U#1	122.70	1.85
Jindal India Power Limited	105.51	1.59
Jindal Steel & Power Ltd , DCP	97.59	1.47
Madhya Pradesh	91.42	1.38
IND BARATH ENERGY UTKAL LIMITED	90.64	1.36
SEIL ENERGY INDIA LIMITED	88.09	1.33
Karnataka	55.98	0.84
NABINAGAR POWER GENERATING COMPANY LIMITED	51.95	0.78
MAHAN ENERGEN LIMITED U#2	51.71	0.78
ADANI RENEWABLE ENERGY HOLDING FOUR LIMITED_PSS-1	48.73	0.73
Delhi	42.59	0.64
ACB (INDIA) LIMITED	40.33	0.61
Tamil Nadu	37.73	0.57
BHARAT ALUMINIUM COMPANY LTD	36.27	0.55
Jhabua Power Limited	35.50	0.53
ADANI WIND ENERGY KUTCHH FOUR Ltd. Nakhatrana	35.34	0.53
Maharashtra	33.20	0.50
Adani Green Energy Twenty Five B Limited_PSS-2	28.51	0.43
NTPC BARH Stage II	27.59	0.42
Rajasthan	26.67	0.40
NTPC Farakka stage I	26.35	0.40
Andhra Pradesh	25.43	0.38
ADANI RENEWABLE ENERGY HOLDING FOUR LIMITED	24.85	0.37
Chandigarh (UT)	24.71	0.37
Goa WR	23.73	0.36
Damodar Valley Corporation	23.42	0.35
Gujarat	22.56	0.34
Government of Himachal Pradesh_NJHPS	22.22	0.33
RENEW SURYA PRATAP PRIVATE LIMITED	21.91	0.33
D B Power Limited	21.60	0.33
Himachal Pradesh	19.55	0.29
ADANI SOLAR ENERGY JAISALMER TWO PRIVATE LIMITED(Project-2)	18.78	0.28
SEIL Energy India Limited Project II	18.15	0.27
NTPC BARH Stage I	17.42	0.26
KARCHAM WANGTOO HYDRO ELECTRIC PLANT.	16.91	0.25
Palatana Plant	16.91	0.25
ADANI SOLAR ENERGY RJ TWO PRIVATE LIMITED	16.83	0.25
COASTAL ENERGEN PRIVATE LIMITED	16.10	0.24
R.K.M POWERGEN PRIVATE LIMITED	15.22	0.23
ADANI GREEN ENERGY TWENTY FIVE LIMITED	14.95	0.22
AD HYDRO POWER LIMITED	14.70	0.22
Adani Green Energy Twenty Five A Limited_PSS-2	13.87	0.21
Uttarakhand	12.98	0.20
NTPC Dadri Stage I	12.72	0.19

ADANI RENEWABLE ENERGY FIFTY FIVE LIMITED_PSS-3 (162.5 MW Hybrid Solar of 187.5MW HPD)	11.58	0.17
Adani Green Energy Twenty Five B Limited_infirm	11.51	0.17
ADANI RENEWABLE ENERGY FORTY ONE LIMITED_PSS-3	11.45	0.17
SIMHAPURI ENERGY LIMITED	11.39	0.17
NTPC Sipat Stage I	11.35	0.17
NTPP BRBCL	10.66	0.16
IGSTPS JHAJJAR	10.59	0.16
Adept Renewable Technologies Private Limited	10.25	0.15
Jharkhand	9.62	0.14
NTPC Dadri Stage II	9.53	0.14
Dikchu Hydro Electric Project (Sneha Kinetic Power Projects Pvt. Ltd.)	9.49	0.14
Amp Energy Green Six Private Limited	9.38	0.14
Government of Himachal Pradesh_Koldam HEP	9.10	0.14
ReNew Surya Ravi Private Limited	8.92	0.13
NTPC Korba Stage I &II	7.52	0.11
TRN ENERGY PRIVATE LIMITED	7.19	0.11
ADANI SOLAR ENERGY JODHPUR TWO LIMITED	7.01	0.11
NTPC Talcher Stage I	6.70	0.10
NTPC Farakka stage III	6.65	0.10
Government of Himachal Pradesh_RampurHEP	6.62	0.10
Meghalaya	6.39	0.10
ADANI GREEN ENERGY TWENTY FIVE LIMITED_infirm	6.33	0.10
NTPC Vindhyachal Stage I	6.07	0.09
Jammu Kashmir	5.93	0.09
Adani Green Energy Twenty Five A Limited_Infirm	5.79	0.09
Telangana	5.65	0.09
ADANI RENEWABLE ENERGY FORTY ONE LIMITED_infirm	5.64	0.08
Adani Green Energy Twenty Six B Limited_PSS-2	5.50	0.08
ADANI GREEN ENERGY TWENTY FOUR LIMITED_infirm	5.48	0.08
SHREE CEMENT LIMITED TPS	5.18	0.08
NTPC Vindhyachal Stage III	5.15	0.08
NTPC Vindhyachal Stage IV	5.05	0.08
SKS Power Generation Chhattisgarh Limited	4.75	0.07
NTPC Sipat Stage II	4.67	0.07
Kerala	4.45	0.07
KANTI BIJLEE UTPADAN NIGAM LIMITED	4.43	0.07
Government of Himachal Pradesh _ Chamera1HEP	4.26	0.06
NTPC khargone	4.26	0.06
JUNIPER GREEN COSMIC PRIVATE LIMITED	4.12	0.06
Adani Green Energy Twenty Four A Limited_infirm	4.08	0.06
Singoli Bhatwari HEP	4.05	0.06
The Tata Power Co Ltd (MTPS)	4.00	0.06
NTPC Solapur	3.97	0.06
Sainj HEP	3.88	0.06
GMR Warora Energy Limited	3.86	0.06
NTPC Lara Stage I	3.80	0.06
Maruti Clean Coal and Power Limited	3.79	0.06
MB POWER (MADHYA PRADESH) LIMITED	3.50	0.05
WIND FIVE RENERGY LIMITED	3.25	0.05
ADANI RENEWABLE ENERGY FIFTY FIVE LIMITED_PSS3_infirm (162.5 MW Hybrid Solar of 187.5MW HPD)	3.24	0.05
KAMENG HYDRO POWER STATION	3.15	0.05
Government of Himachal Pradesh_ CHAMERA2HEP	3.14	0.05
NEPAL ELECTRICITY AUTHORITY MUZAFFARPUR	3.00	0.05
Nagaland	2.85	0.04
TPSL 200MW TPTCL Banderwala	2.72	0.04
NTPC Vindhyachal Stage II	2.65	0.04
NTPC Korba Stage III	2.61	0.04
Government of Himachal Pradesh _ Chamera3HEP	2.55	0.04

Adani Green Energy Twenty Six B Limited_infirm	2.32	0.03
AMBUJA CEMENTS LIMITED(Khavda PSS-3)_infirm	2.17	0.03
Punjab	2.09	0.03
RENEW SURYA OJAS PRIVATE LIMITED-Wind	2.04	0.03
NTPC Kahalgaon stage I	1.97	0.03
Government of Himachal Pradesh_Parbat3HEP	1.94	0.03
Adani Renewable Energy Forty Eight Limited(Wind)_infirm	1.86	0.03
Mizoram	1.84	0.03
IL&FS TAMIL NADU POWER COMPANY LIMITED	1.63	0.02
NTPC Gadarwara	1.53	0.02
NTPC Kahalgaon stage II	1.47	0.02
NTPC Vindhyaachal Stage V	1.46	0.02
AMBUJA CEMENTS LIMITED_PSS3	1.42	0.02
Sorang HEP (Himachal Sorang Power Pvt. Ltd.)	1.42	0.02
Tripura	1.38	0.02
GMR KAMALANGA ENERGY LTD-CTU	1.37	0.02
Transition Energy Services Private Limited	1.29	0.02
Adani Green Energy Twenty Four A Limited_PSS-3	1.16	0.02
NTPC Unchahar Stage I	1.07	0.02
Pondicherry UT	1.04	0.02
Government of Himachal Pradesh_BairasuilHEP	1.04	0.02
NTPC North Karanpura STPS	1.00	0.02
NTPC Unchahar Stage IV	0.96	0.01
ADANI WIND ENERGY KUTCHH FOUR Ltd. Nakhatrana (infirm)	0.92	0.01
Budhil HEP (Greenko Budhil Hydro Power Pvt. Ltd.)	0.92	0.01
NTPC KUDGI	0.83	0.01
NTPC Singrauli	0.69	0.01
Dhariwal ISTS	0.68	0.01
Bongaigaon Thermal Power Station NTPC	0.62	0.01
OSTRO KANNADA POWER PRIVATE LIMITED	0.62	0.01
TPSL Banderwala SECI 100_INF	0.55	0.01
NTPC Tanda Stage II	0.52	0.01
NTPC Unchahar Stage III	0.48	0.01
NTPC Darlipali	0.43	0.01
NTPC Mouda Stage II	0.41	0.01
AMP Energy Green Four Private Limited Infirm	0.35	0.01
Adani Renewable Energy Forty Eight Limited (Wind)_PSS-9	0.35	0.01
NTPC Unchahar Stage II	0.32	0.005
ADANI GREEN ENERGY TWENTY SIX A LIMITED_infirm	0.31	0.005
Ramagundam Floating solar	0.31	0.005
ADANI RENEWABLE ENERGY FIFTY FIVE LIMITED_PSS3_infirm (25 MW Hybrid Solar of 25 MW of 187.5MW HPD)	0.29	0.004
NTPC Mouda Stage I	0.28	0.004
Simhadri FSP 15 MW	0.20	0.003
NTPC Simhadri Stage II	0.20	0.003
NTPC SOLAPUR SOLAR PV Station	0.17	0.003
Sikkim	0.17	0.003
DHARIWAL STU OTH	0.15	0.002
ADANI GREEN ENERGY TWENTY SIX A LIMITED_PSS-3	0.14	0.002
ADANI RENEWABLE ENERGY FIFTY FIVE LIMITED_PSS3 (25 MW Hybrid Solar of 25 MW of 187.5MW HPD)	0.13	0.002
Simhadri Floating solar (10 MW)	0.13	0.002
NLC INDIA LIMITED NEYVELI NEW THERMAL POWER STATION	0.11	0.002
ADANI RENEWABLE ENERGY FIFTY FIVE LIMITED_PSS3_infirm (20.8 MW Hybrid Wind of 25 MW of 187.5MW HPD)	0.08	0.001
Serentica Renewables India 5 Private Limited	0.06	0.001
ADANI RENEWABLE ENERGY FIFTY FIVE LIMITED_PSS3 (20.8 MW Hybrid Wind of 25 MW of 187.5MW HPD)	0.04	0.001
NTPC Rihand stage II	0.02	0.0003
NTPC Rihand stage III	0.02	0.0003

NTPC Rihand stage I	0.02	0.0002
NLC Tamilnadu Power Limited	0.02	0.0002
NTPC Ramagundam Stage I &II	0.01	0.0002
NLC INDIA LIMITED THERMAL POWER STATION I EXPANSION	0.003	0.0001
NLC INDIA LIMITED THERMAL POWER STATION II STAGE II	0.001	0.00001
NTECL VALLUR	0.001	0.00001
NTPC Talcher Super Thermal Power Station Stage II	0.0005	0.00001
NLC INDIA LIMITED THERMAL POWER STATION II STAGE I	0.0002	0.000003
NTPC Telangana	0.0002	0.000002
NTPC Ramagundam Stage III	0.0001	0.000002
Total	6645.22	100.00
Volume sold by top 5 Regional Entities	2848.51	42.87
Herfindahl-Hirschman Index		0.0512

Source: NLDC

Table-21: VOLUME OF ELECTRICITY PURCHASED IN DAY AHEAD MARKET THROUGH POWER EXCHANGES, DECEMBER 2024

Name of the Entity	Volume of Purchase (MU)	% of Volume
Telangana	2325.82	35.00
Gujarat	885.93	13.33
Maharashtra	578.40	8.70
Andhra Pradesh	335.38	5.05
Uttar Pradesh	274.60	4.13
Tamil Nadu	253.47	3.81
Madhya Pradesh	227.01	3.42
Rajasthan	219.19	3.30
Jammu Kashmir	215.24	3.24
Druk Green Power Corporation Limited (DGPCL-Bhutan)	214.55	3.23
Delhi	185.53	2.79
Punjab	153.91	2.32
Uttarakhand	116.42	1.75
Karnataka	113.46	1.71
Kerala	102.26	1.54
ArcelorMittal Nippon Steel India Limited	101.28	1.52
Meghalaya	55.94	0.84
Odisha	44.55	0.67
Daman and Diu - Dadra and Nagar Haveli	41.22	0.62
Himachal Pradesh	36.45	0.55
NEPAL ELECTRICITY AUTHORITY MUZAFFARPUR	35.97	0.54
West Bengal	33.21	0.50
Damodar Valley Corporation	19.28	0.29
Haryana	18.36	0.28
SKS Power Generation Chhattisgarh Limited	16.34	0.25
North Central Railway Prayagraj	8.32	0.13
Jharkhand	7.94	0.12
NEPAL ELECTRICITY AUTHORITY TANAKPUR	7.22	0.11
MB POWER (MADHYA PRADESH) LIMITED	5.26	0.08
Nagaland	4.91	0.07
Chandigarh	4.34	0.07
Sikkim	1.30	0.02
Goa SR	0.57	0.01
Goa WR	0.45	0.01
Bihar	0.43	0.01
Tripura	0.35	0.01
Manipur	0.23	0.003
Mizoram	0.08	0.001
Pondicherry	0.04	0.001
Chhattisgarh	0.03	0.0004
TOTAL	6645.22	100.00
Volume purchased by top 5 Regional Entities	4400.14	66.22
Herfindahl-Hirschman Index		0.1606

Source: NLDC

Table-22: VOLUME OF ELECTRICITY SOLD IN GREEN DAY AHEAD MARKET THROUGH POWER EXCHANGES, DECEMBER 2024

Name of the Entity	Volume of Sale (MU)	% of Volume
Karnataka	332.89	43.10
ADANI RENEWABLE ENERGY HOLDING FOUR LIMITED	40.84	5.29
ADANI RENEWABLE ENERGY HOLDING FOUR LIMITED_PSS-1	30.65	3.97
Madhya Pradesh	30.51	3.95
ADANI WIND ENERGY KUTCHH FOUR Ltd. Nakhatrana	30.38	3.93
ADANI RENEWABLE ENERGY FORTY ONE LIMITED_PSS-3	20.13	2.61
Adani Green Energy Twenty Five B Limited_infirm	19.48	2.52
Uttar Pradesh	19.26	2.49
ADANI SOLAR ENERGY RJ TWO PRIVATE LIMITED	16.70	2.16
Adani Green Energy Twenty Five B Limited_PSS-2	15.62	2.02
Himachal Pradesh	14.22	1.84
Bihar	12.59	1.63
ADANI GREEN ENERGY TWENTY FIVE LIMITED_infirm	12.32	1.60
Jammu Kashmir	11.78	1.53
Maharashtra	11.71	1.52
Adani Green Energy Twenty Five A Limited_Infirm	9.72	1.26
ADANI GREEN ENERGY TWENTY FIVE LIMITED	8.72	1.13
Adani Green Energy Twenty Five A Limited_PSS-2	8.61	1.11
ADANI RENEWABLE ENERGY FIFTY FIVE LIMITED_PSS-3 (162.5 MW Hybrid Solar of 187.5MW HPD)	8.20	1.06
RENEW SURYA OJAS PRIVATE LIMITED-Wind	7.93	1.03
ADANI RENEWABLE ENERGY FORTY ONE LIMITED_infirm	7.45	0.96
Andhra Pradesh	7.21	0.93
Sorang HEP (Himachal Sorang Power Pvt. Ltd.))	6.63	0.86
Sikkim	6.17	0.80
CONTINUUM POWER TRADING (TN) PRIVATE LIMITED	5.95	0.77
ADANI RENEWABLE ENERGY FIFTY FIVE LIMITED_PSS3_infirm (162.5 MW Hybrid Solar of 187.5MW HPD)	5.91	0.76
Rajasthan	5.66	0.73
TPSL 200MW TPTCL Banderwala	5.55	0.72
ADANI GREEN ENERGY TWENTY FOUR LIMITED_infirm	4.66	0.60
Adani Green Energy Twenty Four A Limited_infirm	4.51	0.58
Singoli Bhatwari HEP	4.41	0.57
Adani Renewable Energy Forty Eight Limited(Wind)_infirm	4.03	0.52
Adani Green Energy Twenty Six B Limited_infirm	3.90	0.51
ADANI SOLAR ENERGY JAISALMER TWO PRIVATE LIMITED(Project-2)	3.57	0.46
Telangana	3.31	0.43
Adani Green Energy Twenty Six B Limited_PSS-2	3.23	0.42
OSTRO KANNADA POWER PRIVATE LIMITED	2.97	0.38
AMBUJA CEMENTS LIMITED(Khavda PSS-3)_infirm	2.84	0.37
AMBUJA CEMENTS LIMITED_PSS3	2.57	0.33
ReNew Surya Ravi Private Limited	2.44	0.32
WIND FIVE RENERGY LIMITED	2.40	0.31
ACME PHALODI SOLAR ENERGY PRIVATE LIMITED_INFIRM	1.62	0.21
Meghalaya	1.60	0.21

Uttarakhand	1.54	0.20
TPSL Banderwala SECI 100_INF	1.52	0.20
ADANI SOLAR ENERGY JODHPUR TWO LIMITED	1.28	0.17
Haryana	1.20	0.16
ADANI WIND ENERGY KUTCHH FOUR Ltd. Nakhatrana (infirm)	1.04	0.13
SEMBCORP GREEN INFRA PRIVATE LIMITED (INFIRM)	0.80	0.10
West Bengal	0.71	0.09
ADANI GREEN ENERGY TWENTY SIX A LIMITED_infirm	0.44	0.06
ACME RAISAR SOLAR ENERGY PRIVATE LIMITED_INFIRM	0.44	0.06
ADANI RENEWABLE ENERGY FIFTY FIVE LIMITED_PSS3_infirm (25 MW Hybrid Solar of 25 MW of 187.5MW HPD)	0.40	0.05
Simhadri FSP 15 MW	0.33	0.04
Ramagundam Floating solar	0.28	0.04
NTPC SOLAPUR SOLAR PV Station	0.21	0.03
JUNIPER GREEN COSMIC PRIVATE LIMITED	0.19	0.03
Simhadri Floating solar (10 MW)	0.19	0.02
Serentica Renewables India 5 Private Limited	0.17	0.02
Adani Green Energy Twenty Four A Limited_PSS-3	0.16	0.02
Adani Renewable Energy Forty Eight Limited (Wind)_PSS-9	0.14	0.02
ADANI RENEWABLE ENERGY FIFTY FIVE LIMITED_PSS3 (25 MW Hybrid Solar of 25 MW of 187.5MW HPD)	0.12	0.02
ADANI RENEWABLE ENERGY FIFTY FIVE LIMITED_PSS3 (20.8 MW Hybrid Wind of 25 MW of 187.5MW HPD)	0.09	0.01
AMP Energy Green Four Private Limited_Infirm	0.08	0.01
ADANI GREEN ENERGY TWENTY SIX A LIMITED_PSS-3	0.07	0.01
ADANI RENEWABLE ENERGY FIFTY FIVE LIMITED_PSS3_infirm (20.8 MW Hybrid Wind of 25 MW of 187.5MW HPD)	0.07	0.01
Total	772.34	100.00
Volume sold by top 5 Regional Entities	465.27	60.24
Herfindahl-Hirschman Index		0.1989

Source: NLDC

Table-23: VOLUME OF ELECTRICITY PURCHASED IN GREEN DAY AHEAD MARKET THROUGH POWER EXCHANGES, DECEMBER 2024

Name of the Entity	Volume of Purchase (MU)	% of Volume
Damodar Valley Corporation	151.99	19.68
Maharashtra	108.71	14.08
ArcelorMittal Nippon Steel India Limited	99.54	12.89
Tamil Nadu	84.18	10.90
Odisha	69.96	9.06
Haryana	53.50	6.93
Gujarat	52.08	6.74
Jharkhand	38.25	4.95
Karnataka	21.00	2.72
Delhi	16.04	2.08
Telangana	15.86	2.05
Kerala	13.18	1.71
Madhya Pradesh	9.73	1.26
Uttar Pradesh	9.69	1.25
Andhra Pradesh	9.67	1.25
Punjab	7.90	1.02
Goa SR	4.24	0.55
Goa WR	2.70	0.35
West Bengal	2.17	0.28
North Central Railway Prayagraj	1.15	0.15
Pondicherry UT	0.42	0.06
Uttarakhand	0.23	0.03
Daman and Diu - Dadra and Nagar Haveli	0.10	0.01
Meghalaya	0.05	0.01
TOTAL	772.34	100.00
Volume purchased by top 5 Regional Entities	514.38	66.60
Herfindahl-Hirschman Index		0.1095

Source: NLDC

Table-24: VOLUME OF ELECTRICITY SOLD IN HIGH PRICE DAY AHEAD MARKET THROUGH POWER EXCHANGES, DECEMBER 2024

Name of the Entity	Volume of Sale (MU)	% of Volume
No Trade	0.00	-
TOTAL	0.00	0.00
Volume sold by top 5 Regional Entities	0.00	-
Herfindahl-Hirschman Index		-

Source: NLDC

Table-25: VOLUME OF ELECTRICITY PURCHASED IN HIGH PRICE DAY AHEAD MARKET THROUGH POWER EXCHANGES, DECEMBER 2024

Name of the Entity	Volume of Purchase (MU)	% of Volume
No Trade	0.00	-
TOTAL	0.00	0.00
Volume purchased by top 5 Regional Entities	0.00	-
Herfindahl-Hirschman Index		-

Source: NLDC

Table-26: VOLUME OF ELECTRICITY SOLD IN REAL TIME MARKET THROUGH POWER EXCHANGES, DECEMBER 2024

Name of the Entity	Volume of Sale (MU)	% of Volume
Bihar	461.24	14.49
Tamil Nadu	242.17	7.61
Madhya Pradesh	196.27	6.16
Uttar Pradesh	185.18	5.82
West Bengal	176.08	5.53
Haryana	173.77	5.46
Odisha	167.28	5.25
Jharkhand	95.24	2.99
Chhattisgarh	90.41	2.84
Assam	82.12	2.58
Rajasthan	68.21	2.14
Delhi	48.13	1.51
Karnataka	44.67	1.40
Maharashtra	43.27	1.36
KHURJA STPP	41.33	1.30
Damodar Valley Corporation	34.11	1.07
BHARAT ALUMINIUM COMPANY LTD	32.15	1.01
TRN ENERGY PRIVATE LIMITED	27.32	0.86
ADANI WIND ENERGY KUTCHH FOUR Ltd. Nakhatrana	24.57	0.77
Jhabua Power Limited	23.72	0.75
ReNew Surya Ravi Private Limited	23.43	0.74
Jindal Power Limited, Stage-2	23.42	0.74
NTPC Singrauli	20.87	0.66
MAHAN ENERGEN LIMITED U#1	19.81	0.62
Uttarakhand	19.78	0.62
Tripura	18.91	0.59
SEIL ENERGY INDIA LIMITED	18.84	0.59
ACME PHALODI SOLAR ENERGY PRIVATE LIMITED_INFIRM	18.27	0.57
NABINAGAR POWER GENERATING COMPANY LIMITED	18.12	0.57
Sasan Power Limited	17.87	0.56
Jammu Kashmir	17.44	0.55
Adani Power Limited-Raipur TPP	17.40	0.55
Pondicherry UT	17.16	0.54
Gujarat	16.73	0.53
NTPC Rihand stage III	16.57	0.52
NTPC North Karanpura STPS	16.01	0.50
ADANI RENEWABLE ENERGY FORTY ONE LIMITED_PSS-3	15.62	0.49
Andhra Pradesh	14.85	0.47
The Tata Power Co Ltd (MTPS)	14.28	0.45
Telangana	13.48	0.42
Jindal Power Limited, Stage-1	13.30	0.42
RENEW SURYA PRATAP PRIVATE LIMITED	12.59	0.40
ACME RAISAR SOLAR ENERGY PRIVATE LIMITED_INFIRM	12.59	0.40
NTPC Kahalgaon stage II	12.43	0.39
NTPC Rihand stage I	12.42	0.39
NTPC Rihand stage II	12.35	0.39
Kerala	12.31	0.39
NTPC Farakka stage I	12.27	0.39
JUNIPER GREEN COSMIC PRIVATE LIMITED	11.67	0.37
AGARTALA GAS BASED POWER STATION	11.59	0.36
NTPC Darlipali	11.26	0.35
NTPC Mouda Stage II	10.20	0.32
NTPC Korba Stage I &II	10.18	0.32

Himachal Pradesh	9.95	0.31
NTPC BARH Stage II	8.97	0.28
COASTAL ENERGEN PRIVATE LIMITED	8.77	0.28
Adani Power Limited - Raigarh TPP	8.72	0.27
SKS Power Generation Chhattisgarh Limited	8.67	0.27
NTPC khargone	8.56	0.27
Serentica Renewables India 5 Private Limited	8.24	0.26
NTPC Vindhyachal Stage I	8.01	0.25
NTPC Gadarwara	7.90	0.25
SEIL Energy India Limited Project II	7.64	0.24
KAMENG HYDRO POWER STATION	7.58	0.24
ADANI RENEWABLE ENERGY HOLDING FOUR LIMITED_PSS-1	7.50	0.24
NTPC Vindhyachal Stage IV	7.04	0.22
NTPC Vindhyachal Stage III	6.93	0.22
Transition Sustainable Energy Services One Private Limited	6.90	0.22
Punjab	6.86	0.22
NTPC Kahalgaon stage I	6.86	0.22
NTPC BARH Stage I	6.79	0.21
NTPC Dadri Stage I	6.71	0.21
ADANI RENEWABLE ENERGY FORTY ONE LIMITED_infirm	6.65	0.21
Transition Energy Services Private Limited	6.52	0.20
NLC INDIA LIMITED NEYVELI NEW THERMAL POWER STATION	6.50	0.20
Jindal India Power Limited	6.46	0.20
NTPC Lara Stage I	6.43	0.20
NREL-Dayapar Wind	6.28	0.20
NEPAL ELECTRICITY AUTHORITY MUZAFFARPUR	6.18	0.19
NTPC Mouda Stage I	6.14	0.19
Adept Renewable Technologies Private Limited	5.74	0.18
Amp Energy Green Six Private Limited	5.66	0.18
NTPC Telangana	5.40	0.17
OSTRO KANNADA POWER PRIVATE LIMITED	5.19	0.16
Government of Himachal Pradesh_NJHPS	5.11	0.16
NTPP BRBCL	4.76	0.15
NTPC Vindhyachal Stage II	4.34	0.14
RENEW SURYA OJAS PRIVATE LIMITED-Wind	4.34	0.14
Singoli Bhatwari HEP	4.30	0.13
NTPC Ramagundam Stage I &II	4.13	0.13
NTECL VALLUR	4.10	0.13
NTPC KUDGI	3.96	0.12
NTPC Farakka stage III	3.91	0.12
ACB (INDIA) LIMITED	3.91	0.12
D B Power Limited	3.89	0.12
Arunachal Pradesh	3.89	0.12
NTPC Vindhyachal Stage V	3.88	0.12
NTPC Solapur	3.68	0.12
NTPC Unchahar Stage IV	3.62	0.11
IGSTPS JHAJJAR	3.59	0.11
NTPC Korba Stage III	3.52	0.11
Adani Green Energy Twenty Five B Limited_PSS-2	3.46	0.11
MAHAN ENERGEN LIMITED U#2	3.30	0.10
GMR Warora Energy Limited	3.27	0.10
Manipur	3.25	0.10
R.K.M POWERGEN PRIVATE LIMITED	3.07	0.10
NTPC Tanda Stage II	2.98	0.09
NTPC Dadri Stage II	2.98	0.09
Sikkim	2.92	0.09
Onevolt Energy Private Limited	2.62	0.08

Government of Himachal Pradesh_Koldam HEP	2.56	0.08
SEBPCORP GREEN INFRA PRIVATE LIMITED (INFIRM)	2.53	0.08
SHREE CEMENT LIMITED TPS	2.51	0.08
KARCHAM WANGTOO HYDRO ELECTRIC PLANT.	2.38	0.07
MB POWER (MADHYA PRADESH) LIMITED	2.33	0.07
Palatana Plant	2.32	0.07
NLC Tamilnadu Power Limited	2.24	0.07
IND BARATH ENERGY UTKAL LIMITED	2.24	0.07
Jaypee Nigrie Super Thermal Power Plant	2.23	0.07
Bongaigaon Thermal Power Station NTPC	2.19	0.07
MAITHON POWER LIMITED	2.18	0.07
Ramagundam Floating solar	2.08	0.07
Goa WR	2.05	0.06
ADANI RENEWABLE ENERGY HOLDING FOUR LIMITED	1.95	0.06
NTPC Unchahar Stage I	1.91	0.06
Adani Renewable Energy Forty Eight Limited(Wind)_infirm	1.89	0.06
ASSAM GAS BASED POWER STATION	1.83	0.06
NTPC Simhadri Stage II	1.81	0.06
Dhariwal ISTS	1.80	0.06
Adani Green Energy Twenty Five A Limited_PSS-2	1.73	0.05
SIMHAPURI ENERGY LIMITED	1.68	0.05
Grian Energy Private Limited	1.68	0.05
Jindal Steel & Power Ltd , DCPD	1.67	0.05
NTPC Unchahar Stage II	1.60	0.05
KANTI BIJLEE UTPADAN NIGAM LIMITED	1.57	0.05
NLC INDIA LIMITED THERMAL POWER STATION I EXPANSION	1.56	0.05
Government of Himachal Pradesh_RampurHEP	1.52	0.05
TPSL Banderwala SECI 100_INF	1.40	0.04
Chandigarh (UT)	1.40	0.04
Nagaland	1.36	0.04
Adani Renewable Energy Forty Eight Limited (Wind)_PSS-9	1.32	0.04
ADANI SOLAR ENERGY RJ TWO PRIVATE LIMITED	1.24	0.04
NTPC Unchahar Stage III	1.22	0.04
Adani Green Energy Twenty Five B Limited_infirm	1.19	0.04
ADHUNIK POWER & NATURAL RESOURCES LIMITED	1.19	0.04
Transition Green Energy Private Limited	1.14	0.04
LANCO AMARKANTAK POWER LIMITED	1.13	0.04
ADANI SOLAR ENERGY JAISALMER TWO PRIVATE LIMITED(Project-2)	1.13	0.04
Serentica Renewables India 4 Private Limited	1.09	0.03
TPSL 200MW TPTCL Banderwala	1.08	0.03
ADANI GREEN ENERGY TWENTY FIVE LIMITED	1.07	0.03
NLC INDIA LIMITED THERMAL POWER STATION II STAGE II	1.03	0.03
Government of Himachal Pradesh_ CHAMERA2HEP	1.02	0.03
RENEW SURYA ROSHNI PRIVATE LIMITED Koppal PS	1.01	0.03
ADANI GREEN ENERGY TWENTY FOUR LIMITED_infirm	0.98	0.03
Meghalaya	0.97	0.03
Sorang HEP (Himachal Sorang Power Pvt. Ltd.)	0.96	0.03
Sainj HEP	0.93	0.03
NTPC SAIL POWER COMPANY LIMITED	0.91	0.03
NLC INDIA LIMITED THERMAL POWER STATION II STAGE I	0.90	0.03
Government of Himachal Pradesh_ Chamera I HEP	0.90	0.03
Amplus Ages Private Limited	0.88	0.03
NLC INDIA LIMITED THERMAL POWER STATION II EXPANSION	0.86	0.03
Serentica Renewables India 1 Private Limited- Koppal (Infirm)	0.84	0.03
Adani Green Energy Twenty Four A Limited_PSS-3	0.81	0.03
Simhadri FSP 15 MW	0.81	0.03

NTPC Ramagundam Stage III	0.73	0.02
NTPC SOLAPUR SOLAR PV Station	0.70	0.02
Adani Green Energy Twenty Six B Limited_PSS-2	0.64	0.02
Government of Himachal Pradesh _ Chamera3HEP	0.64	0.02
ADANI GREEN ENERGY TWENTY FIVE LIMITED_infirm	0.59	0.02
AD HYDRO POWER LIMITED	0.51	0.02
Simhadri Floating solar (10 MW)	0.51	0.02
Serentica Renewables India 5 Private Limited- Infirm	0.41	0.01
GMR KAMALANGA ENERGY LTD-CTU	0.38	0.01
Daman and Diu - Dadra and Nagar Haveli	0.36	0.01
ADANI RENEWABLE ENERGY FIFTY FIVE LIMITED_PSS-3 (162.5 MW Hybrid Solar of 187.5MW HPD)	0.33	0.01
ADANI SOLAR ENERGY JODHPUR TWO LIMITED	0.33	0.01
Serentica Renewables India 1 Private Limited	0.32	0.01
RENEW SURYA ROSHNI PRIVATE LIMITED-Fatehgarh-III PS	0.29	0.01
Government of Himachal Pradesh_BairasuilHEP	0.26	0.01
Government of Himachal Pradesh_Parbati3HEP	0.23	0.01
DHARIWAL STU OTH	0.20	0.01
Maruti Clean Coal and Power Limited	0.19	0.01
AMP Energy Green Four Private Limited_infirm	0.18	0.01
ADANI RENEWABLE ENERGY FIFTY FIVE LIMITED_PSS3_infirm (162.5 MW Hybrid Solar of 187.5MW HPD)	0.17	0.005
Budhil HEP (Greenko Budhil Hydro Power Pvt. Ltd.)	0.16	0.005
IL&FS TAMIL NADU POWER COMPANY LIMITED	0.14	0.004
ADANI RENEWABLE ENERGY FIFTY FIVE LIMITED_PSS3 (20.8 MW Hybrid Wind of 25 MW of 187.5MW HPD)	0.13	0.004
ADANI RENEWABLE ENERGY FIFTY FIVE LIMITED_PSS3 (25 MW Hybrid Solar of 25 MW of 187.5MW HPD)	0.13	0.004
Adani Green Energy Twenty Four A Limited_infirm	0.11	0.003
NEPAL ELECTRICITY AUTHORITY TANAKPUR	0.09	0.003
Dikchu Hydro Electric Project (Sneha Kinetic Power Projects Pvt. Ltd.)	0.06	0.002
ADANI GREEN ENERGY TWENTY SIX A LIMITED_PSS-3	0.06	0.002
JORETHANG LOOP HEP, DANS ENERGY PRIVATE LIMITED	0.05	0.001
NTPC Simhadri Stage I	0.05	0.001
Tashiding HEP, Shiga Energy Private Limited	0.04	0.001
Chuzachen HEP	0.04	0.001
ADANI RENEWABLE ENERGY FIFTY FIVE LIMITED_PSS3_infirm (25 MW Hybrid Solar of 25 MW of 187.5MW HPD)	0.03	0.001
Goa SR	0.02	0.001
KSK MAHANADI POWER COMPANY LIMITED	0.02	0.001
Total	3183.73	100.00
Volume sold by top 5 Regional Entities	1260.94	39.61
Herfindahl-Hirschman Index		0.0478

Source: NLDC

Table-27: VOLUME OF ELECTRICITY PURCHASED IN REAL TIME MARKET THROUGH POWER EXCHANGES, DECEMBER 2024

Name of the Entity	Volume of Purchase (MU)	% of Volume
Telangana	543.62	17.07
Punjab	469.59	14.75
Maharashtra	379.46	11.92
Tamil Nadu	197.01	6.19
Rajasthan	188.90	5.93
Uttar Pradesh	184.76	5.80
Andhra Pradesh	179.04	5.62
Jammu Kashmir	126.09	3.96
Kerala	123.93	3.89
Gujarat	98.00	3.08
Odisha	82.21	2.58
Delhi	73.78	2.32
Karnataka	65.97	2.07
Himachal Pradesh	64.72	2.03
Assam	45.01	1.41
Madhya Pradesh	41.15	1.29
West Bengal	36.26	1.14
Damodar Valley Corporation	35.01	1.10
Daman and Diu - Dadra and Nagar Haveli	32.91	1.03
ArcelorMittal Nippon Steel India Limited	27.93	0.88
NEPAL ELECTRICITY AUTHORITY MUZAFFARPUR	23.60	0.74
Uttarakhand	20.36	0.64
Adani Power Limited - Raigarh TPP	15.60	0.49
Manipur	14.34	0.45
Meghalaya	13.69	0.43
Chhattisgarh	11.68	0.37
Haryana	11.17	0.35
Arunachal Pradesh	8.94	0.28
Jindal Power Limited, Stage-2	8.66	0.27
Druk Green Power Corporation Limited (DGPCL-Bhutan)	8.29	0.26
SKS Power Generation Chhattisgarh Limited	7.44	0.23
NEPAL ELECTRICITY AUTHORITY TANAKPUR	5.92	0.19
MAHAN ENERGEN LIMITED U#1	5.58	0.18
SIMHAPURI ENERGY LIMITED	4.46	0.14
Jharkhand	3.92	0.12
MB POWER (MADHYA PRADESH) LIMITED	3.11	0.10
Tripura	2.69	0.08
IND BARATH ENERGY UTKAL LIMITED	2.42	0.08
Ratnagiri Gas & Power Private Limited	2.17	0.07
Nagaland	1.87	0.06
Goa WR	1.86	0.06
COASTAL ENERGEN PRIVATE LIMITED	1.60	0.05
Jindal Power Limited, Stage-1	1.35	0.04
Bihar	0.97	0.03
North Central Railway Prayagraj	0.89	0.03
Government of Himachal Pradesh_NJHPS	0.70	0.02
Kawas	0.66	0.02
Goa SR	0.60	0.02

Government of Himachal Pradesh_Koldam HEP	0.55	0.02
Gandhar	0.54	0.02
Chandigarh (UT)	0.47	0.01
Sikkim	0.46	0.01
Government of Himachal Pradesh_ CHAMERA2HEP	0.42	0.01
Government of Himachal Pradesh_Parbati3HEP	0.40	0.01
Pondicherry UT	0.23	0.01
Government of Himachal Pradesh_RampurHEP	0.21	0.007
Mizoram	0.14	0.004
Maruti Clean Coal and Power Limited	0.13	0.004
Government of Himachal Pradesh _ Chamera3HEP	0.12	0.004
Government of Himachal Pradesh _ Chamera1HEP	0.07	0.002
Government of Himachal Pradesh_BairasuilHEP	0.05	0.002
Sainj HEP	0.04	0.001
TOTAL	3183.73	100.00
Volume purchased by top 5 Regional Entities	1778.58	55.86
Herfindahl-Hirschman Index		0.0861

Source: NLDC

**Table-28: TOTAL VOLUME OF NET SHORT-TERM TRANSACTIONS (REGIONAL ENTITY-WISE),
DECEMBER 2024**

S. No.	Name of the Entity	Total volume of net short-term transactions of electricity*
1	Telangana	2717.63
2	Maharashtra	1269.65
3	Gujarat	1247.13
4	Rajasthan	1120.55
5	Madhya Pradesh	1001.61
6	Jammu Kashmir	746.71
7	Tamil Nadu	669.15
8	Kerala	598.15
9	Andhra Pradesh	476.57
10	HIMACHAL PRADESH	465.46
11	Uttarakhand	398.16
12	ArcelorMittal Nippon Steel India Limited	228.75
13	Druk Green Power Corporation Limited (DGPCL-Bhutan)	222.84
14	Punjab	145.94
15	Delhi	108.14
16	Meghalaya	92.39
17	Damodar Valley Corporation	77.04
18	Daman and Diu - Dadra and Nagar Haveli	75.03
19	NEPAL ELECTRICITY AUTHORITY MUZAFFARPUR	50.40
20	BHARAT ALUMINIUM COMPANY LTD (Bulk Consumer)	24.70
21	NEA - Bihar STU	18.54
22	Goa SR	16.22
23	NEPAL ELECTRICITY AUTHORITY TANAKPUR	13.05
24	Manipur	11.31
25	North Central Railway Prayagraj	10.36
26	AMNSIL_WR_State	8.95
27	NEPAL_NR	6.92
28	Nagaland	2.59
29	Arunachal Pradesh	2.553
30	Sikkim	1.70
31	Kawas	0.66
32	Gandhar	0.54
33	Ratnagiri Gas & Power Private Limited	0.37
34	NTPC Talcher Super Thermal Power Station Stage II	-0.0005
35	KSK MAHANADI POWER COMPANY LIMITED	-0.02
36	Chuzachen HEP	-0.04
37	Tashiding HEP, Shiga Energy Private Limited	-0.04
38	NTPC Simhadri Stage I	-0.05
39	JORETHANG LOOP HEP, DANS ENERGY PRIVATE LIMITED	-0.05
40	ADANI RENEWABLE ENERGY FIFTY FIVE LIMITED_PSS3_infirm (20.8 MW Hybrid Wind of 25 MW of 187.5MW HPD)	-0.15
41	ADANI RENEWABLE ENERGY FIFTY FIVE LIMITED_PSS3 (20.8 MW Hybrid Wind of 25 MW of 187.5MW HPD)	-0.27
42	ADANI GREEN ENERGY TWENTY SIX A LIMITED_PSS-3	-0.28
43	RENEW SURYA ROSHNI PRIVATE LIMITED-Fatehgarh-III PS	-0.29
44	ADANI RENEWABLE ENERGY FIFTY FIVE LIMITED_PSS3 (25 MW Hybrid Solar of 25 MW of 187.5MW HPD)	-0.38
45	Serentica Renewables India 5 Private Limited- Infirm	-0.41
46	AMP Energy Green Four Private Limited_Infirm	-0.61
47	ADANI RENEWABLE ENERGY FIFTY FIVE LIMITED_PSS3_infirm (25 MW Hybrid Solar of 25 MW of 187.5MW HPD)	-0.72
48	NTPC Ramagundam Stage III	-0.73
49	ADANI GREEN ENERGY TWENTY SIX A LIMITED_infirm	-0.75
50	Simhadri Floating solar (10 MW)	-0.82
51	Serentica Renewables India 1 Private Limited- Koppal (Infirm)	-0.84
52	NLC INDIA LIMITED THERMAL POWER STATION II EXPANSION	-0.86
53	Amplus Ages Private Limited	-0.88
54	NLC INDIA LIMITED THERMAL POWER STATION II STAGE I	-0.90
55	NTPC SAIL POWER COMPANY LIMITED	-0.91
56	RENEW SURYA ROSHNI PRIVATE LIMITED Koppal PS	-1.01
57	NLC INDIA LIMITED THERMAL POWER STATION II STAGE II	-1.03
58	Budhil HEP (Greenko Budhil Hydro Power Pvt. Ltd.)	-1.08

59	NTPC SOLAPUR SOLAR PV Station	-1.09
60	Serentica Renewables India 4 Private Limited	-1.09
61	Goa WR	-1.11
62	LANCO AMARKANTAK POWER LIMITED	-1.13
63	Transition Green Energy Private Limited	-1.14
64	ADHUNIK POWER & NATURAL RESOURCES LIMITED	-1.19
65	Government of Himachal Pradesh_BairasuiIHEP	-1.25
66	Simhadri FSP 15 MW	-1.34
67	NLC INDIA LIMITED THERMAL POWER STATION I EXPANSION	-1.56
68	Mizoram	-1.62
69	Grian Energy Private Limited	-1.68
70	NTPC Unchahar Stage III	-1.70
71	GMR KAMALANGA ENERGY LTD-CTU	-1.75
72	Government of Himachal Pradesh_Parbat3HEP	-1.76
73	IL&FS TAMIL NADU POWER COMPANY LIMITED	-1.76
74	Adani Renewable Energy Forty Eight Limited (Wind)_PSS-9	-1.80
75	ASSAM GAS BASED POWER STATION	-1.83
76	IRCON RENEWABLE POWER LIMITED Infirm	-1.85
77	NTPC Unchahar Stage II	-1.92
78	ADANI WIND ENERGY KUTCHH FOUR Ltd. Nakhatrana (infirm)	-1.96
79	NTPC Simhadri Stage II	-2.01
80	Adani Green Energy Twenty Four A Limited_PSS-3	-2.14
81	MAITHON POWER LIMITED	-2.18
82	NLC Tamilnadu Power Limited	-2.26
83	Bongaigaon Thermal Power Station NTPC	-2.82
84	NTPC Unchahar Stage I	-2.98
85	Onevolt Energy Private Limited	-3.06
86	Government of Himachal Pradesh _ Chamera3HEP	-3.07
87	SEBMCORP GREEN INFRA PRIVATE LIMITED (INFIRM)	-3.33
88	NTPC Tanda Stage II	-3.51
89	Government of Himachal Pradesh_ CHAMERA2HEP	-3.74
90	NTECL VALLUR	-4.10
91	NTPC Ramagundam Stage I &II	-4.14
92	AMBUJA CEMENTS LIMITED_PSS3	-4.29
93	NTPC Unchahar Stage IV	-4.58
94	NTPC Sipat Stage II	-4.67
95	Sainj HEP	-4.77
96	Government of Himachal Pradesh _ Chamera1HEP	-5.09
97	NTPC Vindhyachal Stage V	-5.34
98	NTPC Telangana	-5.40
99	AMBUJA CEMENTS LIMITED(Khavda PSS-3)_infirm	-5.52
100	WIND FIVE RENERGY LIMITED	-5.65
101	CONTINUUM POWER TRADING (TN) PRIVATE LIMITED	-5.95
102	KANTI BIJLEE UTPADAN NIGAM LIMITED	-6.00
103	NTPC Korba Stage III	-6.12
104	Adani Green Energy Twenty Six B Limited_infirm	-6.22
105	NREL-Dayapar Wind	-6.28
106	NTPC Mouda Stage I	-6.42
107	NLC INDIA LIMITED NEYVELI NEW THERMAL POWER STATION	-6.62
108	NTPC Talcher Stage I	-6.70
109	Transition Sustainable Energy Services One Private Limited	-6.90
110	TANAKPUR POWER STATION	-6.92
111	NTPC Vindhyachal Stage II	-7.00
112	NTPC KUDGI	-7.22
113	NTPC Solapur	-7.65
114	Adani Renewable Energy Forty Eight Limited(Wind)_infirm	-7.79
115	Transition Energy Services Private Limited	-7.82
116	Government of Himachal Pradesh_RampurHEP	-7.92
117	ADANI SOLAR ENERGY JODHPUR TWO LIMITED	-8.61
118	Adani Green Energy Twenty Four A Limited_infirm	-8.70
119	NTPC Kahalgaon stage I	-8.82
120	Serentica Renewables India 5 Private Limited	-9.15
121	Sorang HEP (Himachal Sorang Power Pvt. Ltd.)	-9.30
122	ADANI RENEWABLE ENERGY FIFTY FIVE LIMITED_PSS3_infirm (162.5 MW Hybrid Solar of 187.5MW HPD)	-9.32
123	Adani Green Energy Twenty Six B Limited_PSS-2	-9.37

124	NTPC Gadarwara	-9.43
125	IRCON RENEWABLE POWER LIMITED	-9.51
126	NTPC Lara Stage I	-10.23
127	Dikchu Hydro Electric Project (Sneha Kinetic Power Projects Pvt. Ltd.)	-10.43
128	NTPC Farakka stage III	-10.56
129	NTPC Mouda Stage II	-10.61
130	KAMENG HYDRO POWER STATION	-10.74
131	Government of Himachal Pradesh_Koldam HEP	-11.11
132	ADANI GREEN ENERGY TWENTY FOUR LIMITED_infirm	-11.12
133	NTPC Sipat Stage I	-11.35
134	AGARTALA GAS BASED POWER STATION	-11.59
135	Dhariwal ISTS	-11.68
136	NTPC Darlipali	-11.69
137	NTPC Vindhyachal Stage III	-12.08
138	NTPC Vindhyachal Stage IV	-12.09
139	NTPC Rihand stage II	-12.37
140	NTPC Rihand stage I	-12.43
141	NTPC Dadri Stage II	-12.51
142	Ramagundam Floating solar	-12.71
143	NTPC khargone	-12.82
144	ACME RAISAR SOLAR ENERGY PRIVATE LIMITED_INFIRM	-13.03
145	TPSL Banderwala SECI 100_INF	-13.12
146	NTPC Kahalgaon stage II	-13.91
147	NTPC Vindhyachal Stage I	-14.08
148	DHARIWAL STU OTH	-14.16
149	Chandigarh (UT)	-14.22
150	Singoli Bhatwari HEP	-14.25
151	RENEW SURYA OJAS PRIVATE LIMITED-Wind	-14.30
152	IGSTPS JHAJJAR	-14.43
153	Amp Energy Green Six Private Limited	-15.05
154	AD HYDRO POWER LIMITED	-15.21
155	NTPP BRBCL	-15.42
156	Adani Green Energy Twenty Five A Limited_infirm	-15.51
157	Adept Renewable Technologies Private Limited	-15.99
158	JUNIPER GREEN COSMIC PRIVATE LIMITED	-15.99
159	NTPC Rihand stage III	-16.59
160	OSTRO KANNADA POWER PRIVATE LIMITED	-16.64
161	NTPC North Karanpura STPS	-17.01
162	Tripura	-17.25
163	Pondicherry UT	-17.51
164	NTPC Korba Stage I &II	-17.70
165	TPSL 200MW TPTCL Banderwala	-17.80
166	Sasan Power Limited	-17.87
167	The Tata Power Co Ltd (MTPS)	-18.29
168	GMR Warora Energy Limited	-18.79
169	Palatana Plant	-19.23
170	ADANI GREEN ENERGY TWENTY FIVE LIMITED_infirm	-19.25
171	NTPC Dadri Stage I	-19.43
172	ADANI RENEWABLE ENERGY FORTY ONE LIMITED_infirm	-19.88
173	ACME PHALODI SOLAR ENERGY PRIVATE LIMITED_INFIRM	-19.89
174	ADANI RENEWABLE ENERGY FIFTY FIVE LIMITED_PSS-3 (162.5 MW Hybrid Solar of 187.5MW HPD)	-20.12
175	NTPC Singrauli	-21.56
176	KARCHAM WANGTOO HYDRO ELECTRIC PLANT.	-22.03
177	ADANI SOLAR ENERGY JAISALMER TWO PRIVATE LIMITED(Project-2)	-23.48
178	NTPC BARH Stage I	-24.21
179	Adani Green Energy Twenty Five A Limited_PSS-2	-24.21
180	ADANI GREEN ENERGY TWENTY FIVE LIMITED	-24.74
181	Serentica Renewables India 1 Private Limited	-25.37
182	Government of Himachal Pradesh_NJHPS	-26.63
183	Maruti Clean Coal and Power Limited	-29.97
184	Adani Green Energy Twenty Five B Limited_infirm	-32.18
185	SEIL Energy India Limited Project II	-33.71
186	RENEW SURYA PRATAP PRIVATE LIMITED	-34.50
187	ADANI SOLAR ENERGY RJ TWO PRIVATE LIMITED	-34.77
188	NTPC BARH Stage II	-36.56

189	NTPC Farakka stage I	-38.62
190	ReNew Surya Ravi Private Limited	-38.82
191	KHURJA STPP	-41.33
192	SHREE CEMENT LIMITED TPS	-45.18
193	Adani Green Energy Twenty Five B Limited PSS-2	-47.60
194	ADANI RENEWABLE ENERGY FORTY ONE LIMITED PSS-3	-49.32
195	R.K.M POWERGEN PRIVATE LIMITED	-52.90
196	Jharkhand	-54.00
197	COASTAL ENERGEN PRIVATE LIMITED	-60.66
198	TRN ENERGY PRIVATE LIMITED	-63.02
199	SIMHAPURI ENERGY LIMITED	-68.04
200	NABINAGAR POWER GENERATING COMPANY LIMITED	-70.07
201	ADANI RENEWABLE ENERGY HOLDING FOUR LIMITED	-74.37
202	BHARAT ALUMINIUM COMPANY LTD	-79.06
203	Jhabua Power Limited	-88.45
204	MB POWER (MADHYA PRADESH) LIMITED	-89.36
205	ADANI WIND ENERGY KUTCHH FOUR Ltd. Nakhatrana	-92.02
206	Jindal Steel & Power Ltd , DCPD	-100.46
207	ACB (INDIA) LIMITED	-101.70
208	ADANI RENEWABLE ENERGY HOLDING FOUR LIMITED PSS-1	-103.52
209	Jindal India Power Limited	-111.97
210	MAHAN ENERGEN LIMITED U#2	-118.38
211	RKM_POWER	-149.15
212	SEIL ENERGY INDIA LIMITED	-149.20
213	DHARIWAL STU MH	-156.24
214	D B Power Limited	-157.34
215	Karnataka	-169.09
216	MAHAN ENERGEN LIMITED U#1	-169.62
217	IND BARATH ENERGY UTKAL LIMITED	-176.96
218	Assam	-181.31
219	Jindal India Thermal Power Limited	-238.36
220	SKS Power Generation Chhattisgarh Limited	-263.89
221	Adani Power Limited - Raigarh TPP	-271.94
222	Jindal Power Limited, Stage-1	-276.49
223	Jaypee Nigrie Super Thermal Power Plant	-393.96
224	Haryana	-467.78
225	West Bengal	-556.34
226	Adani Power Limited-Raipur TPP	-575.96
227	Odisha	-652.30
228	Chhattisgarh	-759.63
229	Jindal Power Limited, Stage-2	-865.66
230	Bihar	-964.94
231	Uttar Pradesh	-1210.72
* Total volume of net short-term transactions of electricity includes net of transactions of electricity through bilateral and power exchanges		
(-) indicates sale and (+) indicates purchase		

Source: NLDC

Table-29: DETAILS OF CONGESTION IN POWER EXCHANGES, DECEMBER 2024

	Details of Congestion	Day Ahead Market			Green Day Ahead Market			High Price Day Ahead Market			Real Time Market		
		IEX	PXIL	HPX	IEX	PXIL	HPX	IEX	PXIL	HPX	IEX	PXIL	HPX
1	Unconstrained Cleared Volume (MU)	6643.13	1.81	0.28	772.34	0.00	0.00	0.00	0.00	0.00	3180.04	3.68	0.00
2	Actual Cleared Volume and hence scheduled (MU)	6643.13	1.81	0.28	772.34	0.00	0.00	0.00	0.00	0.00	3180.04	3.68	0.00
3	Volume of electricity that could not be cleared and hence not scheduled because of congestion (MU) *	0.00	0.00	0.00	0.00	0.00	0.00	0.00	0.00	0.00	0.00	0.00	0.00
4	Volume of electricity that could not be cleared and hence not scheduled because of reasons other than congestion (MU) **	0.00	0.00	0.00	0.00	0.00	0.00	0.00	0.00	0.00	0.00	0.00	0.00
5	Volume of electricity that could not be cleared as % to Unconstrained Cleared Volume	0.00%	0.00%	0.00%	0.00%	0.00%	0.00%	0.00%	0.00%	0.00%	0.00%	0.00%	0.00%
6	Percentage of the time congestion occurred during the month (Number of hours congestion occurred/ Total number of hours in the month)	0.00%	0.00%	0.00%	0.00%	0.00%	0.00%	0.00%	0.00%	0.00%	0.00%	0.00%	0.00%
7	Congestion occurrence (%) time block wise												
	0.00 - 6.00 hours	0.00%	0.00%	0.00%	0.00%	0.00%	0.00%	0.00%	0.00%	0.00%	0.00%	0.00%	0.00%
	6.00 - 12.00 hours	0.00%	0.00%	0.00%	0.00%	0.00%	0.00%	0.00%	0.00%	0.00%	0.00%	0.00%	0.00%
	12.00 - 18.00 hours	0.00%	0.00%	0.00%	0.00%	0.00%	0.00%	0.00%	0.00%	0.00%	0.00%	0.00%	0.00%
	18.00 - 24.00 hours	0.00%	0.00%	0.00%	0.00%	0.00%	0.00%	0.00%	0.00%	0.00%	0.00%	0.00%	0.00%

* This power would have been scheduled had there been no congestion

Source: IEX, PXIL, HPX & NLDC

Table-30: VOLUME OF SHORT TERM TRANSACTIONS OF ELECTRICITY (DAY-WISE) (MU), DECEMBER 2024

Date	Bilateral [^] (Traders, PX, Direct)	Day Ahead Market [#]			Green Day Ahead Market [#]			High Price DAM [#]			Real Time Market [#]			Total Electricity Generation (MU)*
		IEX	PXIL	HPX	IEX	PXIL	HPX	IEX	PXIL	HPX	IEX	PXIL	HPX	
1-Dec-24	147.08	173.10	0.00	0.00	28.56	0.00	0.00	0.00	0.00	0.00	132.93	0.00	0.00	3556.62
2-Dec-24	170.56	177.66	0.00	0.00	30.62	0.00	0.00	0.00	0.00	0.00	114.17	0.00	0.00	3688.60
3-Dec-24	174.49	178.67	0.00	0.00	27.43	0.00	0.00	0.00	0.00	0.00	115.82	0.00	0.00	3723.66
4-Dec-24	173.78	200.47	0.43	0.00	28.75	0.00	0.00	0.00	0.00	0.00	113.67	0.00	0.00	3783.65
5-Dec-24	178.09	191.07	0.00	0.00	32.73	0.00	0.00	0.00	0.00	0.00	111.76	0.00	0.00	3900.22
6-Dec-24	176.00	197.88	0.00	0.00	26.34	0.00	0.00	0.00	0.00	0.00	103.51	0.31	0.00	4000.69
7-Dec-24	172.91	178.42	0.00	0.00	22.68	0.00	0.00	0.00	0.00	0.00	109.68	0.00	0.00	3990.72
8-Dec-24	143.05	182.81	0.00	0.00	30.63	0.00	0.00	0.00	0.00	0.00	100.63	0.00	0.00	3756.85
9-Dec-24	173.04	197.83	0.00	0.00	24.94	0.00	0.00	0.00	0.00	0.00	101.88	0.00	0.00	3834.23
10-Dec-24	178.44	213.42	0.00	0.00	27.91	0.00	0.00	0.00	0.00	0.00	95.01	0.25	0.00	3873.11
11-Dec-24	181.82	211.52	0.02	0.00	26.42	0.00	0.00	0.00	0.00	0.00	90.43	0.10	0.00	3885.25
12-Dec-24	173.70	222.66	0.01	0.00	28.45	0.00	0.00	0.00	0.00	0.00	99.02	0.00	0.00	3865.82
13-Dec-24	173.80	222.26	0.21	0.00	23.72	0.00	0.00	0.00	0.00	0.00	93.40	0.00	0.00	3792.99
14-Dec-24	162.35	220.06	0.06	0.00	26.94	0.00	0.00	0.00	0.00	0.00	98.40	0.00	0.00	3765.44
15-Dec-24	140.32	222.83	0.00	0.00	24.78	0.00	0.00	0.00	0.00	0.00	120.19	0.00	0.00	3646.58
16-Dec-24	170.43	227.62	0.00	0.00	25.62	0.00	0.00	0.00	0.00	0.00	89.80	0.23	0.00	3866.60
17-Dec-24	171.14	233.44	0.06	0.00	23.71	0.00	0.00	0.00	0.00	0.00	88.09	0.65	0.00	3978.91
18-Dec-24	181.09	225.68	0.05	0.00	22.53	0.00	0.00	0.00	0.00	0.00	81.34	0.00	0.00	4075.67
19-Dec-24	181.20	213.81	0.08	0.00	22.26	0.00	0.00	0.00	0.00	0.00	95.33	0.68	0.00	4111.64
20-Dec-24	190.24	220.63	0.14	0.00	22.69	0.00	0.00	0.00	0.00	0.00	102.60	0.59	0.00	4120.93
21-Dec-24	198.16	226.31	0.27	0.00	25.09	0.00	0.00	0.00	0.00	0.00	96.22	0.07	0.00	4134.32
22-Dec-24	159.84	256.03	0.02	0.10	24.46	0.00	0.00	0.00	0.00	0.00	104.52	0.00	0.00	4030.73
23-Dec-24	187.37	255.57	0.01	0.02	22.28	0.00	0.00	0.00	0.00	0.00	86.68	0.61	0.00	4148.92
24-Dec-24	192.49	243.70	0.02	0.00	21.79	0.00	0.00	0.00	0.00	0.00	86.99	0.20	0.00	4110.27
25-Dec-24	179.37	254.28	0.05	0.02	25.03	0.00	0.00	0.00	0.00	0.00	86.28	0.00	0.00	4058.44
26-Dec-24	200.86	217.01	0.12	0.00	19.92	0.00	0.00	0.00	0.00	0.00	94.44	0.00	0.00	4109.19
27-Dec-24	189.92	231.32	0.04	0.06	19.03	0.00	0.00	0.00	0.00	0.00	93.23	0.00	0.00	3938.08
28-Dec-24	184.38	224.91	0.15	0.08	20.63	0.00	0.00	0.00	0.00	0.00	130.36	0.00	0.00	3699.73
29-Dec-24	159.50	189.40	0.00	0.00	25.52	0.00	0.00	0.00	0.00	0.00	132.32	0.00	0.00	3631.78
30-Dec-24	185.35	223.03	0.00	0.00	20.58	0.00	0.00	0.00	0.00	0.00	109.15	0.00	0.00	3856.75
31-Dec-24	182.92	209.71	0.10	0.00	20.26	0.00	0.00	0.00	0.00	0.00	102.19	0.00	0.00	3916.02
Total	5433.69	6643.13	1.81	0.28	772.34	0.00	0.00	0.00	0.00	0.00	3180.04	3.68	0.00	120852.41

Source: NLDC

[^] includes bilateral short-term transactions under GNA and T-GNA

* As available on CEA Website. Gross Electricity Generation excluding electricity generation from renewables and captive power plants.

[#] Scheduled volume of all the bid areas.

Note: Volume here has been finalised in consultation with Grid India, after resolving issues that emerged post implementation of GNA Regulations and transition to new WBES software by Grid India.

Table-31(a): PRICE OF DAY AHEAD TRANSACTIONS OF ELECTRICITY (DAY-WISE) (₹/kWh), DECEMBER 2024

Market Segment	Day Ahead Market of IEX			Day Ahead Market of PXIL			Day Ahead Market of HPX		
Date	Minimum ACP	Maximum ACP	Weighted Average Price*	Minimum ACP	Maximum ACP	Weighted Average Price*	Minimum ACP	Maximum ACP	Weighted Average Price*
1-Dec-24	1.80	7.00	3.11	-	-	-	-	-	-
2-Dec-24	2.00	10.00	3.65	-	-	-	-	-	-
3-Dec-24	2.00	10.00	3.43	-	-	-	-	-	-
4-Dec-24	1.61	10.00	3.19	4.36	10.00	5.75	-	-	-
5-Dec-24	2.50	10.00	3.98	-	-	-	-	-	-
6-Dec-24	2.25	10.00	4.26	-	-	-	-	-	-
7-Dec-24	2.06	10.00	3.53	-	-	-	-	-	-
8-Dec-24	2.00	5.00	3.04	-	-	-	-	-	-
9-Dec-24	2.12	10.00	3.49	-	-	-	-	-	-
10-Dec-24	2.22	10.00	3.54	-	-	-	-	-	-
11-Dec-24	2.33	10.00	3.76	4.36	4.60	4.40	-	-	-
12-Dec-24	2.33	10.00	3.83	4.75	4.83	4.79	-	-	-
13-Dec-24	2.33	10.00	3.82	4.36	10.00	7.13	-	-	-
14-Dec-24	2.17	10.00	3.46	4.36	5.00	4.44	-	-	-
15-Dec-24	1.99	4.96	2.94	-	-	-	-	-	-
16-Dec-24	2.15	10.00	3.91	-	-	-	-	-	-
17-Dec-24	2.21	10.00	4.03	4.36	6.50	4.64	-	-	-
18-Dec-24	2.26	10.00	4.34	4.36	8.00	5.00	-	-	-
19-Dec-24	2.13	10.00	4.47	6.00	9.50	8.59	-	-	-
20-Dec-24	2.17	10.00	4.25	4.36	9.50	9.24	-	-	-
21-Dec-24	2.12	10.00	4.21	4.58	10.00	6.41	-	-	-
22-Dec-24	2.12	7.60	3.37	4.58	4.58	4.58	4.58	10.00	8.65
23-Dec-24	1.91	10.00	4.31	6.00	6.50	6.28	10.00	10.00	10.00
24-Dec-24	2.20	10.00	4.50	4.58	7.00	4.99	-	-	-
25-Dec-24	2.16	10.00	4.27	4.58	10.00	8.51	10.00	10.00	10.00
26-Dec-24	2.00	10.00	4.39	5.00	9.50	7.40	-	-	-
27-Dec-24	1.93	10.00	4.45	6.00	6.00	6.00	10.00	10.00	10.00
28-Dec-24	1.90	10.00	3.62	8.00	10.00	9.73	10.00	10.00	10.00
29-Dec-24	1.94	4.43	2.89	-	-	-	-	-	-
30-Dec-24	2.12	10.00	4.57	-	-	-	10.00	10.00	10.00
31-Dec-24	2.20	10.00	4.38	10.00	10.00	10.00	-	-	-
	1.61[#]	10.00[#]	3.86	4.36[#]	10.00[#]	7.02	4.58[#]	10.00[#]	9.52

Source: IEX, PXIL and HPX

* Weighted average price computed based on Area Clearing Volume (ACV) and Area Clearing Price (ACP) for each hour of the day. Here, ACV and ACP represent the scheduled volume and weighted average price of all the bid areas of power exchanges.

[#] Maximum/Minimum in the month

**Table-31(b): PRICE OF GREEN DAY AHEAD TRANSACTIONS OF ELECTRICITY (DAY-WISE) (₹/kWh),
DECEMBER 2024**

Market Segment	Green Day Ahead Market of IEX			Green Day Ahead Market of PXIL			Green Day Ahead Market of HPX		
Date	Minimum ACP	Maximum ACP	Weighted Average Price*	Minimum ACP	Maximum ACP	Weighted Average Price*	Minimum ACP	Maximum ACP	Weighted Average Price*
1-Dec-24	1.80	5.50	3.09	-	-	-	-	-	-
2-Dec-24	1.80	10.00	3.46	-	-	-	-	-	-
3-Dec-24	2.50	10.00	3.78	-	-	-	-	-	-
4-Dec-24	2.50	10.00	3.76	-	-	-	-	-	-
5-Dec-24	1.80	10.00	3.41	-	-	-	-	-	-
6-Dec-24	2.50	10.00	3.95	-	-	-	-	-	-
7-Dec-24	2.50	10.00	4.03	-	-	-	-	-	-
8-Dec-24	1.60	6.50	2.87	-	-	-	-	-	-
9-Dec-24	2.00	10.00	3.83	-	-	-	-	-	-
10-Dec-24	2.00	10.00	3.59	-	-	-	-	-	-
11-Dec-24	2.33	10.00	3.65	-	-	-	-	-	-
12-Dec-24	2.33	10.00	3.75	-	-	-	-	-	-
13-Dec-24	3.00	10.00	4.13	-	-	-	-	-	-
14-Dec-24	2.50	10.00	3.78	-	-	-	-	-	-
15-Dec-24	2.06	5.90	3.18	-	-	-	-	-	-
16-Dec-24	2.12	10.00	3.75	-	-	-	-	-	-
17-Dec-24	2.51	10.00	3.88	-	-	-	-	-	-
18-Dec-24	2.51	10.00	4.09	-	-	-	-	-	-
19-Dec-24	2.70	10.00	4.40	-	-	-	-	-	-
20-Dec-24	2.70	10.00	4.71	-	-	-	-	-	-
21-Dec-24	2.50	10.00	4.21	-	-	-	-	-	-
22-Dec-24	2.37	6.80	3.42	-	-	-	-	-	-
23-Dec-24	2.55	10.00	4.35	-	-	-	-	-	-
24-Dec-24	2.93	10.00	4.57	-	-	-	-	-	-
25-Dec-24	3.00	10.00	4.45	-	-	-	-	-	-
26-Dec-24	3.00	10.00	4.80	-	-	-	-	-	-
27-Dec-24	3.00	10.00	4.88	-	-	-	-	-	-
28-Dec-24	3.00	10.00	4.47	-	-	-	-	-	-
29-Dec-24	2.37	5.58	3.41	-	-	-	-	-	-
30-Dec-24	3.00	10.00	4.69	-	-	-	-	-	-
31-Dec-24	3.00	10.00	5.11	-	-	-	-	-	-
	1.60[#]	10.00[#]	3.92	-	-	-	-	-	-

Source: IEX, PXIL and HPX

* Weighted average price computed based on Area Clearing Volume (ACV) and Area Clearing Price (ACP) for each hour of the day. Here, ACV and ACP represent the scheduled volume and weighted average price of all the bid areas of power exchanges.

Maximum/Minimum in the month

Table-31(c): PRICE OF REAL TIME TRANSACTIONS OF ELECTRICITY (DAY-WISE) (₹/kWh), DECEMBER 2024

Market Segment	Real Time Market of IEX			Real Time Market of PXIL			Real Time Market of HPX		
	Date	Minimum ACP	Maximum ACP	Weighted Average Price*	Minimum ACP	Maximum ACP	Weighted Average Price*	Minimum ACP	Maximum ACP
1-Dec-24	1.00	4.01	2.74	-	-	-	-	-	-
2-Dec-24	0.40	6.00	2.73	-	-	-	-	-	-
3-Dec-24	1.40	10.00	3.21	-	-	-	-	-	-
4-Dec-24	1.50	10.00	3.68	-	-	-	-	-	-
5-Dec-24	2.35	10.00	4.36	-	-	-	-	-	-
6-Dec-24	2.20	10.00	4.55	10.00	10.00	10.00	-	-	-
7-Dec-24	2.25	10.00	3.80	-	-	-	-	-	-
8-Dec-24	1.40	4.35	2.97	-	-	-	-	-	-
9-Dec-24	1.43	8.00	3.44	-	-	-	-	-	-
10-Dec-24	1.59	10.00	4.13	10.00	10.00	10.00	-	-	-
11-Dec-24	1.61	10.00	3.84	10.00	10.00	10.00	-	-	-
12-Dec-24	1.98	10.00	4.10	-	-	-	-	-	-
13-Dec-24	1.00	10.00	3.25	-	-	-	-	-	-
14-Dec-24	2.05	10.00	3.90	-	-	-	-	-	-
15-Dec-24	0.90	4.91	3.02	-	-	-	-	-	-
16-Dec-24	1.52	10.00	4.34	10.00	10.00	10.00	-	-	-
17-Dec-24	1.66	10.00	4.40	10.00	10.00	10.00	-	-	-
18-Dec-24	1.66	10.00	4.84	-	-	-	-	-	-
19-Dec-24	2.00	10.00	4.93	10.00	10.00	10.00	-	-	-
20-Dec-24	1.97	10.00	4.31	10.00	10.00	10.00	-	-	-
21-Dec-24	1.94	10.00	4.22	10.00	10.00	10.00	-	-	-
22-Dec-24	1.66	5.00	3.56	-	-	-	-	-	-
23-Dec-24	2.10	10.00	4.95	10.00	10.00	10.00	-	-	-
24-Dec-24	1.57	10.00	4.81	10.00	10.00	10.00	-	-	-
25-Dec-24	0.99	10.00	4.13	-	-	-	-	-	-
26-Dec-24	1.74	10.00	4.77	-	-	-	-	-	-
27-Dec-24	1.10	6.00	3.07	-	-	-	-	-	-
28-Dec-24	0.78	5.06	2.53	-	-	-	-	-	-
29-Dec-24	1.10	5.30	3.09	-	-	-	-	-	-
30-Dec-24	1.52	10.00	4.19	-	-	-	-	-	-
31-Dec-24	2.16	10.00	3.86	-	-	-	-	-	-
	0.40#	10.00#	3.80	10.00#	10.00#	10.00	-	-	-

Source: IEX, PXIL and HPX

* Weighted average price computed based on Area Clearing Volume (ACV) and Area Clearing Price (ACP) for each hour of the day. Here, ACV and ACP represent the scheduled volume and weighted average price of all the bid areas of power exchanges.

Maximum/Minimum in the month

**Table-31(d): PRICE OF HIGH PRICE DAY AHEAD TRANSACTIONS OF ELECTRICITY (DAY-WISE) (₹/kWh),
DECEMBER 2024**

Market Segment	High Price Day Ahead Market of IEX			High Price Day Ahead Market of PXIL			High Price Day Ahead Market of HPX		
	Minimum ACP	Maximum ACP	Weighted Average Price	Minimum ACP	Maximum ACP	Weighted Average Price	Minimum ACP	Maximum ACP	Weighted Average Price
1-Dec-24	-	-	-	-	-	-	-	-	-
2-Dec-24	-	-	-	-	-	-	-	-	-
3-Dec-24	-	-	-	-	-	-	-	-	-
4-Dec-24	-	-	-	-	-	-	-	-	-
5-Dec-24	-	-	-	-	-	-	-	-	-
6-Dec-24	-	-	-	-	-	-	-	-	-
7-Dec-24	-	-	-	-	-	-	-	-	-
8-Dec-24	-	-	-	-	-	-	-	-	-
9-Dec-24	-	-	-	-	-	-	-	-	-
10-Dec-24	-	-	-	-	-	-	-	-	-
11-Dec-24	-	-	-	-	-	-	-	-	-
12-Dec-24	-	-	-	-	-	-	-	-	-
13-Dec-24	-	-	-	-	-	-	-	-	-
14-Dec-24	-	-	-	-	-	-	-	-	-
15-Dec-24	-	-	-	-	-	-	-	-	-
16-Dec-24	-	-	-	-	-	-	-	-	-
17-Dec-24	-	-	-	-	-	-	-	-	-
18-Dec-24	-	-	-	-	-	-	-	-	-
19-Dec-24	-	-	-	-	-	-	-	-	-
20-Dec-24	-	-	-	-	-	-	-	-	-
21-Dec-24	-	-	-	-	-	-	-	-	-
22-Dec-24	-	-	-	-	-	-	-	-	-
23-Dec-24	-	-	-	-	-	-	-	-	-
24-Dec-24	-	-	-	-	-	-	-	-	-
25-Dec-24	-	-	-	-	-	-	-	-	-
26-Dec-24	-	-	-	-	-	-	-	-	-
27-Dec-24	-	-	-	-	-	-	-	-	-
28-Dec-24	-	-	-	-	-	-	-	-	-
29-Dec-24	-	-	-	-	-	-	-	-	-
30-Dec-24	-	-	-	-	-	-	-	-	-
31-Dec-24	-	-	-	-	-	-	-	-	-
	-	-	-	-	-	-	-	-	-

Source: IEX, PXIL and HPX

Maximum/Minimum in the month

Table-32: VOLUME OF SHORT-TERM TRANSACTIONS OF ELECTRICITY (REGIONAL ENTITY*-WISE) (MU), DECEMBER 2024

Name of the Entity	Through Bilateral (Traders, PX, Direct)			Through Power Exchange (DAM + GDAM + HPDAM + RTM)			Total Net***
	Sale	Purchase	Net**	Sale	Purchase	Net**	
Punjab	476.51	0.00	-476.51	8.95	631.40	622.46	145.94
Telangana	145.61	0.38	-145.23	22.45	2885.30	2862.86	2717.63
Rajasthan	57.21	870.22	813.01	100.54	408.09	307.54	1120.55
West Bengal	57.90	0.63	-57.28	570.70	71.63	-499.06	-556.34
Kerala	0.00	375.54	375.54	16.76	239.38	222.61	598.15
Uttar Pradesh	869.97	48.59	-821.38	858.39	469.04	-389.34	-1210.72
Maharashtra	42.98	334.24	291.26	88.19	1066.57	978.39	1269.65
Karnataka	48.90	112.92	64.02	433.54	200.43	-233.11	-169.09
Gujarat	108.50	358.91	250.41	39.30	1036.01	996.72	1247.13
Assam	0.00	2.88	2.88	229.21	45.01	-184.20	-181.31
Tamil Nadu	62.13	476.52	414.39	279.90	534.65	254.76	669.15
Andhra Pradesh	127.99	127.97	-0.03	47.49	524.09	476.60	476.57
Delhi	179.88	103.38	-76.50	90.72	275.36	184.64	108.14
Odisha	235.13	109.23	-125.90	723.12	196.72	-526.40	-652.30
Jammu Kashmir	0.00	440.53	440.53	35.15	341.33	306.18	746.71
Bihar	24.30	1.42	-22.88	943.46	1.40	-942.07	-964.94
Damodar Valley Corporation	71.70	0.00	-71.70	57.53	206.28	148.74	77.04
Chhattisgarh	72.57	5.90	-66.67	704.67	11.71	-692.96	-759.63
Uttarakhand	4.77	300.22	295.44	34.30	137.01	102.72	398.16
Daman and Diu - Dadra and Nagar Haveli	0.00	1.16	1.16	0.36	74.23	73.87	75.03
Madhya Pradesh	48.49	1090.40	1041.91	318.19	277.90	-40.30	1001.61
Tripura	0.00	0.00	0.00	20.29	3.03	-17.25	-17.25
Jharkhand	0.00	0.74	0.74	104.86	50.11	-54.75	-54.00
ArcelorMittal Nippon Steel India Limited	0.00	0.00	0.00	0.00	228.75	228.75	228.75
HIMACHAL PRADESH	2.83	410.85	408.02	43.72	101.17	57.44	465.46
BALCO (Bulk Consumer)	0.35	25.05	24.70	0.00	0.00	0.00	24.70
Jindal Power Limited, Stage-2	296.07	0.00	-296.07	578.26	8.66	-569.60	-865.66
Haryana	220.93	46.11	-174.82	375.99	83.03	-292.96	-467.78
Manipur	0.00	0.00	0.00	3.25	14.56	11.31	11.31
SKS Power Generation Chhattisgarh Limited	274.25	0.00	-274.25	13.42	23.78	10.36	-263.89
Meghalaya	6.50	38.18	31.68	8.96	69.67	60.71	92.39
The Tata Power Co Ltd (MTPS)	0.00	0.00	0.00	18.29	0.00	-18.29	-18.29
Government of Himachal Pradesh_NJHPS	0.00	0.00	0.00	27.33	0.70	-26.63	-26.63
MB POWER (MADHYA PRADESH) LIMITED	91.90	0.00	-91.90	5.82	8.37	2.54	-89.36
Government of Himachal Pradesh_Koldam HEP	0.00	0.00	0.00	11.67	0.55	-11.11	-11.11
Adani Power Limited - Raigarh TPP	71.20	13.13	-58.06	229.48	15.60	-213.88	-271.94
North Central Railway Prayagraj	0.00	0.00	0.00	0.00	10.36	10.36	10.36
Goa WR	11.16	30.81	19.65	25.77	5.01	-20.76	-1.11
Government of Himachal Pradesh_CHAMERA2HEP	0.00	0.00	0.00	4.16	0.42	-3.74	-3.74
Goa SR	0.32	11.16	10.83	0.02	5.41	5.39	16.22
Government of Himachal Pradesh_Parbat3HEP	0.00	0.00	0.00	2.17	0.40	-1.76	-1.76
Government of Himachal Pradesh_RampurHEP	0.00	0.00	0.00	8.13	0.21	-7.92	-7.92
Government of Himachal Pradesh_Chamera3HEP	0.00	0.00	0.00	3.19	0.12	-3.07	-3.07
Government of Himachal Pradesh_Chamera1HEP	0.00	0.00	0.00	5.15	0.07	-5.09	-5.09
SIMHAPURI ENERGY LIMITED	59.43	0.00	-59.43	13.07	4.46	-8.62	-68.04
Chandigarh (UT)	0.00	7.08	7.08	26.10	4.80	-21.30	-14.22
ACB (INDIA) LIMITED	57.47	0.00	-57.47	44.23	0.00	-44.23	-101.70
Government of Himachal Pradesh_BairasuilHEP	0.00	0.00	0.00	1.30	0.05	-1.25	-1.25
Ratnagiri Gas & Power Private Limited	1.80	0.00	-1.80	0.00	2.17	2.17	0.37
Sainj HEP	0.00	0.00	0.00	4.81	0.04	-4.77	-4.77
SHREE CEMENT LIMITED TPS	37.48	0.00	-37.48	7.69	0.00	-7.69	-45.18
Nagaland	0.00	0.00	0.00	4.20	6.79	2.59	2.59
Gandhar	0.00	0.00	0.00	0.00	0.54	0.54	0.54
Singoli Bhatwari HEP	1.48	0.00	-1.48	12.76	0.00	-12.76	-14.25
Arunachal Pradesh	2.50	0.00	-2.50	3.89	8.94	5.05	2.55
Sikkim	0.00	9.20	9.20	9.26	1.76	-7.50	1.70
KARCHAM WANGTOO HEP	2.75	0.00	-2.75	19.29	0.00	-19.29	-22.03
Pondicherry UT	0.00	0.00	0.00	18.21	0.69	-17.51	-17.51
Mizoram	0.00	0.00	0.00	1.84	0.22	-1.62	-1.62

Budhil HEP (Greenko Budhil Hydro Power Pvt. Ltd.)	0.00	0.00	0.00	1.08	0.00	-1.08	-1.08
AD HYDRO POWER LIMITED	0.00	0.00	0.00	15.21	0.00	-15.21	-15.21
NABINAGAR POWER GENERATING CO. LTD.	0.00	0.00	0.00	70.07	0.00	-70.07	-70.07
NTPC Singrauli	0.00	0.00	0.00	21.56	0.00	-21.56	-21.56
SEIL ENERGY INDIA LIMITED	42.28	0.00	-42.28	106.93	0.00	-106.93	-149.20
NTPC Farakka stage I	0.00	0.00	0.00	38.62	0.00	-38.62	-38.62
Sasan Power Limited	0.00	0.00	0.00	17.87	0.00	-17.87	-17.87
TRN ENERGY PRIVATE LIMITED	28.52	0.00	-28.52	34.51	0.00	-34.51	-63.02
NLC Tamilnadu Power Limited	0.00	0.00	0.00	2.26	0.00	-2.26	-2.26
RENEW SURYA OJAS PRIVATE LIMITED-Wind	0.00	0.00	0.00	14.30	0.00	-14.30	-14.30
Adani Power Limited-Raipur TPP	143.64	0.00	-143.64	432.32	0.00	-432.32	-575.96
ADANI RENEWABLE ENERGY HOLDING 4 LTD.	6.73	0.00	-6.73	67.64	0.00	-67.64	-74.37
NTPC Tanda Stage II	0.00	0.00	0.00	3.51	0.00	-3.51	-3.51
NTPC Rihand stage III	0.00	0.00	0.00	16.59	0.00	-16.59	-16.59
D B Power Limited	131.85	0.00	-131.85	25.50	0.00	-25.50	-157.34
NTPC Rihand stage II	0.00	0.00	0.00	12.37	0.00	-12.37	-12.37
NTPC Kahalgaon stage II	0.00	0.00	0.00	13.91	0.00	-13.91	-13.91
ADANI RENEWABLE ENERGY 41 LTD._infirm	0.14	0.00	-0.14	19.74	0.00	-19.74	-19.88
MAHAN ENERGEN LIMITED U#1	32.68	0.00	-32.68	142.51	5.58	-136.93	-169.62
NEA MUZAFFARPUR	0.00	0.00	0.00	9.17	59.57	50.40	50.40
Jhabua Power Limited	29.22	0.00	-29.22	59.23	0.00	-59.23	-88.45
NTPC Sipat Stage I	0.00	0.00	0.00	11.35	0.00	-11.35	-11.35
Jindal Steel & Power Ltd , DCPD	1.20	0.00	-1.20	99.26	0.00	-99.26	-100.46
MAITHON POWER LIMITED	0.00	0.00	0.00	2.18	0.00	-2.18	-2.18
RENEW SURYA ROSHNI PVT. LTD. Koppal PS	0.00	0.00	0.00	1.01	0.00	-1.01	-1.01
NTPC BARH Stage II	0.00	0.00	0.00	36.56	0.00	-36.56	-36.56
NTPC North Karanpura STPS	0.00	0.00	0.00	17.01	0.00	-17.01	-17.01
Jindal Power Limited, Stage-1	31.75	0.00	-31.75	246.10	1.35	-244.74	-276.49
NTPC Talcher Super Thermal Power Station Stage II	0.00	0.00	0.00	0.00	0.00	0.00	0.00
NTPC Telangana	0.00	0.00	0.00	5.40	0.00	-5.40	-5.40
NTPC Korba Stage I &II	0.00	0.00	0.00	17.70	0.00	-17.70	-17.70
NTPC Darlipali	0.00	0.00	0.00	11.69	0.00	-11.69	-11.69
NTPC Kahalgaon stage I	0.00	0.00	0.00	8.82	0.00	-8.82	-8.82
NLC INDIA LIMITED NEYVELI NEW TPS	0.00	0.00	0.00	6.62	0.00	-6.62	-6.62
NTPC Vindhyachal Stage IV	0.00	0.00	0.00	12.09	0.00	-12.09	-12.09
NTPC Gadawara	0.00	0.00	0.00	9.43	0.00	-9.43	-9.43
NEPAL ELECTRICITY AUTHORITY TANAKPUR	0.00	0.00	0.00	0.09	13.14	13.05	13.05
NREL-Dayapar Wind	0.00	0.00	0.00	6.28	0.00	-6.28	-6.28
NTPC Rihand stage I	0.00	0.00	0.00	12.43	0.00	-12.43	-12.43
Sorang HEP (Himachal Sorang Power Pvt. Ltd.)	0.29	0.00	-0.29	9.01	0.00	-9.01	-9.30
NTPC Sipat Stage II	0.00	0.00	0.00	4.67	0.00	-4.67	-4.67
MAHAN ENERGEN LIMITED U#2	63.61	0.24	-63.37	55.01	0.00	-55.01	-118.38
NTPC Farakka stage III	0.00	0.00	0.00	10.56	0.00	-10.56	-10.56
NTPC Vindhyachal Stage I	0.00	0.00	0.00	14.08	0.00	-14.08	-14.08
NTPC Lara Stage I	0.00	0.00	0.00	10.23	0.00	-10.23	-10.23
NTPC Vindhyachal Stage III	0.00	0.00	0.00	12.08	0.00	-12.08	-12.08
NTPC Vindhyachal Stage II	0.00	0.00	0.00	7.00	0.00	-7.00	-7.00
Adani Wind Energy Kutchh Four Ltd. Nakhatrana	1.73	0.00	-1.73	90.29	0.00	-90.29	-92.02
ReNew Surya Ravi Private Limited	4.02	0.00	-4.02	34.79	0.00	-34.79	-38.82
Transition Green Energy Private Limited	0.00	0.00	0.00	1.14	0.00	-1.14	-1.14
NTPC KUDGI	2.43	0.00	-2.43	4.79	0.00	-4.79	-7.22
NTPC Ramagundam Stage I &II	0.00	0.00	0.00	4.14	0.00	-4.14	-4.14
KAMENG HYDRO POWER STATION	0.00	0.00	0.00	10.74	0.00	-10.74	-10.74
BHARAT ALUMINIUM COMPANY LTD	10.64	0.00	-10.64	68.42	0.00	-68.42	-79.06
NTPC khargone	0.00	0.00	0.00	12.82	0.00	-12.82	-12.82
Adani Green Energy Twenty Five B Limited_infirm	0.00	0.00	0.00	32.18	0.00	-32.18	-32.18
NTPC Unchahar Stage IV	0.00	0.00	0.00	4.58	0.00	-4.58	-4.58
NLC INDIA LIMITED TPS II STAGE II	0.00	0.00	0.00	1.03	0.00	-1.03	-1.03
IGSTPS JHAJJAR	0.25	0.00	-0.25	14.18	0.00	-14.18	-14.43
NTPC Simhadri Stage II	0.00	0.00	0.00	2.01	0.00	-2.01	-2.01
Grian Energy Private Limited	0.00	0.00	0.00	1.68	0.00	-1.68	-1.68
Bongaigaon Thermal Power Station NTPC	0.00	0.00	0.00	2.82	0.00	-2.82	-2.82
NLC INDIA LIMITED TPS II STAGE I	0.00	0.00	0.00	0.90	0.00	-0.90	-0.90

NTPC Vindhyachal Stage V	0.00	0.00	0.00	5.34	0.00	-5.34	-5.34
Amplus Ages Private Limited	0.00	0.00	0.00	0.88	0.00	-0.88	-0.88
NLC INDIA LIMITED TPS I EXPANSION	0.00	0.00	0.00	1.56	0.00	-1.56	-1.56
Palatana Plant	0.00	0.00	0.00	19.23	0.00	-19.23	-19.23
Onevolt Energy Private Limited	0.44	0.00	-0.44	2.62	0.00	-2.62	-3.06
Transition Energy Services Private Limited	0.00	0.00	0.00	7.82	0.00	-7.82	-7.82
Adhunik Power & Natural Resources Limited	0.00	0.00	0.00	1.19	0.00	-1.19	-1.19
SEIL Energy India Limited Project II	7.92	0.00	-7.92	25.79	0.00	-25.79	-33.71
NTPC BARH Stage I	0.00	0.00	0.00	24.21	0.00	-24.21	-24.21
Ostro Kannada Power Private Limited	7.86	0.00	-7.86	8.78	0.00	-8.78	-16.64
IND BARATH ENERGY UTKAL LIMITED	86.50	0.00	-86.50	92.88	2.42	-90.45	-176.96
NTPP BRBCL	0.00	0.00	0.00	15.42	0.00	-15.42	-15.42
NTPC Unchahar Stage I	0.00	0.00	0.00	2.98	0.00	-2.98	-2.98
NTPC Korba Stage III	0.00	0.00	0.00	6.12	0.00	-6.12	-6.12
NTPC Unchahar Stage II	0.00	0.00	0.00	1.92	0.00	-1.92	-1.92
GMR Warora Energy Limited	11.66	0.00	-11.66	7.13	0.00	-7.13	-18.79
NTPC Mouda Stage I	0.00	0.00	0.00	6.42	0.00	-6.42	-6.42
Serentica Renewables India 1 Private Limited	25.05	0.00	-25.05	0.32	0.00	-0.32	-25.37
NTPC Dadri Stage II	0.00	0.00	0.00	12.51	0.00	-12.51	-12.51
R.K.M POWERGEN PRIVATE LIMITED	34.61	0.00	-34.61	18.29	0.00	-18.29	-52.90
NTPC Dadri Stage I	0.00	0.00	0.00	19.43	0.00	-19.43	-19.43
NTECL VALLUR	0.00	0.00	0.00	4.10	0.00	-4.10	-4.10
Serentica Renewables India 4 Private Limited	0.00	0.00	0.00	1.09	0.00	-1.09	-1.09
ADANI GREEN ENERGY 25 LTD. _infirm	0.00	0.00	0.00	19.25	0.00	-19.25	-19.25
NTPC Solapur	0.00	0.00	0.00	7.65	0.00	-7.65	-7.65
ASSAM GAS BASED POWER STATION	0.00	0.00	0.00	1.83	0.00	-1.83	-1.83
KANTI BIJLEE UTPADAN NIGAM LIMITED	0.00	0.00	0.00	6.00	0.00	-6.00	-6.00
NTPC Simhadri Stage I	0.00	0.00	0.00	0.05	0.00	-0.05	-0.05
ADANI SOLAR ENERGY RJ TWO PVT. LTD.	0.00	0.00	0.00	34.77	0.00	-34.77	-34.77
NTPC Ramagundam Stage III	0.00	0.00	0.00	0.73	0.00	-0.73	-0.73
Amp Energy Green Six Private Limited	0.00	0.00	0.00	15.05	0.00	-15.05	-15.05
NTPC Mouda Stage II	0.00	0.00	0.00	10.61	0.00	-10.61	-10.61
NLC INDIA LIMITED TPS II EXPANSION	0.00	0.00	0.00	0.86	0.00	-0.86	-0.86
RENEW SURYA PRATAP PRIVATE LIMITED	0.00	0.00	0.00	34.50	0.00	-34.50	-34.50
Tashiding HEP, Shiga Energy Private Limited	0.00	0.00	0.00	0.04	0.00	-0.04	-0.04
TPSL Banderwala SECI 100_INF	9.65	0.00	-9.65	3.47	0.00	-3.47	-13.12
Jorethang Loop HEP, DANS ENERGY PVT. LTD.	0.00	0.00	0.00	0.05	0.00	-0.05	-0.05
Adept Renewable Technologies Private Limited	0.00	0.00	0.00	15.99	0.00	-15.99	-15.99
SEMBCORP GREEN INFRA PVT. LTD. (INFIRM)	0.00	0.00	0.00	3.33	0.00	-3.33	-3.33
IL&FS TAMIL NADU POWERCO . LTD.	0.00	0.00	0.00	1.76	0.00	-1.76	-1.76
Maruti Clean Coal and Power Limited	26.12	0.00	-26.12	3.98	0.13	-3.85	-29.97
Jaypee Nigrie Super Thermal Power Plant	212.17	0.00	-212.17	181.80	0.00	-181.80	-393.96
Adani Solar Energy Jaisalmer 2 Pvt. Ltd. (Project-2)	0.00	0.00	0.00	23.48	0.00	-23.48	-23.48
NTPC Talcher Stage I	0.00	0.00	0.00	6.70	0.00	-6.70	-6.70
AGARTALA GAS BASED POWER STATION	0.00	0.00	0.00	11.59	0.00	-11.59	-11.59
Jindal India Thermal Power Limited	238.36	0.00	-238.36	0.00	0.00	0.00	-238.36
WIND FIVE RENERGY LIMITED	0.00	0.00	0.00	5.65	0.00	-5.65	-5.65
GMR KAMALANGA ENERGY LTD-CTU	0.00	0.00	0.00	1.75	0.00	-1.75	-1.75
NTPC Unchahar Stage III	0.00	0.00	0.00	1.70	0.00	-1.70	-1.70
Renew Surya Roshni Pvt. Ltd.-Fatehgarh-III PS	0.00	0.00	0.00	0.29	0.00	-0.29	-0.29
Adani Solar Energy Jodhpur Two Limited	0.00	0.00	0.00	8.61	0.00	-8.61	-8.61
COASTAL ENERGEN PRIVATE LIMITED	83.09	45.69	-37.39	24.87	1.60	-23.27	-60.66
Adani Renewable Energy Fifty Five Limited PSS3 infirm (162.5 MW Hybrid Solar of 187.5MW HPD)	0.00	0.00	0.00	9.32	0.00	-9.32	-9.32
Serentica Renewables India 1 Pvt. Ltd.- Koppal (Infirm)	0.00	0.00	0.00	0.84	0.00	-0.84	-0.84
DHARIWAL STU OTH	13.81	0.00	-13.81	0.35	0.00	-0.35	-14.16
CONTINUUM POWER TRADING (TN) PVT. LTD.	0.00	0.00	0.00	5.95	0.00	-5.95	-5.95
NTPC SAIL POWER COMPANY LIMITED	0.00	0.00	0.00	0.91	0.00	-0.91	-0.91
TPSL 200MW TPTCL Banderwala	8.44	0.00	-8.44	9.36	0.00	-9.36	-17.80
Adani Green Energy Twenty Six B Limited _infirm	0.00	0.00	0.00	6.22	0.00	-6.22	-6.22
Chuzachen HEP	0.00	0.00	0.00	0.04	0.00	-0.04	-0.04
Dhariwal ISTS	9.20	0.00	-9.20	2.48	0.00	-2.48	-11.68
Adani Green Energy Twenty Five A Limited _Infirm	0.00	0.00	0.00	15.51	0.00	-15.51	-15.51

NTPC SOLAPUR SOLAR PV Station	0.00	0.00	0.00	1.09	0.00	-1.09	-1.09
Adani Green Energy Twenty Six A Limited_infirm	0.00	0.00	0.00	0.75	0.00	-0.75	-0.75
Adani Wind Energy Kutchh Four Ltd. Nakhatrana (infirm)	0.00	0.00	0.00	1.96	0.00	-1.96	-1.96
Ramagundam Floating solar	10.05	0.00	-10.05	2.66	0.00	-2.66	-12.71
Simhadri FSP 15 MW	0.00	0.00	0.00	1.34	0.00	-1.34	-1.34
Simhadri Floating solar (10 MW)	0.00	0.00	0.00	0.82	0.00	-0.82	-0.82
DHARIWAL STU MH	156.24	0.00	-156.24	0.00	0.00	0.00	-156.24
Dikchu HEP (Sneha Kinetic Power Projects Pvt. Ltd.)	0.89	0.00	-0.89	9.55	0.00	-9.55	-10.43
Druk Green Power Corporation Limited (Bhutan)	0.00	0.00	0.00	0.00	222.84	222.84	222.84
IRCON RENEWABLE POWER LIMITED Infirm	1.85	0.00	-1.85	0.00	0.00	0.00	-1.85
KHURJA STPP	0.00	0.00	0.00	41.33	0.00	-41.33	-41.33
KSK MAHANADI POWER COMPANY LIMITED	0.00	0.00	0.00	0.02	0.00	-0.02	-0.02
LANCO AMARKANTAK POWER LIMITED	0.00	0.00	0.00	1.13	0.00	-1.13	-1.13
NEA - Bihar STU	0.00	18.54	18.54	0.00	0.00	0.00	18.54
Kawas	0.00	0.00	0.00	0.00	0.66	0.66	0.66
TANAKPUR POWER STATION	6.92	0.00	-6.92	0.00	0.00	0.00	-6.92
JUNIPER GREEN COSMIC PRIVATE LIMITED	0.00	0.00	0.00	15.99	0.00	-15.99	-15.99
Serentica Renewables India 5 Private Limited	0.68	0.00	-0.68	8.47	0.00	-8.47	-9.15
Ambuja Cements Ltd. (Khavda PSS-3) infirm	0.52	0.00	-0.52	5.00	0.00	-5.00	-5.52
Serentica Renewables India 5 Private Limited- Infirm	0.00	0.00	0.00	0.41	0.00	-0.41	-0.41
Acme Phalodi Solar Energy Private Limited_Infirm	0.00	0.00	0.00	19.89	0.00	-19.89	-19.89
Acme Raisar Solar Energy Private Limited_Infirm	0.00	0.00	0.00	13.03	0.00	-13.03	-13.03
IRCON RENEWABLE POWER LIMITED	9.51	0.00	-9.51	0.00	0.00	0.00	-9.51
Jindal India Power Limited	0.00	0.00	0.00	111.97	0.00	-111.97	-111.97
RKM_POWER	149.15	0.00	-149.15	0.00	0.00	0.00	-149.15
Transition Sustainable Energy Services One Pvt. Ltd.	0.00	0.00	0.00	6.90	0.00	-6.90	-6.90
Adani Green Energy Twenty Four A Limited_infirm	0.00	0.00	0.00	8.70	0.00	-8.70	-8.70
Adani Renewable Energy 55 Limited PSS3 infirm (25 MW Hybrid Solar of 25 MW of 187.5MW HPD)	0.00	0.00	0.00	0.72	0.00	-0.72	-0.72
Adani Renewable Energy 55 Limited PSS3 infirm (20.8 MW Hybrid Wind of 25 MW of 187.5MW HPD)	0.00	0.00	0.00	0.15	0.00	-0.15	-0.15
Adani Renewable Energy Forty One Limited PSS-3	2.13	0.00	-2.13	47.20	0.00	-47.20	-49.32
Adani Renewable Energy Holding Four Limited PSS-1	16.64	0.00	-16.64	86.88	0.00	-86.88	-103.52
Adani Green Energy Twenty Five B Limited_PSS-2	0.00	0.00	0.00	47.60	0.00	-47.60	-47.60
Adani Renewable Energy Forty Eight Limited (Wind)_infirm	0.00	0.00	0.00	7.79	0.00	-7.79	-7.79
Adani Green Energy Twenty Five A Limited_PSS-2	0.00	0.00	0.00	24.21	0.00	-24.21	-24.21
Adani Renewable Energy Forty Eight Limited (Wind)_PSS-9	0.00	0.00	0.00	1.80	0.00	-1.80	-1.80
Adani Green Energy Twenty Four Limited_infirm	0.00	0.00	0.00	11.12	0.00	-11.12	-11.12
Adani Green Energy Twenty Four A Limited_PSS-3	0.00	0.00	0.00	2.14	0.00	-2.14	-2.14
Adani Green Energy Twenty Six B Limited_PSS-2	0.00	0.00	0.00	9.37	0.00	-9.37	-9.37
Adani Renewable Energy Fifty Five Limited PSS-3 (162.5 MW Hybrid Solar of 187.5MW HPD)	0.00	0.00	0.00	20.12	0.00	-20.12	-20.12
Adani Green Energy Twenty Five Limited	0.00	0.00	0.00	24.74	0.00	-24.74	-24.74
AMP Energy Green Four Private Limited_Infirm	0.00	0.00	0.00	0.61	0.00	-0.61	-0.61
Adani Renewable Energy Fifty Five Limited PSS3 (20.8 MW Hybrid Wind of 25 MW of 187.5MW HPD)	0.00	0.00	0.00	0.27	0.00	-0.27	-0.27
Adani Renewable Energy Fifty Five Limited PSS3 (25 MW Hybrid Solar of 25 MW of 187.5MW HPD)	0.00	0.00	0.00	0.38	0.00	-0.38	-0.38
Adani Green Energy Twenty Six A Limited_PSS-3	0.00	0.00	0.00	0.28	0.00	-0.28	-0.28
Ambuja Cements Limited_PSS3	0.30	0.00	-0.30	3.99	0.00	-3.99	-4.29
AMNSIL_WR_State	0.00	8.95	8.95	0.00	0.00	0.00	8.95
NEPAL_NR	0.00	6.92	6.92	0.00	0.00	0.00	6.92

Source: NLDC

* in case of a state, the entities which are "selling" also include generators connected to state grid and the entities which are "buying" also include open access consumers.

** (-) indicates sale and (+) indicates purchase,

*** Total net includes net of transactions through bilateral and power exchanges

Table-33: VOLUME AND CHARGES UNDER DSM (DAY-WISE), DECEMBER 2024

Date	Volume (MU)	All India Grid Charges (₹/kWh)		
		Minimum	Maximum	Average
1-Dec-24	78.36	2.29	10.00	3.44
2-Dec-24	72.98	2.14	10.00	3.86
3-Dec-24	75.60	2.43	10.00	3.95
4-Dec-24	74.41	2.27	10.00	3.98
5-Dec-24	72.71	2.72	10.00	4.56
6-Dec-24	70.87	2.72	10.34	4.99
7-Dec-24	69.27	2.60	10.00	4.36
8-Dec-24	82.54	2.38	10.00	3.52
9-Dec-24	87.53	2.30	10.00	3.96
10-Dec-24	78.47	2.47	10.00	4.29
11-Dec-24	77.21	2.53	10.00	4.26
12-Dec-24	75.92	2.71	10.00	4.47
13-Dec-24	79.06	2.39	10.00	4.12
14-Dec-24	77.95	2.64	10.32	4.21
15-Dec-24	81.15	2.30	10.00	3.50
16-Dec-24	76.53	2.22	10.00	4.61
17-Dec-24	77.93	2.41	13.73	6.67
18-Dec-24	74.32	2.83	14.21	6.29
19-Dec-24	76.61	2.28	17.54	6.37
20-Dec-24	83.46	2.47	14.69	5.76
21-Dec-24	79.35	2.47	34.15	6.84
22-Dec-24	81.76	2.48	11.97	4.33
23-Dec-24	79.80	2.56	13.59	6.32
24-Dec-24	77.47	2.28	13.37	6.02
25-Dec-24	74.84	2.27	12.55	5.18
26-Dec-24	78.92	2.18	15.02	5.94
27-Dec-24	84.85	2.36	12.26	4.82
28-Dec-24	90.14	1.91	10.00	3.82
29-Dec-24	82.40	2.34	10.00	3.42
30-Dec-24	86.12	2.28	14.97	5.52
31-Dec-24	85.33	2.59	14.72	5.10
Total	2443.87	1.91[#]	34.15[#]	4.79
<i>Source: NLDC</i>				
<i># Maximum/Minimum in the month</i>				

Table-34: VOLUME OF ELECTRICITY UNDER DRAWAL/ OVER INJECTION (EXPORTED) UNDER DSM, DECEMBER 2024

Name of the Entity	Volume of Under drawal/ Over injection (MU)	% of Volume
Madhya Pradesh	132.91	5.52
Gujarat	127.32	5.28
Rajasthan	112.84	4.68
Tamil Nadu	96.44	4.00
Punjab	91.29	3.79
Uttar Pradesh	82.38	3.42
Haryana	69.45	2.88
Delhi	62.03	2.57
Telangana	45.83	1.90
Andhra Pradesh	45.25	1.88
Jammu & Kashmir	43.92	1.82
Karnataka	40.91	1.70
Chattisgarh	36.61	1.52
Maharashtra	30.69	1.27
DVC Beneficiary	29.78	1.24
Bihar	24.59	1.02
Telangana super thermal power plant	21.56	0.89
Jindal Power Ltd. Stage-2	21.51	0.89
JHARKHAND Beneficiary	21.19	0.88
IGSTPS JHAJJAR	21.00	0.87
Uttarakhand	20.59	0.85
Sasan Ultra Mega Power Project	20.56	0.85
Assam Gas Based Power Plant(Kathalguri)	20.06	0.83
Odisha	19.84	0.82
Jindal Power Ltd.	18.94	0.79
DADRI TPS#1	18.12	0.75
Ramagundam	17.94	0.74
Himachal Pradesh	17.28	0.72
NPCIL Kakrapar Atomic Power Plant	16.84	0.70
NTPC Mauda Super Thermal Power Station Stage 2	16.74	0.69
ARCELORMITTAL NIPPON STEEL INDIA LTD. Beneficiary	16.65	0.69
NTPC_KUDGI	16.00	0.66
NTPC Lara	15.66	0.65
NTPC Gadawara Super Thermal Power Plant Stage-I	15.62	0.65
NTPC Mauda Super Thermal Power Station	14.74	0.61
NTPC Solapur Thermal Power Station Stage-1	14.46	0.60
Adani Solar Energy Jaisalmer One Private Limited WIND	14.31	0.59
Renew Power Limited SECI-II	14.01	0.58
DADRI TPS#2	13.72	0.57
NEPAL_NVVN	13.61	0.56
OSTRO Energy Private Limited	12.97	0.54
Adani Wind Energy Kutchh One Limited	12.25	0.51
TANDA STAGE #2	10.93	0.45
BARH I	10.64	0.44
NABINAGAR STPP (NPGC)	9.99	0.41
Adani Wind Energy Kutchh Four Ltd, Nakhatrana and Dedhiya	9.71	0.40
BARH	9.64	0.40
Sitac Kabini Renewables Pvt. Ltd.	9.42	0.39
BHAKRA	9.22	0.38
UNCHAHAR 2	8.94	0.37
Railways	8.94	0.37
Adani Wind Energy MP One Private Limited	8.92	0.37
JSW Renew Energy Limited Savalaperi infirm	8.81	0.37
RKM Power	8.73	0.36
Adani Power Limited - Raipur TPP	8.65	0.36
UNCHAHAR 4	8.63	0.36
Pondichery	8.63	0.36
ReNew Surya Ojas Private Limited koppal	8.39	0.35
NTPC Sipat Thermal Power Station Stage-1	8.34	0.35
Apraava Energy Private Limited (AEPL)	7.92	0.33
HIRIYUR_OSTROKANNADA	7.78	0.32
JPNIGRIE (JNSTPP)	7.50	0.31

Darlipali Super Thermal Power Station	7.46	0.31
KHURJA_STPP	7.39	0.31
Talcher stage 2	7.27	0.30
Tuticorin_JSWRenew_W_Infirm	7.11	0.30
BALCO_CTU	7.09	0.29
Meghalaya	6.81	0.28
Alfanar Energy Private Limited	6.80	0.28
SINGRAULI TPS	6.62	0.27
Manipur	6.57	0.27
Green Infra Wind Energy Limited SECI-II Vadva	6.47	0.27
NTPC Farakka	6.47	0.27
Simhardi Stage-1	6.42	0.27
Kerala	6.39	0.27
ADANI HYBRID WIND ENERGY JAILSALMER ONE LTD	6.38	0.26
Green Infra Wind Energy Limited SECI-III Vadva	6.37	0.26
NEW NEYVELI THERMAL POWER PALNT	6.30	0.26
ADYAH SOLAR ENERGY PRIVATE LIMITED	6.23	0.26
ACME DEOGHAR SOLAR POWER PRIVATE LIMITED	6.10	0.25
West Bengal	5.71	0.24
Simhardi Stage-2	5.68	0.24
NTPC Khargone Super Thermal Power Plant	5.59	0.23
UNCHAHAR 1	5.54	0.23
Adani Solar Energy Jaisalmer Four Private Limited SOLAR	5.45	0.23
NSPCL	5.35	0.22
Tehri Hydro	5.33	0.22
Dadar & Nagar Haveli, Daman & Diu	5.29	0.22
Bongaigaon TPP(NTPC)	5.23	0.22
NTPC Vindhyachal Super Thermal Power Station Stage 3	5.22	0.22
Kolayat Solar Power Plant	5.15	0.21
Mizoram	5.11	0.21
ReNew Surya Roshni Pvt Ltd	5.05	0.21
Kahalgaon stage 1	5.04	0.21
Avikiran Solar India Private Ltd	5.01	0.21
Girel, Tuticorin	4.97	0.21
Goa	4.97	0.21
ADANI HYBRID ENERGY JAILSALMER TWO LTD wind	4.89	0.20
PVG_Tata Power Renewable Energy Limited	4.83	0.20
Assam	4.78	0.20
NTPC Vindhyachal Super Thermal Power Station Stage I	4.75	0.20
Altra Xergi Power Private Limited	4.65	0.19
MAHAN ENERGEN LIMITED	4.64	0.19
Kahalgaon stage 2	4.54	0.19
Netra Wind Private Limited	4.54	0.19
Tripura	4.54	0.19
NAPTHA JHAKRI HEP	4.53	0.19
DP Power	4.53	0.19
NTPC North Karanpura STPS	4.45	0.18
Torrent Solargen Ltd (Torrent Power Ltd)	4.38	0.18
NLCII Stage 2	4.37	0.18
Vallur Thermal Power Station	4.29	0.18
ACME DHAULPUR POWERTECH PRIVATE LIMITED	4.28	0.18
INOX GREEN ENERGY SERVICES LIMITED	4.21	0.17
Chamera 1	4.14	0.17
Adani NPKUNTA_SOLAR	4.12	0.17
Talcher stage 1	4.05	0.17
Koteshwar hps	4.04	0.17
LANCO AMARKANTAK	3.98	0.17
BRBCL_NABINAGAR	3.92	0.16
Unchahar stage 3	3.88	0.16
Betam, Tuticorin	3.87	0.16
Fortum Solar	3.75	0.16
NTPC Vindhyachal Super Thermal Power Station Stage 2	3.75	0.16
AYANA RENEWABLE POWER SIX PRIVATE LIMITED	3.71	0.15
ACME PHALODI SOLAR ENERGY PRIVATE LIMITED	3.67	0.15
Nepal	3.66	0.15
Avaada Sunrays Energy Private Limited	3.63	0.15

NTPC ETTAYAPURAM SOLAR PLANT	3.63	0.15
Ananthapuramu (Sprng) Ultra Mega Solar Park	3.61	0.15
SIKKIM Beneficiary	3.61	0.15
Agartala Gas Turbine Power Plant	3.56	0.15
Mytrah, Tuticorin	3.55	0.15
Ayana, NPKUNTA	3.53	0.15
ADANI HYBRID ENERGY JAILSALMER THREE LTD (Wind ONLY)	3.52	0.15
Arinsun Clean Energy Private Ltd	3.52	0.15
URI	3.51	0.15
ADANI HYBRID ENERGY JAILSALMER ONE LTD (SOLAR ONLY)	3.49	0.14
SKS Power	3.48	0.14
VENA ENERGY VIDYUTH PRIVATE LIMITED_INFIRM	3.44	0.14
ADANI SOLAR ENERGY KA NINE PRIVATE LIMITED	3.40	0.14
NLC Tamli Nadu Power Ltd	3.39	0.14
Serentica Renewables India 1 Private Limited	3.26	0.14
NLC Expansion	3.22	0.13
Masaya Solar Energy Private Limited	3.18	0.13
Maithon Power Ltd.	3.15	0.13
Sipat Stage 2	3.15	0.13
NTPC Vindhyachal Super Thermal Power Station Stage 4	3.15	0.13
Mega Solis Renewables Private Limited	3.14	0.13
NLCII Stage 1	3.14	0.13
BEEMPOW ENERGY PRIVATE LIMITED	3.14	0.13
Adani Power Limited - Raigarh TPP	3.10	0.13
IRCON RENEWABLE POWER LIMITED_PAVAGADA	3.09	0.13
ACME Heergarh Powertech Private Limited	3.08	0.13
NTPC, NPKunta	3.06	0.13
AVAADA SUNSHINE ENERGY PRIVATE LIMITED	3.05	0.13
Dehar Hydro	3.04	0.13
Eden Renewable Cite Private Limited	3.03	0.13
Farakka stage 3	3.00	0.12
Azure Power Forty Three Private Limited	2.92	0.12
Ayana Renewable Power One Private Limited	2.92	0.12
Jindal India Thermal Power Ltd.	2.88	0.12
NTPC Rihand stage 2	2.86	0.12
Koldam Hydro Power	2.85	0.12
Rampur Hydro	2.85	0.12
NAPP	2.83	0.12
Orange, Tuticorin	2.80	0.12
URI Stage 2	2.80	0.12
Srijan Energy	2.78	0.12
Avaada Sunce Energy Private Limited	2.77	0.11
Kameng HEP	2.75	0.11
ReNew Surya Roshni Pvt Ltd	2.72	0.11
ABC RENEWABLE ENERGY PRIVATE LIMITED	2.69	0.11
Moser Baer Power (MB Power) MP Limited	2.68	0.11
Clean Solar Power (bhadla) Pvt. Ltd	2.68	0.11
ADANI HYBRID ENERGY JAILSALMER THREE LTD (SOLAR ONLY)	2.67	0.11
Nokhra Solar	2.64	0.11
Karacham Wangtoo	2.63	0.11
Renew Surya Aayan Private Limited	2.63	0.11
ACME RAISAR SOLAR ENERGY PRIVATE LIMITED	2.63	0.11
ReNew Sun Bright Private Limited	2.62	0.11
PARAMPUJYA SOALR ENERGY PVT LTD	2.59	0.11
NTPC Vindhyachal Super Thermal Power Station Stage 5	2.57	0.11
TPCL Mundra Thermal Power Station (formerly CGPL)	2.57	0.11
Avaada Sustainable RJProject Private Limited	2.51	0.10
DULHASTI Hydro power	2.51	0.10
Thar Surya 1 Private Limited	2.50	0.10
Athena Jaipur Solar Power Pvt. Ltd.	2.48	0.10
RENEW SOLAR ENERGY (JHARKHAND) PRIVATE LIMITED	2.46	0.10
Mega Suryaurja Pvt Ltd	2.46	0.10
Clean Solar Power (bhadla) Pvt. Ltd	2.45	0.10
SIMHAPURI(SEPL)	2.42	0.10
Baba Atomic research Centre	2.42	0.10

RENEW SURYA RAVI	2.37	0.10
Azure Power Forty One Private Limited	2.33	0.10
Korba Super Thermal Power Station Stage I&II	2.33	0.10
Avaada Solar, Pavagada	2.32	0.10
Renew Sun wave Pvt. Ltd. Fatehgarh2	2.29	0.10
Nagaland	2.25	0.09
Renew Solar Power Private Limited Bikaner	2.18	0.09
Mahindra Renewables Pvt Ltd.	2.13	0.09
Semcorp Energy India Limited_Project-1(SGPL)	2.11	0.09
JSW Energy Utkal Ltd	2.08	0.09
BALCO	2.07	0.09
ADANI RENEWABLE ENERGY HOLDING FOUR LIMITED	2.06	0.09
TANAKPUR	2.06	0.09
Semcorp Energy India Limited_Project-2(SGPL)	1.99	0.08
Adani Green Energy Ltd	1.99	0.08
Avaada solarize	1.97	0.08
Adani Solar Energy Jaisalmer Five Private Limited	1.95	0.08
NVVN Bhutan	1.95	0.08
ELECTRO SOLAIRE PVT. LTD.	1.94	0.08
DHAULIGANGA HEP	1.93	0.08
Avaada RJHN Private Limited	1.93	0.08
Azure Power Pavagada	1.92	0.08
ILFS	1.91	0.08
Goa	1.90	0.08
Adani Renewable (RJ) Ltd	1.89	0.08
ReNew Solar Urja Pvt Ltd	1.86	0.08
GMR Warora Energy Ltd.	1.84	0.08
Pong Hydro Power	1.84	0.08
ACME Chittorgarh Solar Energy Private Limited	1.82	0.08
KSK mahanadi	1.79	0.07
TRN Energy	1.79	0.07
Ramagundam stage 3	1.77	0.07
JSW RENEW ENERGY TWO LIMITED (KARUR)	1.75	0.07
Jindal Steel & power Ltd. (Dangamahua CPP)	1.74	0.07
ADANI GREEN ENERGY TWENTY FIVE LIMITED	1.74	0.07
ADANI HYBRID ENERGY JAILSALMER TWO LTD (SOLAR ONLY)	1.71	0.07
Azure Solar	1.70	0.07
Azure Power Maple Private Limited	1.68	0.07
DEVIKOT SOLAR	1.65	0.07
AM Green Energy Private Limited Wind	1.65	0.07
Chandigarh	1.64	0.07
Nidan NTPC	1.63	0.07
Serentica Renewables India 4 Private Limited	1.63	0.07
Adani Solar Energy Jaisalmer One Private Limited	1.62	0.07
Fortum Finsurya	1.61	0.07
GRT Jewellers (India) Private Limited_GRTJIPL	1.59	0.07
Rihand Stage 3	1.59	0.07
TATA POWER RENEWABLE ENERGY LIMITED	1.59	0.07
RISING SUN ENENRGY PVT LIMITED	1.58	0.07
RENEW SURYA PRATAP	1.58	0.07
Powergrid HVDC	1.55	0.06
Tashiding Hydro Power	1.54	0.06
Adani Solar Energy Jaisalmer Two Private Limited	1.51	0.06
AMP Energy Green Five Private Limited	1.51	0.06
Korba Super Thermal Power Station Stage III	1.51	0.06
AMP Energy Green Six Private Limited	1.48	0.06
SRI5PL_BKN2	1.44	0.06
NTPC RAMAGUNDAM FLOATING SOLAR PLANT	1.42	0.06
Mejia Thermal Power station stage 2	1.41	0.06
Railways ER	1.41	0.06
Jhabua	1.40	0.06
AM Green Energy Private Limited Wind_Infirm	1.37	0.06
ADANI RENEWABLE ENERGY HOLDING FOUR LIMITED	1.33	0.06
Rihand Stage 1	1.32	0.05
Powerica	1.29	0.05
TATA POWER GREEN Energy Limited	1.23	0.05

Arunachal Pradesh	1.18	0.05
TATA, NPkunta	1.17	0.05
COASTAL ENERGEN PVT LTD	1.14	0.05
Adani Solar Energy Jaisalmer Two Private Limited (Project-2)	1.12	0.05
TPSL Banderwala	1.10	0.05
Yarrow, Pavagada	1.10	0.05
Adani Solar Energy Jaisalmer Two Private Limited, bhadla	1.09	0.05
Adani Solar Energy Jaisalmer Two Private Limited Solar	1.07	0.04
Nepal	1.05	0.04
Kishanganga HEP	0.99	0.04
AMPLUS Pavagada	0.99	0.04
Chamera 2	0.98	0.04
GUJARAT INDUSTRIES POWER COMPANY LTD	0.98	0.04
PVG_AMPLUS_PAVAGADA	0.98	0.04
Azure Power Thirty Four pvt Limited	0.97	0.04
Athena Bhiwadi Solar Power Pvt. Ltd	0.95	0.04
Grian Energy Private Limited	0.95	0.04
SEMBCORP GREEN INFRA PRIVATE LIMITED (INFIRM)	0.94	0.04
Adept Renewable Technologies Private Limited	0.94	0.04
Ratnagiri Gas and Power PVT Limited	0.92	0.04
Transition Sustainable Energy Services Pvt Ltd	0.92	0.04
NTPC ANTA SOLAR PV STATION	0.91	0.04
PVG_AMPLUS_TUMKUR	0.90	0.04
ACB (India) Ltd.	0.90	0.04
OneVolt Energy Private Limited	0.88	0.04
PALATANA	0.88	0.04
Chamera 3	0.88	0.04
Ranganadi HEP	0.87	0.04
Bangladesh	0.87	0.04
DIKCHU	0.85	0.04
SJVN	0.85	0.04
Gujarat State Electricity Corporation Limited phase-2	0.82	0.03
Ayana Renewable Power Three Private Limited	0.82	0.03
Gujarat State Electricity Corporation Limited, Radhanesda	0.82	0.03
Transition Green Energy Private Limited	0.81	0.03
INDIGRID SOLAR-II (AP) PRIVATE LIMITED	0.81	0.03
Transition Energy Services Private Limited	0.79	0.03
Reliance Industries Limited Jamnagar	0.78	0.03
Spring, Pugalur	0.76	0.03
Azure NPkunta	0.76	0.03
Adhunik Power & Natural Resources Ltd	0.75	0.03
RAP-B	0.75	0.03
Athena Karnal Solar Power Pvt. Ltd	0.74	0.03
SALAL Hydro	0.74	0.03
Bairasuil Hydro Power	0.74	0.03
JUNIPER GREEN COSMIC PRIVATE LIMITED	0.74	0.03
KREDL, Pavagada	0.73	0.03
Simhadari Floating Solar	0.72	0.03
TATA POWER RENEWABLE ENERGY LTD, Radhanesda	0.71	0.03
ReNew Solar Power Private Limited	0.70	0.03
Renew Surya Vihaan Private Limited	0.69	0.03
Singoli Bhatwari HEP	0.64	0.03
Athena Hisar Solar Power Pvt. Ltd	0.62	0.03
Auraiya Solar	0.62	0.03
Dhariwal Infrastructure	0.62	0.03
INDIGRID SOLAR-I (AP) PRIVATE LIMITED	0.59	0.02
Sherisha Rooftop Solar SPV Four Private Limited	0.58	0.02
TP Saurya	0.55	0.02
Pare_HEP	0.54	0.02
RANGIT	0.53	0.02
Renew Power Pavagada	0.51	0.02
Adani Solar Energy Four Private Limited	0.51	0.02
Shree Cement Ltd	0.51	0.02
Loktak HEP	0.50	0.02
Kopili HEP	0.49	0.02
Doyang HEP	0.47	0.02

NTPC Kawas Gas Plant	0.46	0.02
Transition Sustainable Energy Services One Private Limited	0.40	0.02
IRCON RENEWABLE POWER LIMITED_PAVAGADA	0.40	0.02
GMR Kamalanga Energy Ltd.	0.39	0.02
Sainj Hydro Power	0.38	0.02
NTPC Jhanor-Gandhar Gas Power plant	0.35	0.01
Parbati 3	0.35	0.01
Sorang HEP	0.34	0.01
NLCTSI EXPANSION 2	0.33	0.01
Sewa 2 Hydro Power	0.31	0.01
AD hydro power	0.30	0.01
TEHRIPSP	0.30	0.01
Chuzachen	0.30	0.01
Jorethang Loop Hydro Electric Project	0.29	0.01
RAP-C	0.27	0.01
Lanco Budhil	0.23	0.01
Gandhar Solar	0.21	0.01
Rongnichu Hydro Electric Project	0.21	0.01
Kopili-2 HEP	0.15	0.01
NTPC RENEWABLE ENERGY LIMITED	0.12	0.01
Unchahar Solar	0.11	0.005
Singrauli Solar	0.11	0.005
Talcher Solar	0.10	0.004
Serentica Renewables India 1 Private Limited- Koppal (Infir)	0.10	0.004
NTPC Kawas Solar	0.07	0.003
ReNew Wind Energy (AP2) Private Limited	0.04	0.001
NFL	0.03	0.001
Powergrid HVDC	0.02	0.001
Dadri Solar	0.02	0.001
Power grid HVDC	0.004	0.0002
Total	2409.60	100.00
Volume Exported by top 5 Regional Entities	560.80	23.27

Source: NLDC

Table-35: VOLUME OF ELECTRICITY OVER DRAWAL/ UNDER INJECTION (IMPORTED) UNDER DSM, DECEMBER 2024

Name of the Entity	Volume of Over drawal/ Under Injection (MU)	% of Volume
Maharashtra	119.15	4.81
Tamil Nadu	85.69	3.46
Rajasthan	79.66	3.21
Uttar Pradesh	75.62	3.05
Odisha	63.07	2.54
Telangana	62.72	2.53
West Bengal	61.65	2.49
Karnataka	61.33	2.47
Gujarat	52.12	2.10
Bihar	50.97	2.06
Andhra Pradesh	40.73	1.64
Kerala	40.03	1.62
JHARKHAND Beneficiary	32.99	1.33
Madhya Pradesh	32.49	1.31
Jammu & Kashmir	28.25	1.14
Haryana	25.85	1.04
ARCELOR MITTAL NIPPON STEEL INDIA LTD. Beneficiary	25.29	1.02
Adani Wind ENergy Kutchh One Limited	24.98	1.01
Vallur Thermal Power Station	24.42	0.99
Chhattisgarh	23.08	0.93
Uttarakhand	22.80	0.92
Punjab	22.56	0.91
Spring, Pugalur	21.89	0.88
JSW Renew Energy Limited Savalaperi infirm	21.15	0.85
INOX GREEN ENERGY SERVICES LIMITED	20.41	0.82
DVC Beneficiary	20.04	0.81
SINGRAULI TPS	18.89	0.76
AYANA RENEWABLE POWER SIX PRIVATE LIMITED	18.75	0.76
Adani Solar Energy Jaisalmer One Private Limited WIND	18.63	0.75
Himachal Pradesh	17.27	0.70
ReNew Surya Roshni Pvt Ltd	17.17	0.69
Tuticorin_JSWRenew_W_Infirm	16.95	0.68
NTPC Sipat Thermal Power Station Stage-1	16.87	0.68
TPCL Mundra Thermal Power Station (formerly CGPL)	16.52	0.67
Adani Wind Energy MP One Private Limited	15.87	0.64
HIRIYUR_OSTROKANNADA	15.46	0.62
Rihand Stage 1	15.19	0.61
Ramagundam	15.15	0.61
Mytrah, Tuticorin	14.91	0.60
JSW Energy Utkal Ltd	14.13	0.57
Sitac Kabini Renewables Pvt. Ltd.	14.07	0.57
Girel, Tuticorin	14.05	0.57
Assam	14.03	0.57
OSTRO Energy Private Limited	14.03	0.57
Adani Wind Energy Kutchh Four Ltd, Nakhatrana and Dedhiya	13.98	0.56
TANDA STAGE #2	13.75	0.55
NEW NEYVELI THERMAL POWER PALNT	13.60	0.55
Telangana super thermal power plant	13.42	0.54
Semcorp Energy India Limited_Project-1(SGPL)	13.27	0.54
Talcher stage 2	13.15	0.53
NTPC Rihand stage 2	13.11	0.53
Alfanar Energy Private Limited	12.85	0.52
Orange, Tuticorin	12.84	0.52
Betam, Tuticorin	12.81	0.52
Rihand Stage 3	12.67	0.51
Kahalgaon stage 1	12.45	0.50
Kahalgaon stage 2	12.36	0.50
BARH I	12.16	0.49
NTPC Farakka	11.95	0.48
Chandigarh	11.77	0.48
NTPC Gadarwara Super Thermal Power Plant Stage-I	11.12	0.45
Green Infra Wind Energy Limited SECI-II Vadva	10.92	0.44

IGSTPS JHAJJAR	10.85	0.44
Green Infra Wind Energy Limited SECI-III Vadva	10.49	0.42
ReNew Surya Ojas Private Limited koppal	10.37	0.42
Renew Power Limited SECI-II	10.08	0.41
Apraava Energy Private Limited (AEPL)	9.91	0.40
Sipat Stage 2	9.69	0.39
NTPC Khargone Super Thermal Power Plant	9.68	0.39
Arunachal Pradesh	9.31	0.38
BARH	9.19	0.37
NVVN Bhutan	8.63	0.35
JSW RENEW ENERGY TWO LIMITED (KARUR)	8.46	0.34
Simhardi Stage-2	8.40	0.34
NTPC Solapur Thermal Power Station Stage-1	8.33	0.34
KHURJA_STPP	8.24	0.33
Goa	7.78	0.31
Avikiran Solar India Private Ltd	7.72	0.31
NTPC Mauda Super Thermal Power Station Stage 2	7.66	0.31
RAP-C	7.57	0.31
Netra Wind Private Limited	7.53	0.30
NTPC Vindhyachal Super Thermal Power Station Stage I	7.48	0.30
NTPC Mauda Super Thermal Power Station	7.43	0.30
Nepal	7.40	0.30
COASTAL ENERGEN PVT LTD	7.33	0.30
NLCII Stage 2	7.17	0.29
NABINAGAR STPP (NPGC)	7.16	0.29
DADRI TPS#2	7.04	0.28
ADANI HYBRID WIND ENERGY JAILSALMER ONE LTD	7.03	0.28
Talcher stage 1	6.94	0.28
Korba Super Thermal Power Station Stage I&II	6.93	0.28
Srijan Energy	6.83	0.28
Ayana Renewable Power Three Private Limited	6.72	0.27
Moser Baer Power (MB Power) MP Limited	6.59	0.27
Sasan Ultra Mega Power Project	6.53	0.26
PVG_Tata Power Renewable Energy Limited	6.52	0.26
Dehar Hydro	6.22	0.25
Adani Solar Energy Jaisalmer Four Private Limited SOLAR	6.21	0.25
NTPC_KUDGI	6.00	0.24
Azure Power Forty Three Private Limited	5.83	0.24
NLCII Stage 1	5.82	0.24
Delhi	5.81	0.23
Dadar & Nagar Haveli, Daman & Diu	5.73	0.23
AM Green Energy Private Limited Wind	5.58	0.23
NTPC Vindhyachal Super Thermal Power Station Stage 2	5.57	0.22
ADANI HYBRID ENERGY JAILSALMER THREE LTD (Wind ONLY)	5.54	0.22
ACME DHAULPUR POWERTECH PRIVATE LIMITED	5.54	0.22
BALCO_CTU	5.52	0.22
Adani Green Energy Ltd	5.31	0.21
Kolayat Solar Power Plant	5.30	0.21
NTPC North Karanpura STPS	5.30	0.21
ADANI HYBRID ENERGY JAILSALMER TWO LTD wind	5.28	0.21
UNCHAAR 4	5.22	0.21
DADRI TPS#1	5.21	0.21
VENA ENERGY VIDYUTH PRIVATE LIMITED_INFIRM	5.21	0.21
ACME RAISAR SOLAR ENERGY PRIVATE LIMITED	5.18	0.21
Bongaigaon TPP(NTPC)	5.02	0.20
NPCIL Kakrapar Atomic Power Plant	4.96	0.20
NLCTSI EXPANSION 2	4.90	0.20
Jindal Power Ltd.	4.87	0.20
BRBCL_NABINAGAR	4.86	0.20
Ayana Renewable Power One Private Limited	4.76	0.19
Ayana, NPKUNTA	4.70	0.19
NTPC Vindhyachal Super Thermal Power Station Stage 4	4.63	0.19
NEPAL_NVVN	4.57	0.18
Ramagundam stage 3	4.49	0.18
NTPC Vindhyachal Super Thermal Power Station Stage 3	4.41	0.18
ADYAH SOLAR ENERGY PRIVATE LIMITED	4.32	0.17

Ananthapuramu (Sprng) Ultra Mega Solar Park	4.32	0.17
Darlipali Super Thermal Power Station	4.25	0.17
Jindal Power Ltd. Stage-2	4.19	0.17
Simhardi Stage-1	4.19	0.17
Torrent Solargen Ltd (Torrent Power Ltd)	4.11	0.17
ADANI GREEN ENERGY TWENTY FIVE LIMITED	3.98	0.16
NTPC ETTAYAPURAM SOLAR PLANT	3.97	0.16
ADANI HYBRID ENERGY JAILSALMER THREE LTD (SOLAR ONLY)	3.94	0.16
UNCHAHAR 2	3.84	0.15
Adani Solar Energy Jaisalmer One Private Limited	3.75	0.15
Jhabua	3.73	0.15
Masaya Solar Energy Private Limited	3.70	0.15
Fortum Solar	3.70	0.15
GMR Warora Energy Ltd.	3.65	0.15
ACME PHALODI SOLAR ENERGY PRIVATE LIMITED	3.62	0.15
Adani NPKUNTA_SOLAR	3.53	0.14
Adani Power Limited - Raipur TPP	3.53	0.14
ADANI HYBRID ENERGY JAILSALMER TWO LTD (SOLAR ONLY)	3.52	0.14
ADANI SOLAR ENERGY KA NINE PRIVATE LIMITED	3.48	0.14
NTPC Lara	3.39	0.14
KSK mahanadi	3.35	0.14
BEEMPOW ENERGY PRIVATE LIMITED	3.31	0.13
TATA POWER RENEWABLE ENERGY LIMITED	3.19	0.13
NLC Tamli Nadu Power Ltd	3.18	0.13
NTPC Vindhyachal Super Thermal Power Station Stage 5	3.16	0.13
MAHAN ENERGEN LIMITED	3.15	0.13
RENEW SURYA RAVI	3.15	0.13
ACB (India) Ltd.	3.14	0.13
Shree Cement Ltd	3.12	0.13
Nidan NTPC	3.09	0.12
Avaada Sunce Energy Private Limited	3.03	0.12
Azure Power Forty One Private Limited	3.01	0.12
ACME DEOGHAR SOLAR POWER PRIVATE LIMITED	2.96	0.12
NSPCL	2.95	0.12
Koldam Hydro Power	2.92	0.12
GRT Jewellers (India) Private Limited_GRTJIPL	2.92	0.12
DP Power	2.90	0.12
Clean Solar Power (bhadla) Pvt. Ltd	2.90	0.12
SIKKIM Beneficiary	2.90	0.12
Goa	2.89	0.12
NLC Expansion	2.88	0.12
ABC RENEWABLE ENERGY PRIVATE LIMITED	2.87	0.12
Rapp 7&8	2.81	0.11
SIMHAPURI(SEPL)	2.79	0.11
ACME Heergarh Powertech Private Limited	2.78	0.11
Pondichery	2.74	0.11
Clean Solar Power (bhadla) Pvt. Ltd	2.73	0.11
Serentica Renewables India 1 Private Limited	2.72	0.11
Unchahar stage 3	2.71	0.11
Bangladesh	2.71	0.11
ADANI HYBRID ENERGY JAILSALMER ONE LTD (SOLAR ONLY)	2.68	0.11
NTPC, NPKunta	2.67	0.11
UNCHAHAR 1	2.64	0.11
Thar Surya 1 Private Limited	2.64	0.11
Avaada Sustainable RJProject Private Limited	2.64	0.11
PARAMPUJYA SOALR ENERGY PVT LTD	2.63	0.11
Nokhra Solar	2.57	0.10
Powerica	2.56	0.10
Avaada Sunrays Energy Private Limited	2.54	0.10
Meenakshi Energy Limited	2.52	0.10
ACME Chittorgarh Solar Energy Private Limited	2.48	0.10
Maithon Power Ltd.	2.48	0.10
ReNew Surya Roshni Pvt Ltd	2.46	0.10
Avaada Solar, Pavagada	2.45	0.10
RKM Power	2.45	0.10

Transition Sustainable Energy Services Pvt Ltd	2.44	0.10
Railways	2.41	0.10
TATA POWER GREEN Energy Limited	2.39	0.10
Adani Solar Energy Jaisalmer Two Private Limited	2.36	0.10
URI	2.36	0.10
Semcorp Energy India Limited Project-2(SGPL)	2.36	0.10
Tripura	2.35	0.09
Mahindra Renewables Pvt Ltd.	2.35	0.09
Adani Power Limited - Raigarh TPP	2.32	0.09
Avaada solarize	2.31	0.09
Renew Solar Power Private Limited Bikaner	2.31	0.09
TPSL Banderwala	2.30	0.09
Athena Jaipur Solar Power Pvt. Ltd.	2.24	0.09
Mejia Thermal Power station stage 2	2.18	0.09
ReNew Solar Urja Pvt Ltd	2.16	0.09
Farakka stage 3	2.16	0.09
ReNew Sun Bright Private Limited	2.14	0.09
Adani Solar Energy Jaisalmer Two Private Limited Solar	2.11	0.09
Tehri Hydro	2.07	0.08
DEVIKOT SOLAR	2.06	0.08
Altra Xergi Power Private Limited	2.04	0.08
Meghalaya	2.00	0.08
Adani Solar Energy Jaisalmer Two Private Limited, bhadla	1.99	0.08
URI Stage 2	1.97	0.08
Azure Power Pavagada	1.90	0.08
Transition Energy Services Private Limited	1.88	0.08
Adani Renewable (RJ) Ltd	1.88	0.08
Korba Super Thermal Power Station Stage III	1.86	0.07
Eden Renewable Cite Private Limited	1.84	0.07
SRI5PL_BKN2	1.82	0.07
RISING SUN ENENRGY PVT LIMITED	1.81	0.07
Avaada RJHN Private Limited	1.81	0.07
Jindal India Thermal Power Ltd.	1.79	0.07
Ranganadi HEP	1.78	0.07
Serentica Renewables India 4 Private Limited	1.74	0.07
Azure Power Maple Private Limited	1.71	0.07
RENEW SURYA PRATAP	1.70	0.07
NTPC RAMAGUNDAM FLOATING SOLAR PLANT	1.67	0.07
Fortum finsurya	1.66	0.07
ELECTRO SOLAIRE PVT. LTD.	1.64	0.07
ADANI RENEWABLE ENERGY HOLDING FOUR LIMITED	1.64	0.07
Mega Solis Renewables Private Limited	1.63	0.07
Adept Renewable Technologies Private Limited	1.58	0.06
AMPLUS Pavagada	1.57	0.06
Reliance Industries Limited Jamnagar	1.55	0.06
AVAADA SUNSHINE ENERGY PRIVATE LIMITED	1.54	0.06
Grian Energy Private Limited	1.54	0.06
Renew Surya Aayan Private Limited	1.53	0.06
Karacham Wangtoo	1.53	0.06
Adani Solar Energy Jaisalmer Two Private Limited (Project-2)	1.52	0.06
Renew Sun wave Pvt. Ltd. Fatehgarh2	1.52	0.06
Mega Suryaaurja Pvt Ltd	1.49	0.06
RENEW SOLAR ENERGY (JHARKHAND) PRIVATE LIMITED	1.49	0.06
TP Saurya	1.46	0.06
TATA, Npkunta	1.45	0.06
Chamera 2	1.44	0.06
Railways ER	1.43	0.06
Azure Solar	1.42	0.06
Adani Solar Energy Jaisalmer Five Private Limited	1.42	0.06
Adhunik Power & Natural Resources Ltd	1.38	0.06
AM Green Energy Private Limited Wind Infirm	1.38	0.06
OneVolt Energy Private Limited	1.36	0.05
Manipur	1.34	0.05
Arinsun Clean Energy Private Ltd	1.32	0.05
IRCON RENEWABLE POWER LIMITED_PAVAGADA	1.25	0.05
TEHRIPSP	1.24	0.05

NTPC Kawas Solar	1.24	0.05
SKS Power	1.24	0.05
NFL	1.22	0.05
Athena Hisar Solar Power Pvt. Ltd	1.21	0.05
Dhariwal Infrastructure	1.19	0.05
DGEN Mega Power Project	1.18	0.05
Azure Power Thirty Four pvt Limited	1.17	0.05
Athena Karnal Solar Power Pvt. Ltd	1.17	0.05
Renew Power pavagada	1.14	0.05
Transition Green Energy Private Limited	1.12	0.05
Athena Bhiwadi Solar Power Pvt. Ltd	1.12	0.05
SEMBCORP GREEN INFRA PRIVATE LIMITED (INFIRM)	1.11	0.04
INDIGRID SOLAR-I (AP) PRIVATE LIMITED	1.10	0.04
JUNIPER GREEN COSMIC PRIVATE LIMITED	1.09	0.04
TRN Energy	1.09	0.04
Mizoram	1.07	0.04
DIKCHU	1.05	0.04
Ratnagiri Gas and Power PVT Limited	1.02	0.04
ADANI RENEWABLE ENERGY HOLDING FOUR LIMITED	1.01	0.04
TATA POWER RENEWABLE ENERGY LTD, Radhanesda	0.98	0.04
INDIGRID SOLAR-II (AP) PRIVATE LIMITED	0.98	0.04
Kameng HEP	0.97	0.04
Azure NPKUNTA	0.94	0.04
PVG_AMPLUS_TUMKUR	0.91	0.04
Nagaland	0.91	0.04
DULHASTI Hydro power	0.89	0.04
KREDL, Pavagada	0.89	0.04
AMP Energy Green Six Private Limited	0.89	0.04
PVG_AMPLUS_PAVAGADA	0.87	0.04
Chamera 3	0.87	0.04
NTPC RENEWABLE ENERGY LIMITED	0.86	0.03
Renew Surya Vihaan Private Limited	0.85	0.03
Assam Gas Based Power Plant(Kathalguri)	0.84	0.03
Nepal	0.80	0.03
Sherisha Rooftop Solar SPV Four Private Limited	0.80	0.03
AMP Energy Green Five Private Limited	0.80	0.03
RAP-B	0.77	0.03
Yarrow, Pavagada	0.76	0.03
NTPC ANTA SOLAR PV STATION	0.72	0.03
SJVN	0.69	0.03
Koteshwar hps	0.62	0.02
SALAL Hydro	0.59	0.02
GUJARAT INDUSTRIES POWER COMPANY LTD	0.59	0.02
NTPC Jhanor-Gandhar Gas Power plant	0.57	0.02
NTPC Kawas Gas Plant	0.57	0.02
VEDANTA LTD	0.56	0.02
NAPP	0.55	0.02
Sewa 2 Hydro Power	0.54	0.02
Transition Sustainable Energy Services One Private Limited	0.52	0.02
JPNIGRIE (JNSTPP)	0.51	0.02
ReNew Solar Power Private Limited	0.50	0.02
Kopili HEP	0.49	0.02
Lanco Kondapalli Power Ltd	0.49	0.02
Agartala Gas Turbine Power Plant	0.49	0.02
Kishanganga HEP	0.48	0.02
LANCO AMARKANTAK	0.48	0.02
RANGIT	0.48	0.02
DHAULIGANGA HEP	0.47	0.02
Gujarat State Electricity Corporation Limited phase-2	0.40	0.02
Adani Solar Energy Four Private Limited	0.35	0.01
Sainj Hydro Power	0.35	0.01
ILFS	0.33	0.01
Jindal Steel & power Ltd. (Dangamahua CPP)	0.33	0.01
Gujarat State Electricity Corporation Limited, Radhanesda	0.33	0.01
Gandhar Solar	0.32	0.01
Simhadari Floating Solar	0.32	0.01

Singoli Bhatwari HEP	0.32	0.01
Chamera 1	0.29	0.01
NAPTHA JHAKRI HEP	0.27	0.01
BALCO	0.26	0.01
BHAKRA	0.26	0.01
Singrauli Solar	0.24	0.01
Pong Hydro Power	0.22	0.01
IRCON RENEWABLE POWER LIMITED_PAVAGADA	0.21	0.01
Lanco Budhil	0.20	0.01
Talcher Solar	0.19	0.01
Doyang HEP	0.19	0.01
Tashiding Hydro Power	0.17	0.01
Unchahar Solar	0.16	0.01
Auraiya Solar	0.15	0.01
GMR Kamalanga Energy Ltd.	0.15	0.01
Kopili-2 HEP	0.14	0.01
Chuzachen	0.14	0.01
TANAKPUR	0.14	0.01
Rongnichu Hydro Electric Project	0.14	0.01
Dadri Solar	0.13	0.01
Rampur Hydro	0.12	0.005
Serentica Renewables India 1 Private Limited- Koppal (Infir)	0.12	0.005
AD hydro power	0.10	0.004
Bairasuil Hydro Power	0.10	0.004
Power grid HVDC	0.08	0.003
Pare_HEP	0.07	0.003
Jorethang Loop Hydro Electric Project	0.05	0.002
Powergrid HVDC	0.05	0.002
Loktak HEP	0.04	0.002
Baba Atomic research Centre	0.03	0.001
Sorang HEP	0.03	0.001
Parbati 3	0.02	0.001
PALATANA	0.01	0.0003
ReNew Wind Energy (AP2) Private Limited	0.002	0.0001
SINGRAULI HYDRO	0.0004	0.00002
TOTAL	2478.15	100.00
Volume Imported by top 5 Regional Entities	423.18	17.08

Source: NLDC

Table-36: VOLUME AND PRICE OF RENEWABLE ENERGY CERTIFICATES (RECs) TRANSACTED THROUGH POWER EXCHANGES AND THROUGH TRADERS (BILATERAL), DECEMBER 2024

Sr. No	Details of REC Transactions	Through Power Exchange			Bilateral through Traders
		IEX	PXIL	HPX	
1	Volume of Buy Bid	5472313	3236080	825285	-
2	Volume of Sell Bid	3980280	3131073	2020000	-
3	Ratio of Buy Bid to Sell Bid Volume	1.37	1.03	0.41	-
4	Traded Volume (MWh)	1662203	885119	20000	100533
5	Weighted Average Price (₹/MWh)	282	281	290	265

Source: Power Exchanges & Grid-India REC Report

Note: 1 REC = 1 MWh

Table-37(a): VOLUME AND PRICE OF CROSS BORDER TRADE THROUGH DAY AHEAD MARKET AT IEX, DECEMBER 2024

Sr. No.	Neighbouring Country	Volume (MU)			Weighted Average Price (₹/kWh)	
		Sale	Purchase	Net*	Sale	Purchase
1	Nepal	3.00	43.18	40.19	2.41	3.85
2	Bhutan	0.00	214.55	214.55	-	2.68
	Total	3.00	257.73	254.74	-	-

Source: IEX

* Net indicates difference of volume purchased and sold by the respective neighbouring country

Note: No Cross Border transactions were recorded in DAM at PXIL and HPX

Table-37(b): VOLUME AND PRICE OF CROSS BORDER TRADE THROUGH REAL TIME MARKET AT IEX, DECEMBER 2024

Sr. No.	Neighbouring Country	Volume (MU)			Weighted Average Price (₹/kWh)	
		Sale	Purchase	Net*	Sale	Purchase
1	Nepal	6.27	29.52	23.26	2.34	3.31
2	Bhutan	0.00	8.29	8.29	-	3.26
	Total	6.27	37.82	31.55	-	-

Source: IEX

* Net indicates difference of volume purchased and sold by the respective neighbouring country

Note: No Cross Border transactions were recorded in RTM at PXIL and HPX



Economics Division
Central Electricity Regulatory Commission
6th, 7th & 8th Floors, Tower B, World Trade Centre,
Nauroji Nagar, New Delhi- 110029